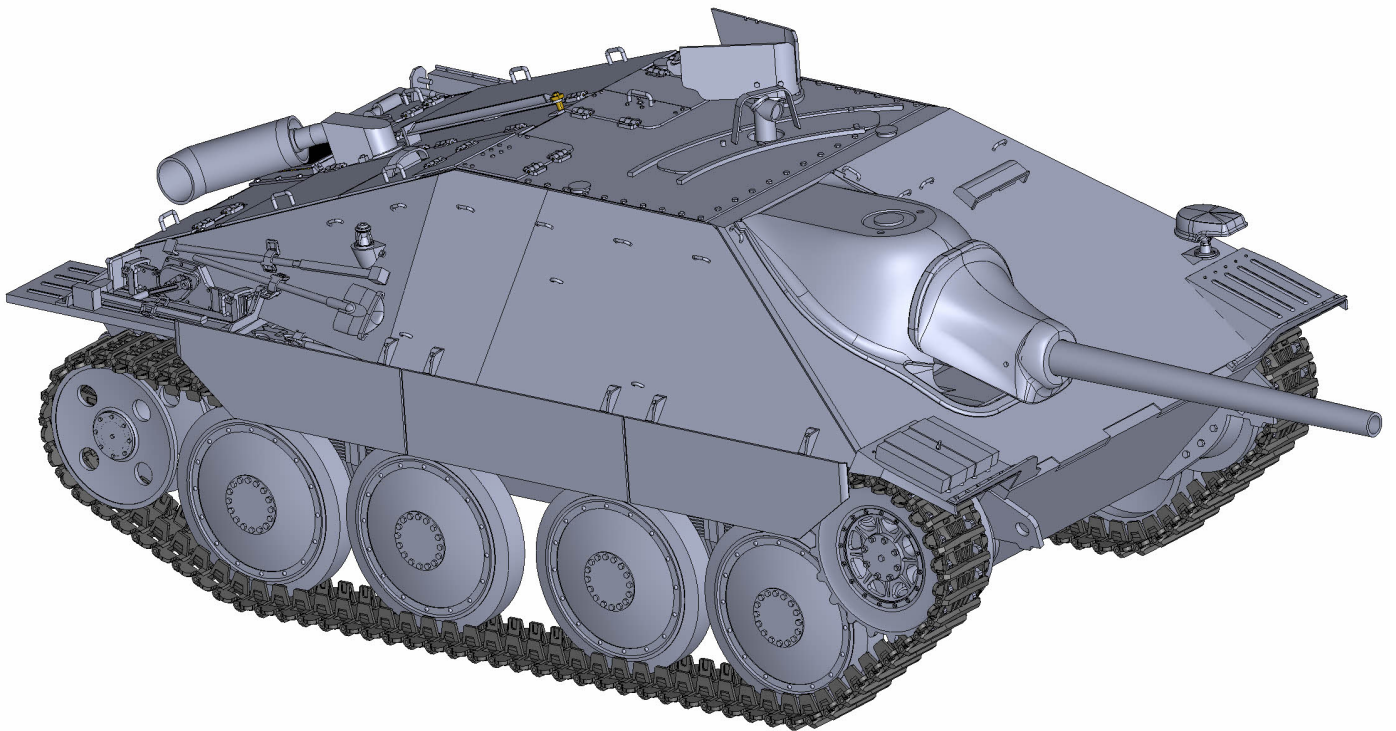


# Jagdpanzer 38 (t) Hetzer

## Printing Guide



1/16 scale RC model by  **WARPRINTS**

# Jagdpanzer 38(t)

## Printing guide

**Calibrate the printer as best as possible, it is necessary to get the most accurate dimensions.**

For calibration tips, visit our forum:

<https://forum.warprints.xyz>

For surface treatment, we recommend XTC-3D diluted with technical alcohol (2:1) in favor of XTC-3D

We do not recommend printing using PLA due to low melting point nor HD PLA for dimensional instability.

If possible, try to print as many parts from ASA or ABS as possible.

Advantages include high mechanical and thermal resistance and the possibility of solid gluing with acetone.

The kit is divided into chapters. Assemblies from individual chapters can be uninstalled from the model at any time in case of need of service or maintenance.

**Never bond the complete subassemblies 01 to 04!!!**

The tables contain a list of all necessary parts and basic printing information.

For more information on printing individual parts, continue below. If you have additional questions about printing, please contact us in our forum.

“Nozzle” indicates the maximum nozzle diameter for printing the part. Parts with a diameter of 0.4mm can also be printed with a 0.3mm nozzle.

The use of a 0.4mm nozzle for printing parts designed for a 0.3mm nozzle can result in omission of details or omission of important elements.

PART	amount	support	nozzle
01-01	1x	YES	0,3mm
01-02	1x	NO	0,4mm
01-03	1x	NO	0,4mm
01-04	1x	NO	0,3mm
01-05	1x	NO	0,3mm
01-06	1x	NO	0,3mm
01-07	1x	NO	0,3mm
01-08	1x	NO	0,3mm
01-09	1x	NO	0,3mm
01-10	1x	NO	0,3mm
01-11	1x	NO	0,3mm
01-12	1x	NO	0,3mm
01-13	1x	NO	0,3mm
01-14	1x	NO	0,3mm
01-15	1x	NO	0,3mm
01-16	1x	NO	0,3mm
01-17	1x	NO	0,4mm
01-18	1x	NO	0,3mm
01-19	1x	NO	0,3mm
01-20A	1x	NO	0,3mm
01-20B	1x	NO	0,3mm
01-21	1x	NO	0,3mm
01-22	3x	NO	0,3mm
01-23	1x	NO	0,3mm
01-24	1x	NO	0,3mm
01-25	1x	NO	0,3mm
01-26A	1x	NO	0,3mm
01-26B	1x	NO	0,3mm
01-26C	1x	NO	0,3mm

PART	amount	support	nozzle
01-26D	2x	NO	0,3mm
01-27A	1x	NO	0,3mm
01-27B	1x	NO	0,3mm
01-28A	1x	NO	0,3mm
01-28B	1x	NO	0,3mm
01-28C	1x	NO	0,3mm
01-29	2x	NO	0,3mm
01-30	1x	NO	0,3mm
01-31	2x	NO	0,3mm
01-32	2x	YES	0,3mm
01-33	2x	NO	0,3mm
01-34	2x	NO	0,3mm
01-35	2x	NO	0,4mm
01-36	2x	YES	0,4mm
01-37	2x	NO	0,3mm
01-38	2x	NO	0,3mm
01-39	1x	NO	0,3mm
01-40	1x	NO	0,4mm
01-41	8x	NO	0,4mm
01-42	8x	NO	0,3mm
01-43A	4x	NO	0,3mm
01-43B	4x	NO	0,3mm
01-44A	8x	YES	0,3mm
01-44B	8x	NO	0,3mm
01-45A	2x	NO	0,4mm
01-45B	2x	NO	0,3mm
01-46	2x	NO	0,3mm
01-47	2x	NO	0,3mm
01-48	8x	NO	0,3mm

# Jagdpanzer 38(t)

## Printing guide

There are two cannons with different mechanics to choose from.  
For more information, see page 63 of the Assembly Guide.

For this reason, Chapter 02 is divided into two alternative configurations - 02A and 02B.  
Choose the cannon that suits you and print the parts needed for that cannon.

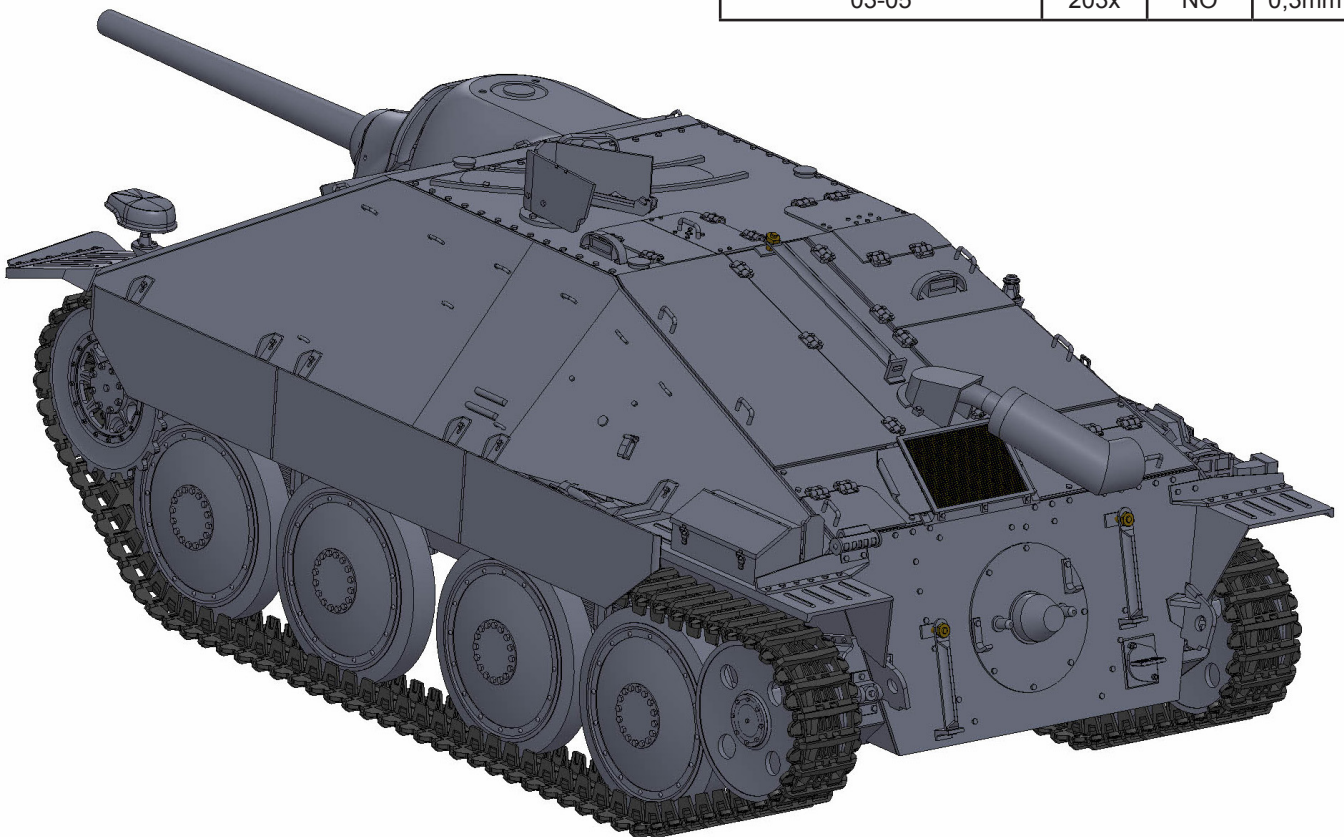
You can print the other cannon at any time and easily swap it.

PART	amount	support	nozzle
02A-01	1x	NO	0,3mm
02A-02	1x	NO	0,3mm
02A-03	1x	NO	0,3mm
02A-04	1x	NO	0,3mm
02A-05	1x	YES	0,3mm
02A-06	2x	NO	0,3mm
02A-07	1x	NO	0,3mm
02A-08	1x	NO	0,3mm
02A-09	1x	NO	0,3mm
02A-10	1x	NO	0,3mm

PART	amount	support	nozzle
JIG-01	1x	NO	0,4mm
JIG-02	1x	NO	0,4mm

PART	amount	support	nozzle
02B-01	1x	NO	0,3mm
02B-02	1x	NO	0,3mm
02B-03	1x	NO	0,3mm
02B-04	1x	YES	0,3mm
02B-05	1x	NO	0,3mm
02B-06	1x	NO	0,3mm
02B-07	1x	NO	0,3mm
02B-08	1x	NO	0,3mm

PART	amount	support	nozzle
03-01	2x	NO	0,4mm
03-02	2x	NO	0,4mm
03-03	1x	YES	0,4mm
03-04	1x	NO	0,4mm
03-05	203x	NO	0,3mm

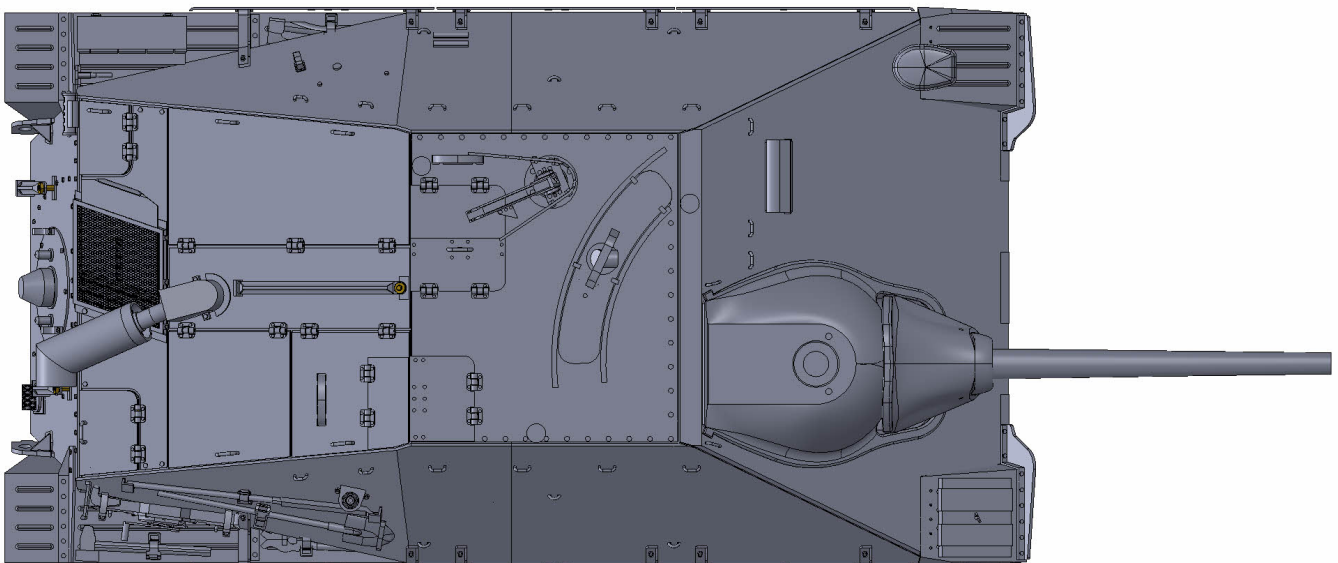


# Jagdpanzer 38(t)

## Printing guide

PART	amount	support	nozzle
04-01	1x	YES	0,3mm
04-02	1x	NO	0,3mm
04-03	1x	YES	0,3mm
04-04	1x	NO	0,3mm
04-05	1x	NO	0,3mm
04-06	1x	NO	0,3mm
04-07	1x	NO	0,3mm
04-08	1x	NO	0,3mm
04-09	1x	NO	0,3mm
04-10	1x	NO	0,3mm
04-11	1x	NO	0,3mm
04-12	1x	NO	0,3mm
04-13	1x	NO	0,3mm
04-14	1x	NO	0,3mm
04-15	2x	NO	0,3mm
04-16A	1x	NO	0,3mm
04-16B	1x	NO	0,3mm
04-16C	1x	NO	0,3mm
04-17A	1x	NO	0,3mm
04-17B	1x	NO	0,3mm
04-17C	1x	YES	0,3mm
04-18	1x	NO	0,3mm
04-19	1x	NO	0,3mm
04-20	1x	NO	0,3mm
04-21	1x	NO	0,3mm

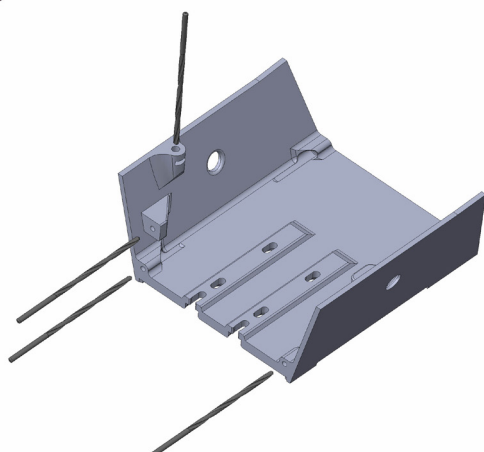
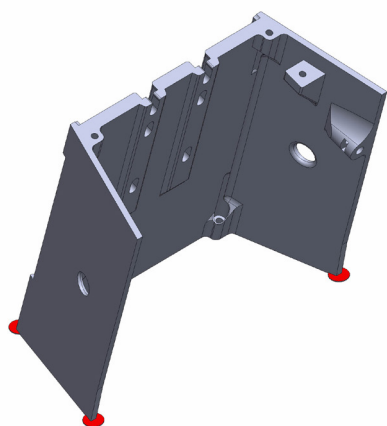
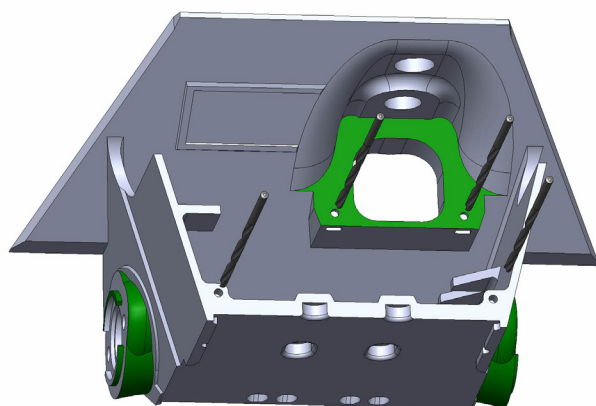
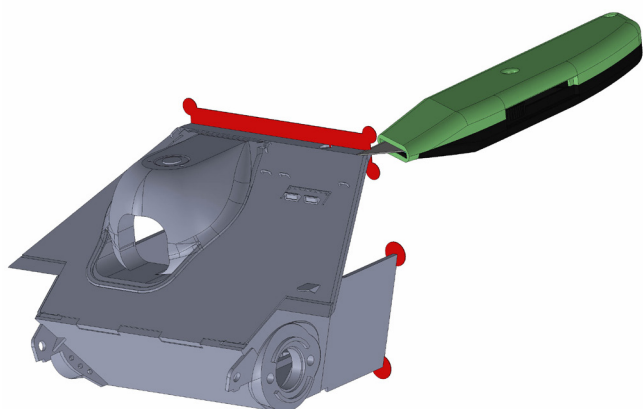
PART	amount	support	nozzle
04-22	2x	NO	0,3mm
04-23	1x	NO	0,3mm
04-24	1x	NO	0,3mm
04-25	1x	NO	0,3mm
04-26	1x	NO	0,3mm
04-27	1x	NO	0,3mm
04-28	1x	YES	0,3mm
04-29	1x	YES	0,3mm
04-30	1x	NO	0,3mm
04-31	1x	NO	0,3mm
04-32	1x	NO	0,3mm
04-33	1x	NO	0,3mm
04-34	1x	NO	0,3mm
04-35	1x	NO	0,3mm
04-36	1x	NO	0,3mm
04-37	1x	NO	0,3mm
04-38	1x	NO	0,3mm
04-39	1x	NO	0,3mm
04-40	1x	NO	0,3mm
04-41	5x	NO	0,3mm
04-42	5x	NO	0,3mm
04-43A	1x	NO	0,3mm
04-43B	1x	NO	0,3mm
04-43C	1x	NO	0,3mm
04-43D	1x	NO	0,3mm





# Jagdpanzer 38(t)

## Printing guide



<b>PART Nr.:</b>	<b>01-01</b>
<b>MATERIAL:</b>	PET(G), CPE
<b>LAYER:</b>	0,1 - 0,15mm
<b>AMOUNT:</b>	1x
<b>SUPPORT:</b>	YES
<b>NOZZLE:</b>	0,25 - 0,3mm

**NOTES:**

**Use supports only for areas marked with green color !!!**

Drill the screw holes with a 2-2.5mm drill bit. Cut off the auxiliary areas marked in red.

If you do not need the auxiliary areas, you can print an alternate part

**01-01\_NO\_BASE.**

If you do not want to print handles, you can use an alternative part

**01-01\_NO\_HANDLES.**

If you are using part **01-01\_HI-SPEED**, cut off the large internal auxiliary surfaces.

After cutting, the part must look like the part in the second picture.

<b>PART Nr.:</b>	<b>01-02</b>
<b>MATERIAL:</b>	PET(G), CPE
<b>LAYER:</b>	0,1 - 0,25mm
<b>AMOUNT:</b>	1x
<b>SUPPORT:</b>	NO
<b>NOZZLE:</b>	0,25 - 0,4mm

**NOTES:**

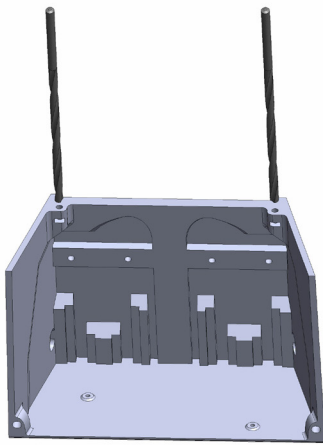
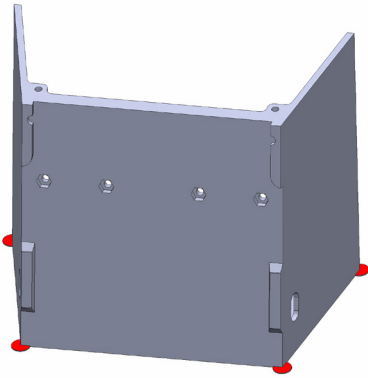
Drill the screw holes with a 2-2.5mm drill bit.

Cut off the auxiliary areas marked in red.

If you do not need the auxiliary areas, you can print an alternate part **01-02\_NO\_BASE.**

# Jagdpanzer 38(t)

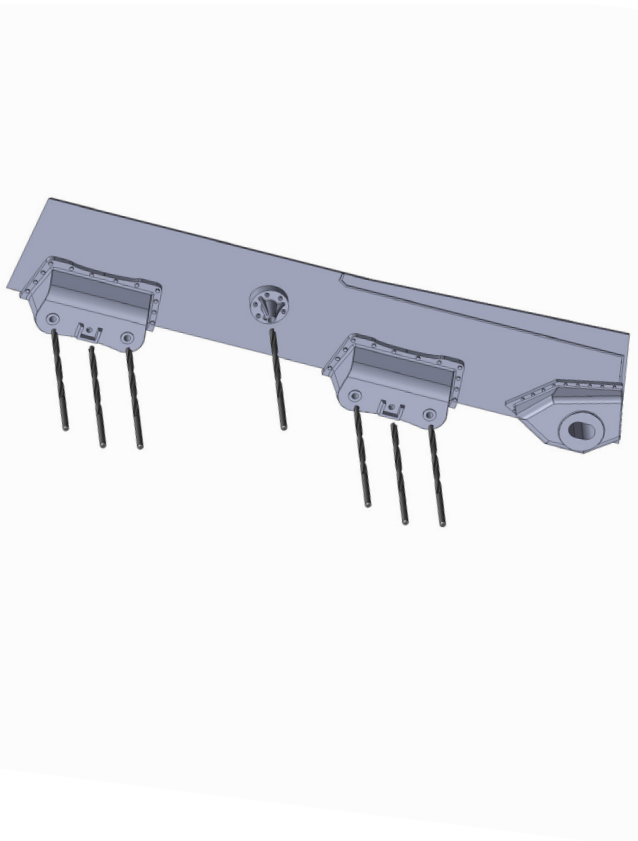
## Printing guide



<b>PART Nr.:</b>	<b>01-03</b>
<b>MATERIAL:</b>	PET(G), CPE
<b>LAYER:</b>	0,1 - 0,25mm
<b>AMOUNT:</b>	1x
<b>SUPPORT:</b>	NO
<b>NOZZLE:</b>	0,25 - 0,4mm

**NOTES:**

Drill the screw holes with a 2-2.5mm drill bit.  
 Cut off the auxiliary areas marked in red.  
 If you do not need the auxiliary areas, you can print an alternate part **01-03\_NO\_BASE**.



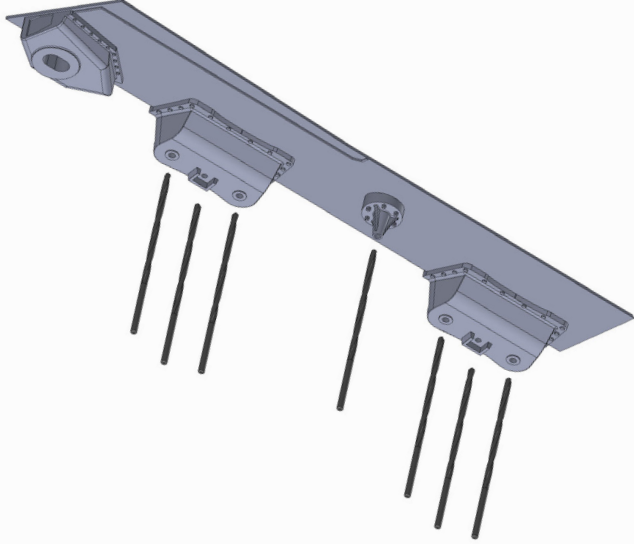
<b>PART Nr.:</b>	<b>01-04</b>
<b>MATERIAL:</b>	PET(G), CPE, ASA, ABS
<b>LAYER:</b>	0,1 - 0,15mm
<b>AMOUNT:</b>	1x
<b>SUPPORT:</b>	NO
<b>NOZZLE:</b>	0,25 - 0,3mm

**NOTES:**

Drill the screw holes with a 2 mm drill bit.

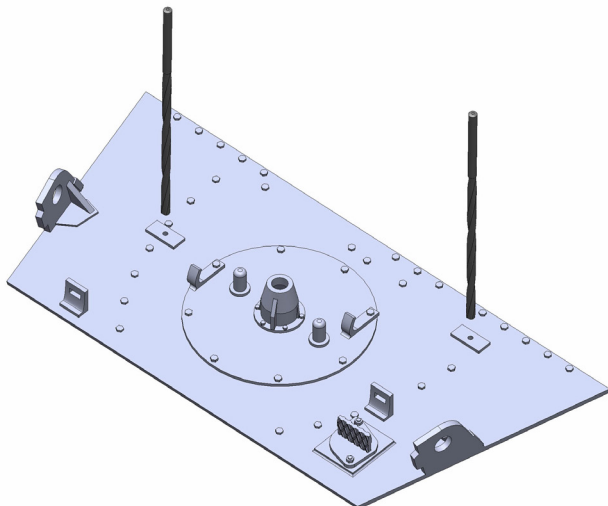
# Jagdpanzer 38(t)

## Printing guide



<b>PART Nr.:</b>	<b>01-05</b>
<b>MATERIAL:</b>	PET(G), CPE, ASA, ABS
<b>LAYER:</b>	0,1 - 0,15mm
<b>AMOUNT:</b>	1x
<b>SUPPORT:</b>	NO
<b>NOZZLE:</b>	0,25 - 0,3mm

**NOTES:** Prevrtajte otvory pre skrutky vrtákom 2-2,5mm.

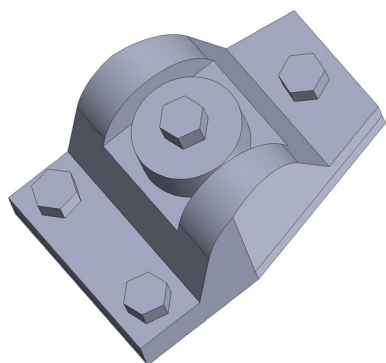


<b>PART Nr.:</b>	<b>01-06</b>
<b>MATERIAL:</b>	PET(G), CPE, ASA, ABS
<b>LAYER:</b>	0,1 - 0,15mm
<b>AMOUNT:</b>	1x
<b>SUPPORT:</b>	NO
<b>NOZZLE:</b>	0,25 - 0,3mm

**NOTES:** Drill the screw holes with a 1,6-2mm drill bit.

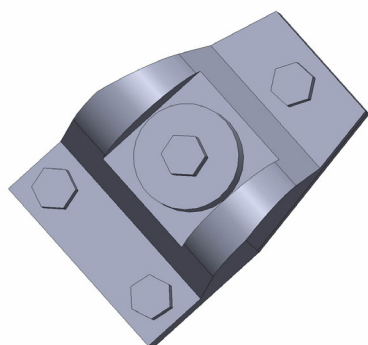
# Jagdpanzer 38(t)

## Printing guide



<b>PART Nr.:</b>	<b>01-07</b>
<b>MATERIAL:</b>	PET(G), CPE, ASA, ABS
<b>LAYER:</b>	0,1 - 0,15mm
<b>AMOUNT:</b>	1x
<b>SUPPORT:</b>	NO
<b>NOZZLE:</b>	0,25 - 0,3mm

NOTES:

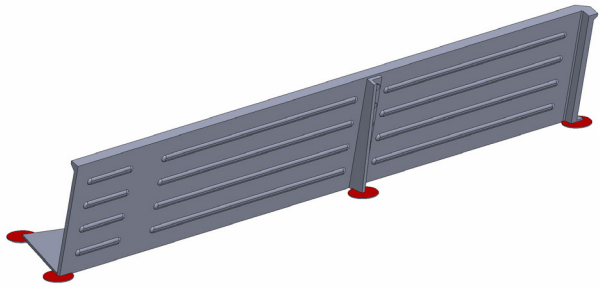


<b>PART Nr.:</b>	<b>01-08</b>
<b>MATERIAL:</b>	PET(G), CPE, ASA, ABS
<b>LAYER:</b>	0,1 - 0,15mm
<b>AMOUNT:</b>	1x
<b>SUPPORT:</b>	NO
<b>NOZZLE:</b>	0,25 - 0,3mm

NOTES:

# Jagdpanzer 38(t)

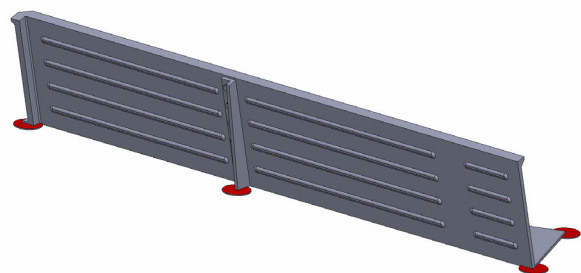
## Printing guide



<b>PART Nr.:</b>	<b>01-09</b>
<b>MATERIAL:</b>	PET(G), CPE, ASA, ABS
<b>LAYER:</b>	0,1 - 0,15mm
<b>AMOUNT:</b>	1x
<b>SUPPORT:</b>	NO
<b>NOZZLE:</b>	0,25 - 0,3mm

**NOTES:**

Cut off the auxiliary areas marked in red.  
If you do not need the auxiliary areas, you can print an alternate part **01-09\_NO\_BASE**.



<b>PART Nr.:</b>	<b>01-10</b>
<b>MATERIAL:</b>	PET(G), CPE, ASA, ABS
<b>LAYER:</b>	0,1 - 0,15mm
<b>AMOUNT:</b>	1x
<b>SUPPORT:</b>	NO
<b>NOZZLE:</b>	0,25 - 0,3mm

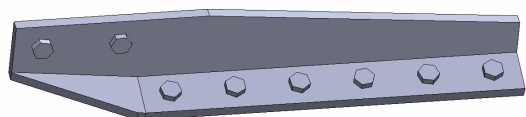
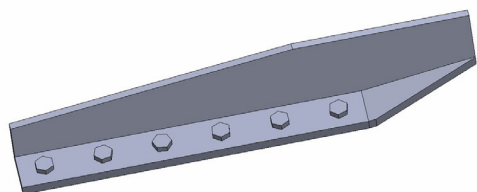
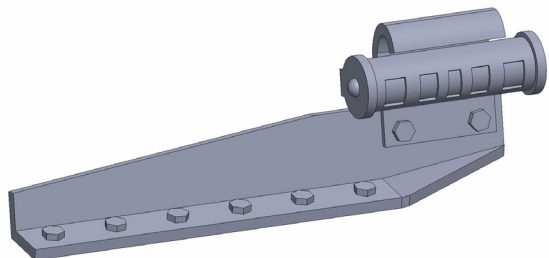
**NOTES:**

Cut off the auxiliary areas marked in red.  
If you do not need the auxiliary areas, you can print an alternate part **01-10\_NO\_BASE**.



# Jagdpanzer 38(t)

## Printing guide



<b>PART Nr.:</b>	<b>01-11</b>
<b>MATERIAL:</b>	PET(G), CPE, ASA, ABS
<b>LAYER:</b>	0,1 - 0,15mm
<b>AMOUNT:</b>	1x
<b>SUPPORT:</b>	NO
<b>NOZZLE:</b>	0,25 - 0,3mm

**NOTES:**

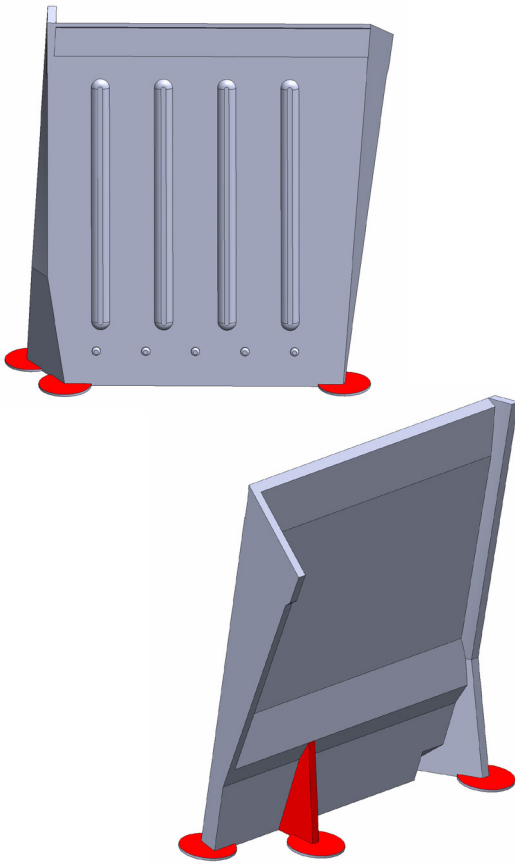
If you do not want wish use the printed tail light, or if you want to print the part separated in two, print the parts **01-11A\_alt** and **01-11B\_alt**.

<b>PART Nr.:</b>	<b>01-12</b>
<b>MATERIAL:</b>	PET(G), CPE, ASA, ABS
<b>LAYER:</b>	0,1 - 0,15mm
<b>AMOUNT:</b>	1x
<b>SUPPORT:</b>	NO
<b>NOZZLE:</b>	0,25 - 0,3mm

**NOTES:**

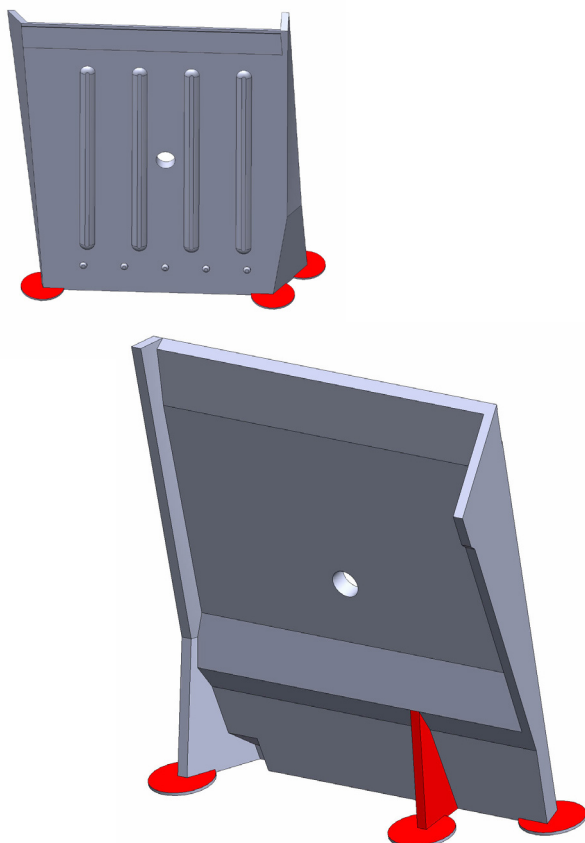
# Jagdpanzer 38(t)

## Printing guide



<b>PART Nr.:</b>	<b>01-13</b>
<b>MATERIAL:</b>	PET(G), CPE, ASA, ABS
<b>LAYER:</b>	0,1 - 0,15mm
<b>AMOUNT:</b>	1x
<b>SUPPORT:</b>	NO
<b>NOZZLE:</b>	0,25 - 0,3mm

**NOTES:**  
Cut off the auxiliary areas marked in red.  
If you do not need the auxiliary areas, you can print an alternate part **01-13\_NO\_BASE**.

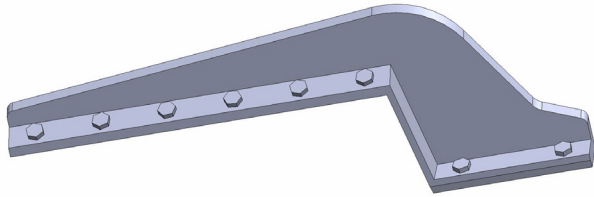


<b>PART Nr.:</b>	<b>01-14</b>
<b>MATERIAL:</b>	PET(G), CPE, ASA, ABS
<b>LAYER:</b>	0,1 - 0,15mm
<b>AMOUNT:</b>	1x
<b>SUPPORT:</b>	NO
<b>NOZZLE:</b>	0,25 - 0,3mm

**NOTES:**  
Cut off the auxiliary areas marked in red.  
If you do not need the auxiliary areas, you can print an alternate part **01-14\_NO\_BASE**.

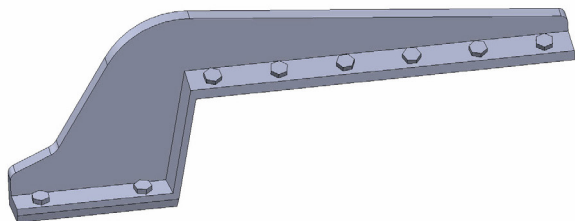
# Jagdpanzer 38(t)

## Printing guide



<b>PART Nr.:</b>	<b>01-15</b>
<b>MATERIAL:</b>	PET(G), CPE, ASA, ABS
<b>LAYER:</b>	0,1 - 0,15mm
<b>AMOUNT:</b>	1x
<b>SUPPORT:</b>	NO
<b>NOZZLE:</b>	0,25 - 0,3mm

NOTES:

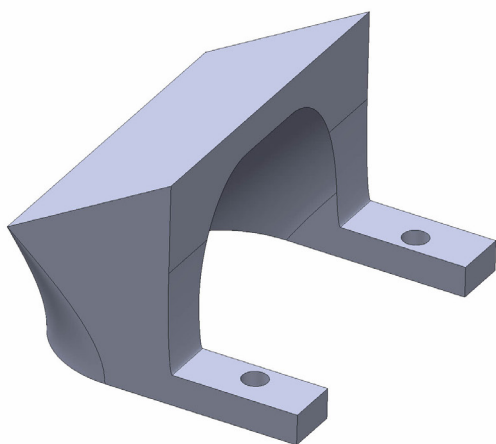


<b>PART Nr.:</b>	<b>01-16</b>
<b>MATERIAL:</b>	PET(G), CPE, ASA, ABS
<b>LAYER:</b>	0,1 - 0,15mm
<b>AMOUNT:</b>	1x
<b>SUPPORT:</b>	NO
<b>NOZZLE:</b>	0,25 - 0,3mm

NOTES:

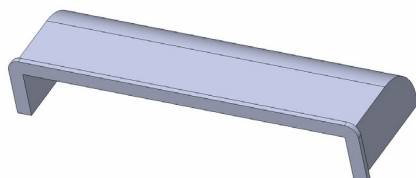
# Jagdpanzer 38(t)

## Printing guide



<b>PART Nr.:</b>	<b>01-17</b>
<b>MATERIAL:</b>	PET(G), CPE, ASA, ABS
<b>LAYER:</b>	0,1 - 0,25mm
<b>AMOUNT:</b>	1x
<b>SUPPORT:</b>	NO
<b>NOZZLE:</b>	0,25 - 0,4mm

NOTES:

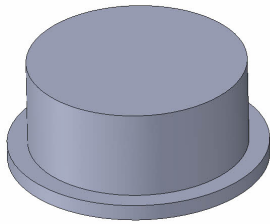


<b>PART Nr.:</b>	<b>01-18</b>
<b>MATERIAL:</b>	PET(G), CPE, ASA, ABS
<b>LAYER:</b>	0,1 - 0,15mm
<b>AMOUNT:</b>	1x
<b>SUPPORT:</b>	NO
<b>NOZZLE:</b>	0,25 - 0,3mm

NOTES:

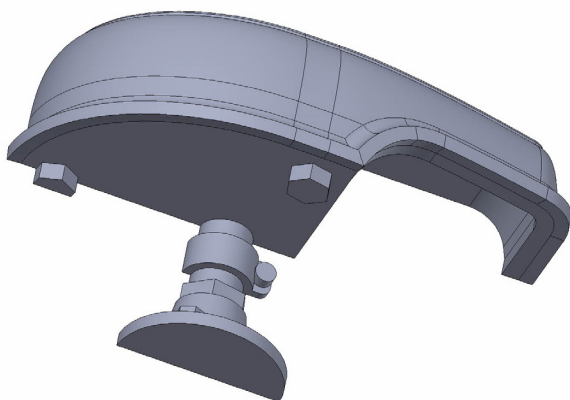
# Jagdpanzer 38(t)

## Printing guide



<b>PART Nr.:</b>	<b>01-19</b>
<b>MATERIAL:</b>	PET(G), CPE, ASA, ABS
<b>LAYER:</b>	0,1 - 0,15mm
<b>AMOUNT:</b>	1x
<b>SUPPORT:</b>	NO
<b>NOZZLE:</b>	0,25 - 0,3mm

**NOTES:** The part is identical to part **04-15**. You will need a total of 3 pieces of this part to build.



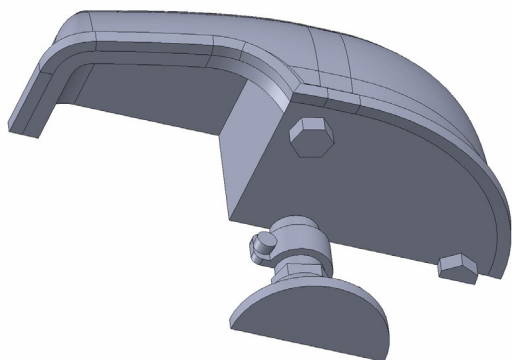
<b>PART Nr.:</b>	<b>01-20A</b>
<b>MATERIAL:</b>	PET(G), CPE, ASA, ABS
<b>LAYER:</b>	0,1 - 0,15mm
<b>AMOUNT:</b>	1x
<b>SUPPORT:</b>	NO
<b>NOZZLE:</b>	0,25 - 0,3mm

**NOTES:** If you want to fit the light with a small SMD diode, print part **01-20A\_alt**. Suitable for 5630 SMD LED.



# Jagdpanzer 38(t)

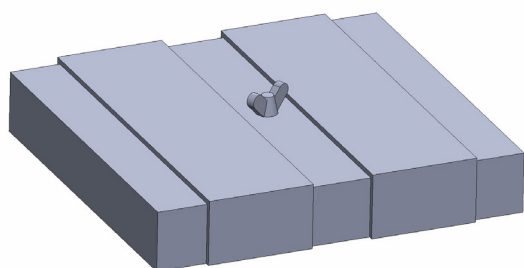
## Printing guide



<b>PART Nr.:</b>	<b>01-20B</b>
<b>MATERIAL:</b>	PET(G), CPE, ASA, ABS
<b>LAYER:</b>	0,1 - 0,15mm
<b>AMOUNT:</b>	1x
<b>SUPPORT:</b>	NO
<b>NOZZLE:</b>	0,25 - 0,3mm

**NOTES:**

If you want to fit the light with a small SMD diode, print part **01-20B\_alt**. Suitable for 5630 SMD LED.

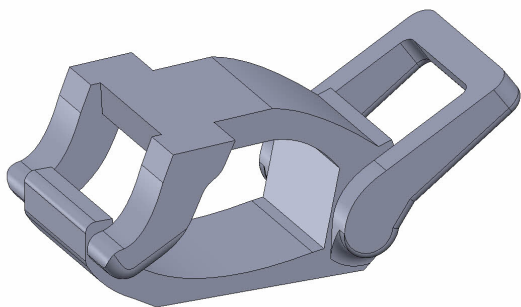


<b>PART Nr.:</b>	<b>01-21</b>
<b>MATERIAL:</b>	PET(G), CPE, ASA, ABS
<b>LAYER:</b>	0,1 - 0,15mm
<b>AMOUNT:</b>	1x
<b>SUPPORT:</b>	NO
<b>NOZZLE:</b>	0,25 - 0,3mm

**NOTES:**

# Jagdpanzer 38(t)

## Printing guide



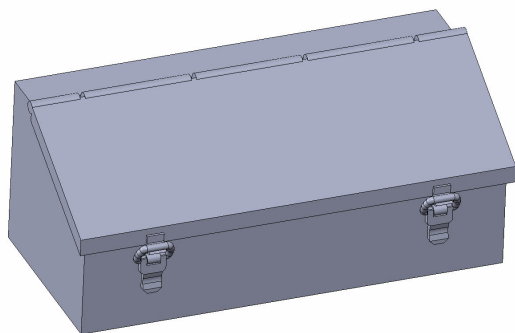
<b>PART Nr.:</b>	<b>01-22</b>
<b>MATERIAL:</b>	PET(G), CPE, ASA, ABS
<b>LAYER:</b>	0,1 - 0,15mm
<b>AMOUNT:</b>	3x
<b>SUPPORT:</b>	NO
<b>NOZZLE:</b>	0,25 - 0,3mm
<b>NOTES:</b>	The part is identical to part <b>04-22</b> . You will need a total of 3 pieces of this part to build.



<b>PART Nr.:</b>	<b>01-23</b>
<b>MATERIAL:</b>	PET(G), CPE, ASA, ABS
<b>LAYER:</b>	0,1 - 0,15mm
<b>AMOUNT:</b>	1x
<b>SUPPORT:</b>	NO
<b>NOZZLE:</b>	0,25 - 0,3mm
<b>NOTES:</b>	

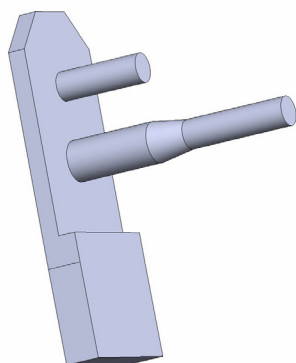
# Jagdpanzer 38(t)

## Printing guide



<b>PART Nr.:</b>	<b>01-24</b>
<b>MATERIAL:</b>	PET(G), CPE, ASA, ABS
<b>LAYER:</b>	0,1 - 0,15mm
<b>AMOUNT:</b>	1x
<b>SUPPORT:</b>	NO
<b>NOZZLE:</b>	0,25 - 0,3mm

NOTES:

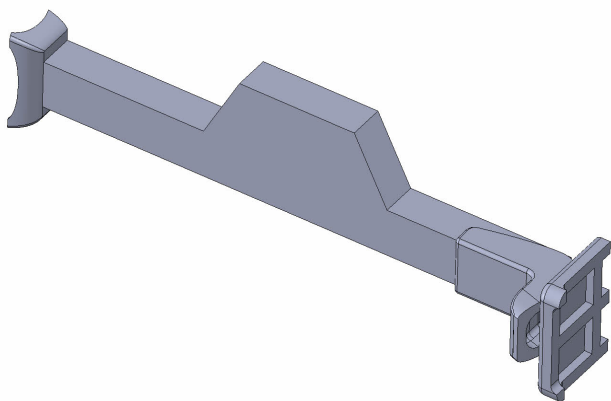


<b>PART Nr.:</b>	<b>01-25</b>
<b>MATERIAL:</b>	PET(G), CPE, ASA, ABS
<b>LAYER:</b>	0,1 - 0,15mm
<b>AMOUNT:</b>	1x
<b>SUPPORT:</b>	NO
<b>NOZZLE:</b>	0,25 - 0,3mm

NOTES:

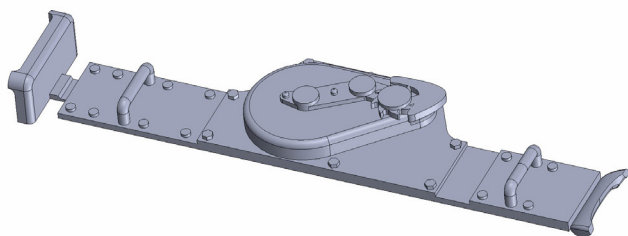
# Jagdpanzer 38(t)

## Printing guide



<b>PART Nr.:</b>	<b>01-26A</b>
<b>MATERIAL:</b>	PET(G), CPE, ASA, ABS
<b>LAYER:</b>	0,1 - 0,15mm
<b>AMOUNT:</b>	1x
<b>SUPPORT:</b>	NO
<b>NOZZLE:</b>	0,25 - 0,3mm

NOTES:

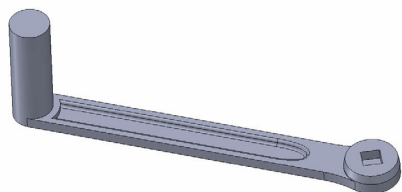


<b>PART Nr.:</b>	<b>01-26B</b>
<b>MATERIAL:</b>	PET(G), CPE, ASA, ABS
<b>LAYER:</b>	0,1 - 0,15mm
<b>AMOUNT:</b>	1x
<b>SUPPORT:</b>	NO
<b>NOZZLE:</b>	0,25 - 0,3mm

NOTES:

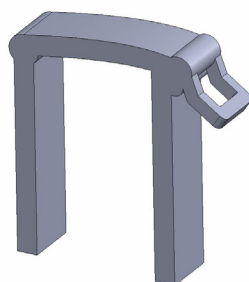
# Jagdpanzer 38(t)

## Printing guide



<b>PART Nr.:</b>	<b>01-26C</b>
<b>MATERIAL:</b>	PET(G), CPE, ASA, ABS
<b>LAYER:</b>	0,1 - 0,15mm
<b>AMOUNT:</b>	1x
<b>SUPPORT:</b>	NO
<b>NOZZLE:</b>	0,25 - 0,3mm

NOTES:



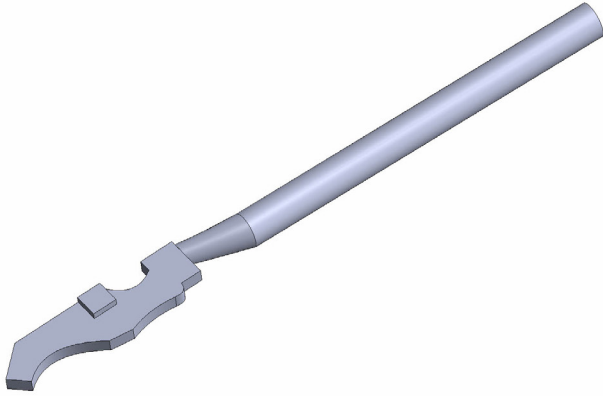
<b>PART Nr.:</b>	<b>01-26D</b>
<b>MATERIAL:</b>	PET(G), CPE, ASA, ABS
<b>LAYER:</b>	0,1 - 0,15mm
<b>AMOUNT:</b>	2x
<b>SUPPORT:</b>	NO
<b>NOZZLE:</b>	0,25 - 0,3mm

NOTES:



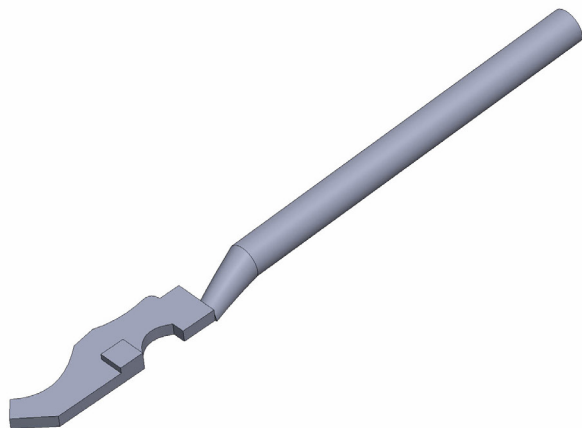
# Jagdpanzer 38(t)

## Printing guide



<b>PART Nr.:</b>	<b>01-27A</b>
<b>MATERIAL:</b>	PET(G), CPE, ASA, ABS
<b>LAYER:</b>	0,1 - 0,15mm
<b>AMOUNT:</b>	1x
<b>SUPPORT:</b>	NO
<b>NOZZLE:</b>	0,25 - 0,3mm

NOTES:

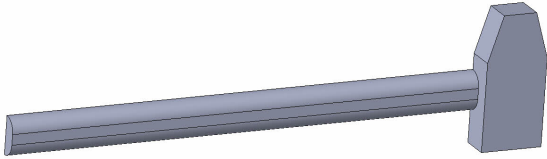


<b>PART Nr.:</b>	<b>01-27B</b>
<b>MATERIAL:</b>	PET(G), CPE, ASA, ABS
<b>LAYER:</b>	0,1 - 0,15mm
<b>AMOUNT:</b>	1x
<b>SUPPORT:</b>	NO
<b>NOZZLE:</b>	0,25 - 0,3mm

NOTES:

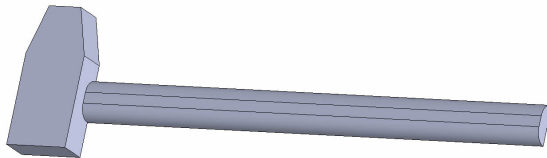
# Jagdpanzer 38(t)

## Printing guide



<b>PART Nr.:</b>	<b>01-28A</b>
<b>MATERIAL:</b>	PET(G), CPE, ASA, ABS
<b>LAYER:</b>	0,1 - 0,15mm
<b>AMOUNT:</b>	1x
<b>SUPPORT:</b>	NO
<b>NOZZLE:</b>	0,25 - 0,3mm

NOTES:

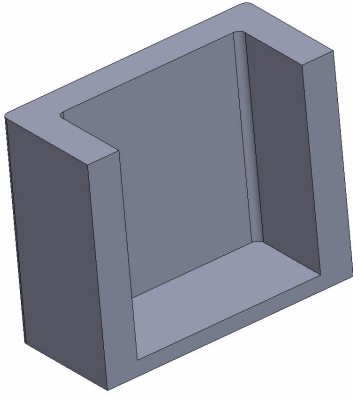


<b>PART Nr.:</b>	<b>01-28B</b>
<b>MATERIAL:</b>	PET(G), CPE, ASA, ABS
<b>LAYER:</b>	0,1 - 0,15mm
<b>AMOUNT:</b>	2x
<b>SUPPORT:</b>	NO
<b>NOZZLE:</b>	0,25 - 0,3mm

NOTES:

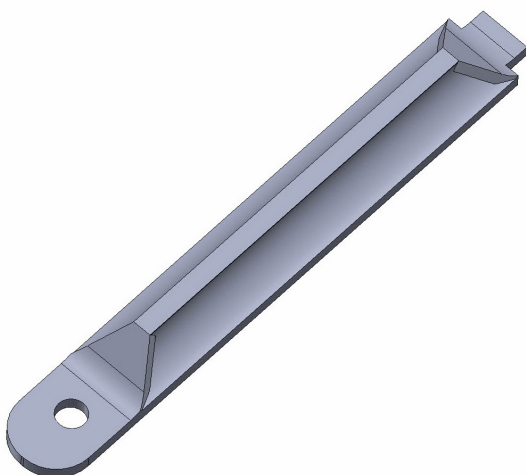
# Jagdpanzer 38(t)

## Printing guide



<b>PART Nr.:</b>	<b>01-28C</b>
<b>MATERIAL:</b>	PET(G), CPE, ASA, ABS
<b>LAYER:</b>	0,1 - 0,15mm
<b>AMOUNT:</b>	1x
<b>SUPPORT:</b>	NO
<b>NOZZLE:</b>	0,25 - 0,3mm

NOTES:

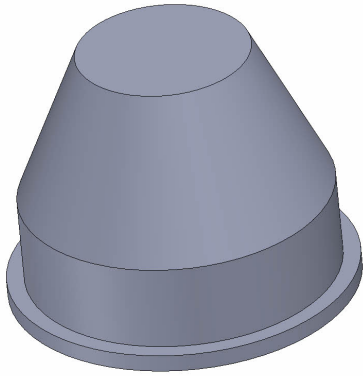


<b>PART Nr.:</b>	<b>01-29</b>
<b>MATERIAL:</b>	PET(G), CPE, ASA, ABS
<b>LAYER:</b>	0,1 - 0,15mm
<b>AMOUNT:</b>	2x
<b>SUPPORT:</b>	NO
<b>NOZZLE:</b>	0,25 - 0,3mm

NOTES:

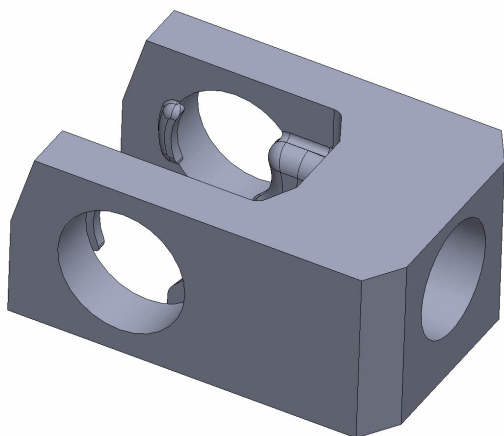
# Jagdpanzer 38(t)

## Printing guide



<b>PART Nr.:</b>	<b>01-30</b>
<b>MATERIAL:</b>	PET(G), CPE, ASA, ABS
<b>LAYER:</b>	0,1 - 0,15mm
<b>AMOUNT:</b>	1x
<b>SUPPORT:</b>	NO
<b>NOZZLE:</b>	0,25 - 0,3mm

NOTES:

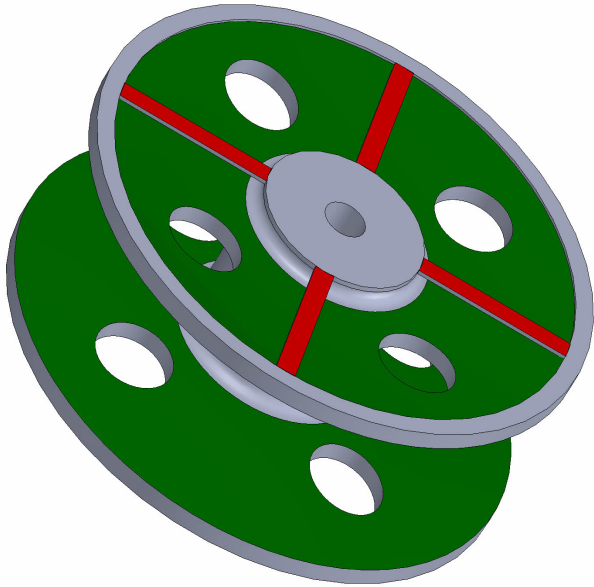


<b>PART Nr.:</b>	<b>01-31</b>
<b>MATERIAL:</b>	PET(G), CPE, ASA, ABS
<b>LAYER:</b>	0,1 - 0,15mm
<b>AMOUNT:</b>	2x
<b>SUPPORT:</b>	NO
<b>NOZZLE:</b>	0,25 - 0,3mm

NOTES:

# Jagdpanzer 38(t)

## Printing guide

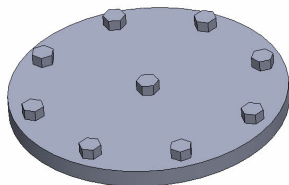


<b>PART Nr.:</b>	<b>01-32</b>
<b>MATERIAL:</b>	PET(G), CPE, ASA, ABS
<b>LAYER:</b>	0,1 - 0,15mm
<b>AMOUNT:</b>	2x
<b>SUPPORT:</b>	YES
<b>NOZZLE:</b>	0,25 - 0,3mm

**NOTES:**

Apply the support to areas marked in green.

Cut off the auxiliary areas marked in red.



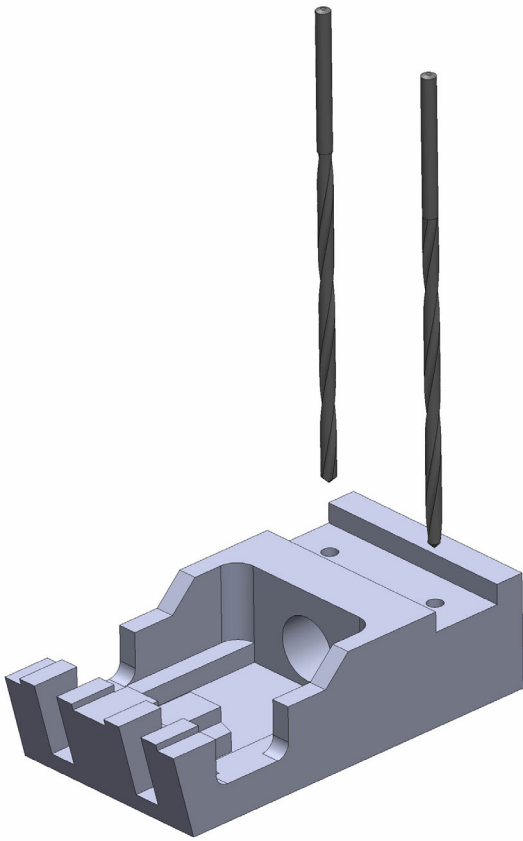
<b>PART Nr.:</b>	<b>01-33</b>
<b>MATERIAL:</b>	PET(G), CPE, ASA, ABS
<b>LAYER:</b>	0,1 - 0,15mm
<b>AMOUNT:</b>	2x
<b>SUPPORT:</b>	NO
<b>NOZZLE:</b>	0,25 - 0,3mm

**NOTES:**

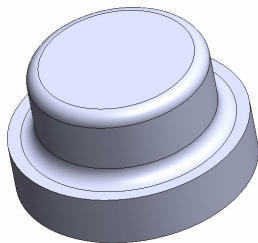


# Jagdpanzer 38(t)

## Printing guide



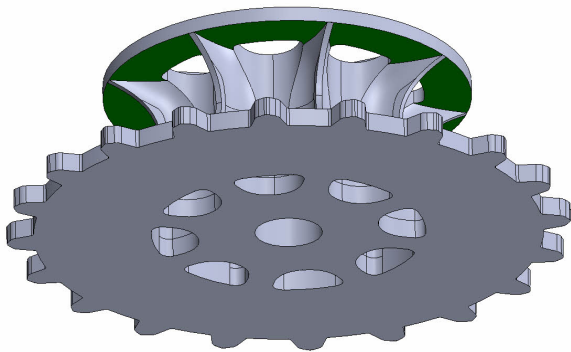
<b>PART Nr.:</b>	<b>01-34</b>
<b>MATERIAL:</b>	PET(G), CPE, ASA, ABS
<b>LAYER:</b>	0,1 - 0,2mm
<b>AMOUNT:</b>	2x
<b>SUPPORT:</b>	NO
<b>NOZZLE:</b>	0,25 - 0,4mm
<b>NOTES:</b>	Drill the screw holes with a 2-2.5mm drill bit.



<b>PART Nr.:</b>	<b>01-35</b>
<b>MATERIAL:</b>	PET(G), CPE, ASA, ABS
<b>LAYER:</b>	0,1 - 0,15mm
<b>AMOUNT:</b>	2x
<b>SUPPORT:</b>	NO
<b>NOZZLE:</b>	0,25 - 0,3mm
<b>NOTES:</b>	

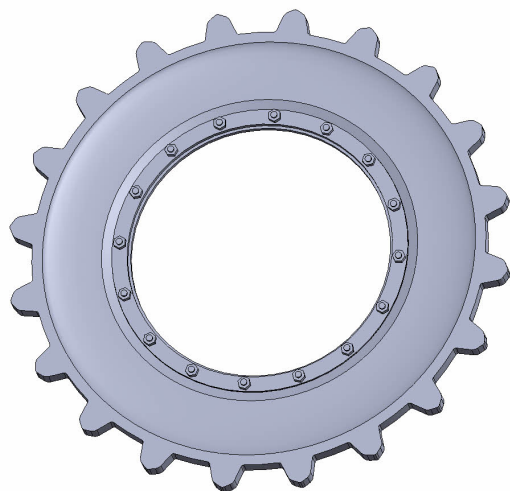
# Jagdpanzer 38(t)

## Printing guide



<b>PART Nr.:</b>	<b>01-36</b>
<b>MATERIAL:</b>	ASA, ABS
<b>LAYER:</b>	0,1 - 0,15mm
<b>AMOUNT:</b>	2x
<b>SUPPORT:</b>	YES
<b>NOZZLE:</b>	0,25 - 0,3mm

**NOTES:** Apply the support to areas marked in green.  
It is recommended to print the part from ASA or ABS for the possibility of very strong bonding using acetone.

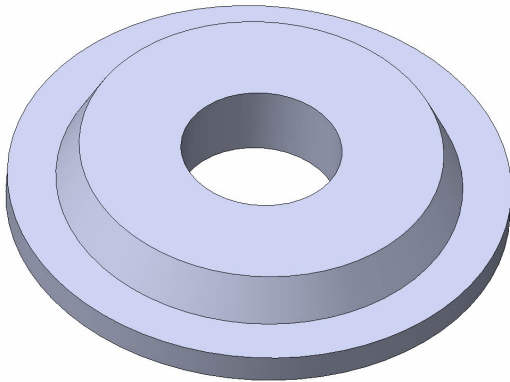


<b>PART Nr.:</b>	<b>01-37</b>
<b>MATERIAL:</b>	ASA, ABS
<b>LAYER:</b>	0,1 - 0,15mm
<b>AMOUNT:</b>	2x
<b>SUPPORT:</b>	NO
<b>NOZZLE:</b>	0,25 - 0,3mm

**NOTES:** It is recommended to print the part from ASA or ABS for the possibility of very strong bonding using acetone.

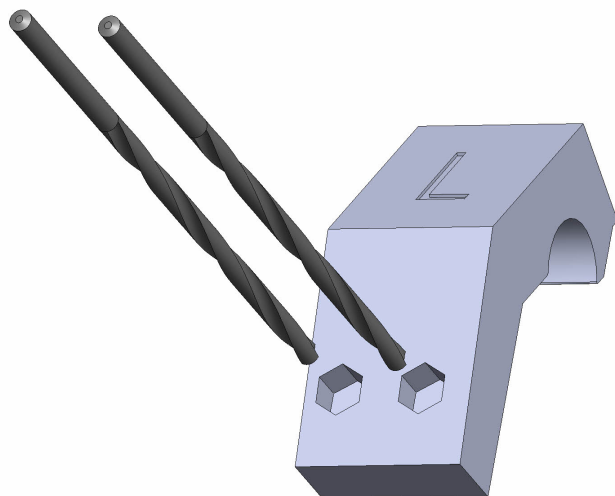
# Jagdpanzer 38(t)

## Printing guide



<b>PART Nr.:</b>	<b>01-38</b>
<b>MATERIAL:</b>	PET(G), CPE, ASA, ABS
<b>LAYER:</b>	0,1 - 0,15mm
<b>AMOUNT:</b>	2x
<b>SUPPORT:</b>	NO
<b>NOZZLE:</b>	0,25 - 0,3mm

NOTES:



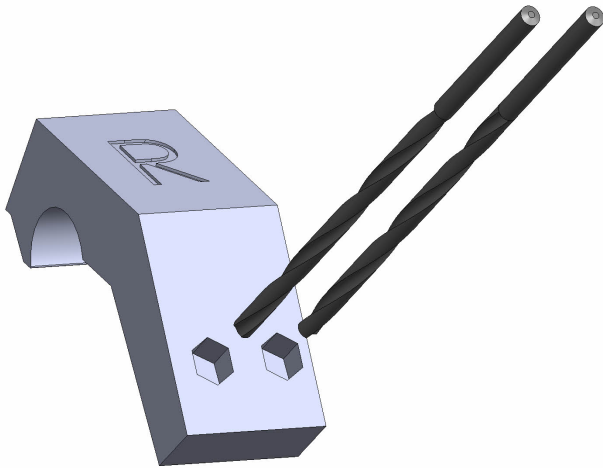
<b>PART Nr.:</b>	<b>01-39</b>
<b>MATERIAL:</b>	PET(G), CPE, ASA, ABS
<b>LAYER:</b>	0,1 - 0,2mm
<b>AMOUNT:</b>	1x
<b>SUPPORT:</b>	NO
<b>NOZZLE:</b>	0,25 - 0,4mm

NOTES:

Drill the screw holes with a 2-2.5mm drill bit.

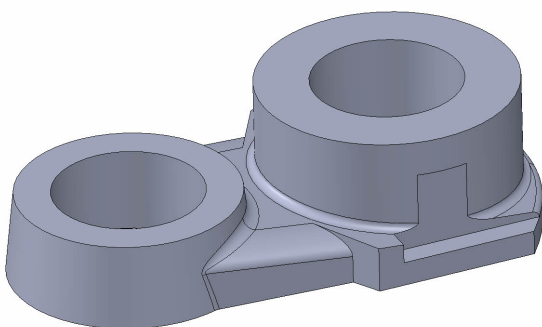
# Jagdpanzer 38(t)

## Printing guide



<b>PART Nr.:</b>	<b>01-40</b>
<b>MATERIAL:</b>	PET(G), CPE, ASA, ABS
<b>LAYER:</b>	0,1 - 0,2mm
<b>AMOUNT:</b>	1x
<b>SUPPORT:</b>	NO
<b>NOZZLE:</b>	0,25 - 0,4mm

**NOTES:** Drill the screw holes with a 2-2.5mm drill bit.

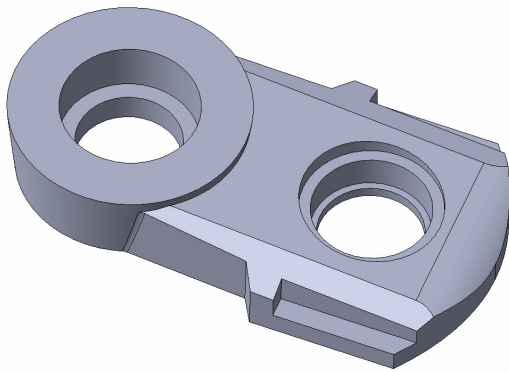


<b>PART Nr.:</b>	<b>01-41</b>
<b>MATERIAL:</b>	ASA, ABS
<b>LAYER:</b>	0,1 - 0,15mm
<b>AMOUNT:</b>	8x
<b>SUPPORT:</b>	NO
<b>NOZZLE:</b>	0,25 - 0,3mm

**NOTES:** It is recommended to print the part from ASA or ABS for the possibility of very strong bonding using acetone.

# Jagdpanzer 38(t)

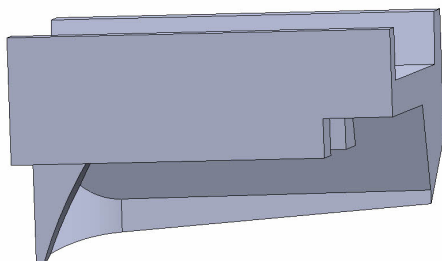
## Printing guide



<b>PART Nr.:</b>	<b>01-42</b>
<b>MATERIAL:</b>	ASA, ABS
<b>LAYER:</b>	0,1 - 0,15mm
<b>AMOUNT:</b>	8x
<b>SUPPORT:</b>	NO
<b>NOZZLE:</b>	0,25 - 0,3mm

**NOTES:**

It is recommended to print the part from ASA or ABS for the possibility of very strong bonding using acetone.



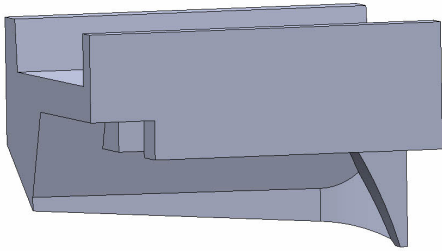
<b>PART Nr.:</b>	<b>01-43A</b>
<b>MATERIAL:</b>	ASA, ABS
<b>LAYER:</b>	0,1 - 0,15mm
<b>AMOUNT:</b>	4x
<b>SUPPORT:</b>	NO
<b>NOZZLE:</b>	0,25 - 0,3mm

**NOTES:**

It is recommended to print the part from ASA or ABS for the possibility of very strong bonding using acetone.

# Jagdpanzer 38(t)

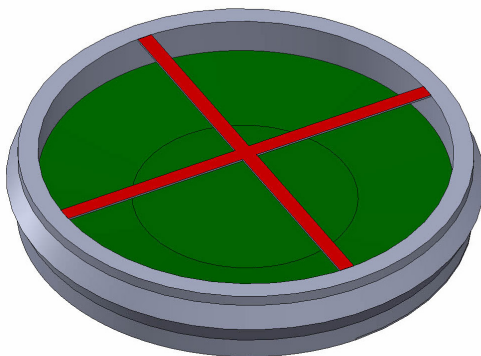
## Printing guide



<b>PART Nr.:</b>	<b>01-43B</b>
<b>MATERIAL:</b>	ASA, ABS
<b>LAYER:</b>	0,1 - 0,15mm
<b>AMOUNT:</b>	4x
<b>SUPPORT:</b>	NO
<b>NOZZLE:</b>	0,25 - 0,3mm

**NOTES:**

It is recommended to print the part from ASA or ABS for the possibility of very strong bonding using acetone.



<b>PART Nr.:</b>	<b>01-44A</b>
<b>MATERIAL:</b>	PET(G), CPE, ASA, ABS
<b>LAYER:</b>	0,1 - 0,15mm
<b>AMOUNT:</b>	8x
<b>SUPPORT:</b>	YES
<b>NOZZLE:</b>	0,25 - 0,3mm

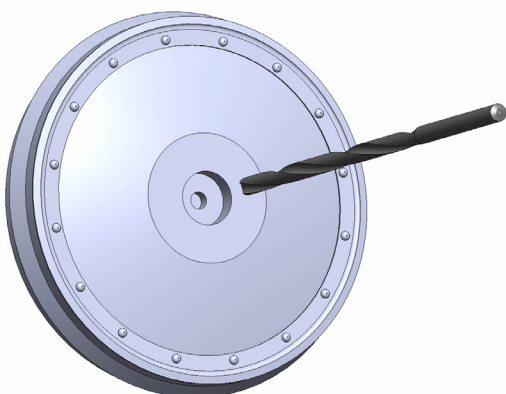
**NOTES:**

Apply the support to areas marked in green.

Cut off the auxiliary areas marked in red.

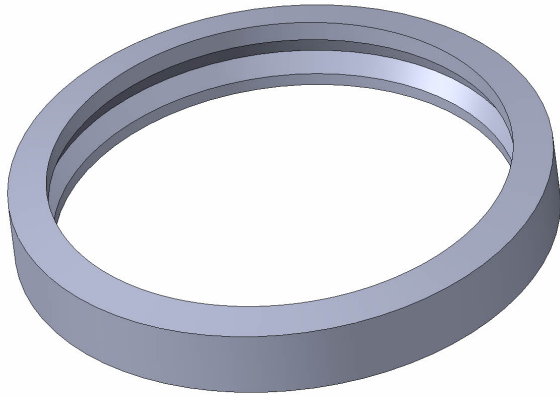
If you do not need the auxiliary areas, you can print an alternate part **01-03\_NO\_BASE**.

Drill the screw holes with a 2mm drill bit.



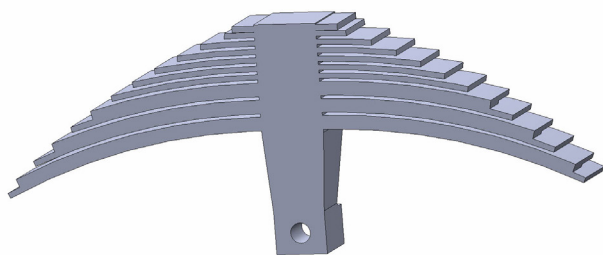
# Jagdpanzer 38(t)

## Printing guide



<b>PART Nr.:</b>	<b>01-44B</b>
<b>MATERIAL:</b>	TPU, TPE, NINJAFLEX
<b>LAYER:</b>	0,1 - 0,15mm
<b>AMOUNT:</b>	8x
<b>SUPPORT:</b>	NO
<b>NOZZLE:</b>	0,4mm

NOTES:



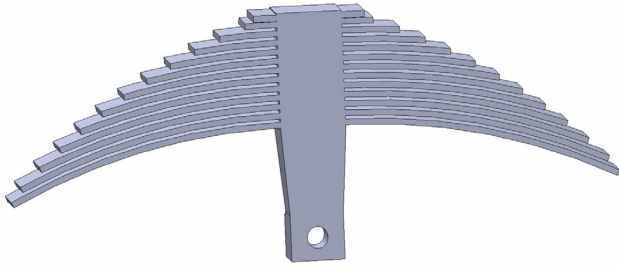
<b>PART Nr.:</b>	<b>01-45A</b>
<b>MATERIAL:</b>	ASA, ABS, NYLON
<b>LAYER:</b>	0,1 - 0,15mm
<b>AMOUNT:</b>	2x
<b>SUPPORT:</b>	NO
<b>NOZZLE:</b>	0,25 - 0,3mm

NOTES:

We recommend printing from ASA, ABS or Nylon for greater flexibility.

## Jagdpanzer 38(t)

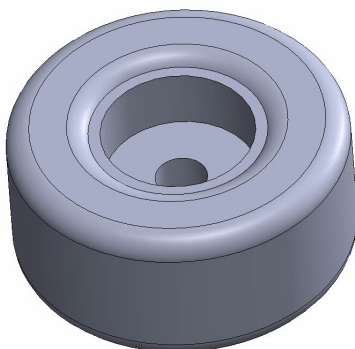
### Printing guide



<b>PART Nr.:</b>	<b>01-45B</b>
<b>MATERIAL:</b>	ASA, ABS, NYLON
<b>LAYER:</b>	0,1 - 0,15mm
<b>AMOUNT:</b>	2x
<b>SUPPORT:</b>	NO
<b>NOZZLE:</b>	0,25 - 0,3mm

**NOTES:**

We recommend printing from ASA, ABS or Nylon for greater flexibility.



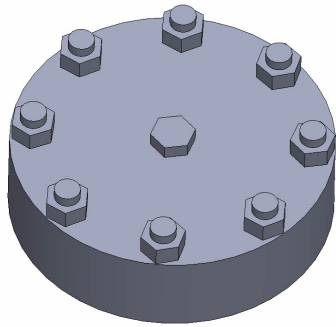
<b>PART Nr.:</b>	<b>01-46</b>
<b>MATERIAL:</b>	PET(G), CPE, ASA, ABS
<b>LAYER:</b>	0,1 - 0,15mm
<b>AMOUNT:</b>	2x
<b>SUPPORT:</b>	NO
<b>NOZZLE:</b>	0,25 - 0,3mm

**NOTES:**



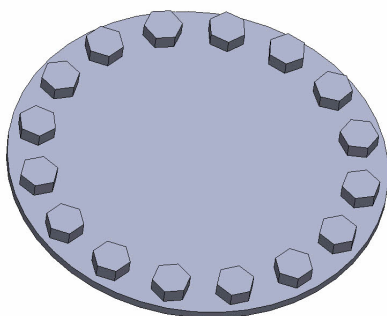
# Jagdpanzer 38(t)

## Printing guide



<b>PART Nr.:</b>	<b>01-47</b>
<b>MATERIAL:</b>	PET(G), CPE, ASA, ABS
<b>LAYER:</b>	0,1 - 0,15mm
<b>AMOUNT:</b>	2x
<b>SUPPORT:</b>	NO
<b>NOZZLE:</b>	0,25 - 0,3mm

NOTES:



<b>PART Nr.:</b>	<b>01-48</b>
<b>MATERIAL:</b>	PET(G), CPE, ASA, ABS
<b>LAYER:</b>	0,1 - 0,15mm
<b>AMOUNT:</b>	8x
<b>SUPPORT:</b>	NO
<b>NOZZLE:</b>	0,25 - 0,3mm

NOTES:



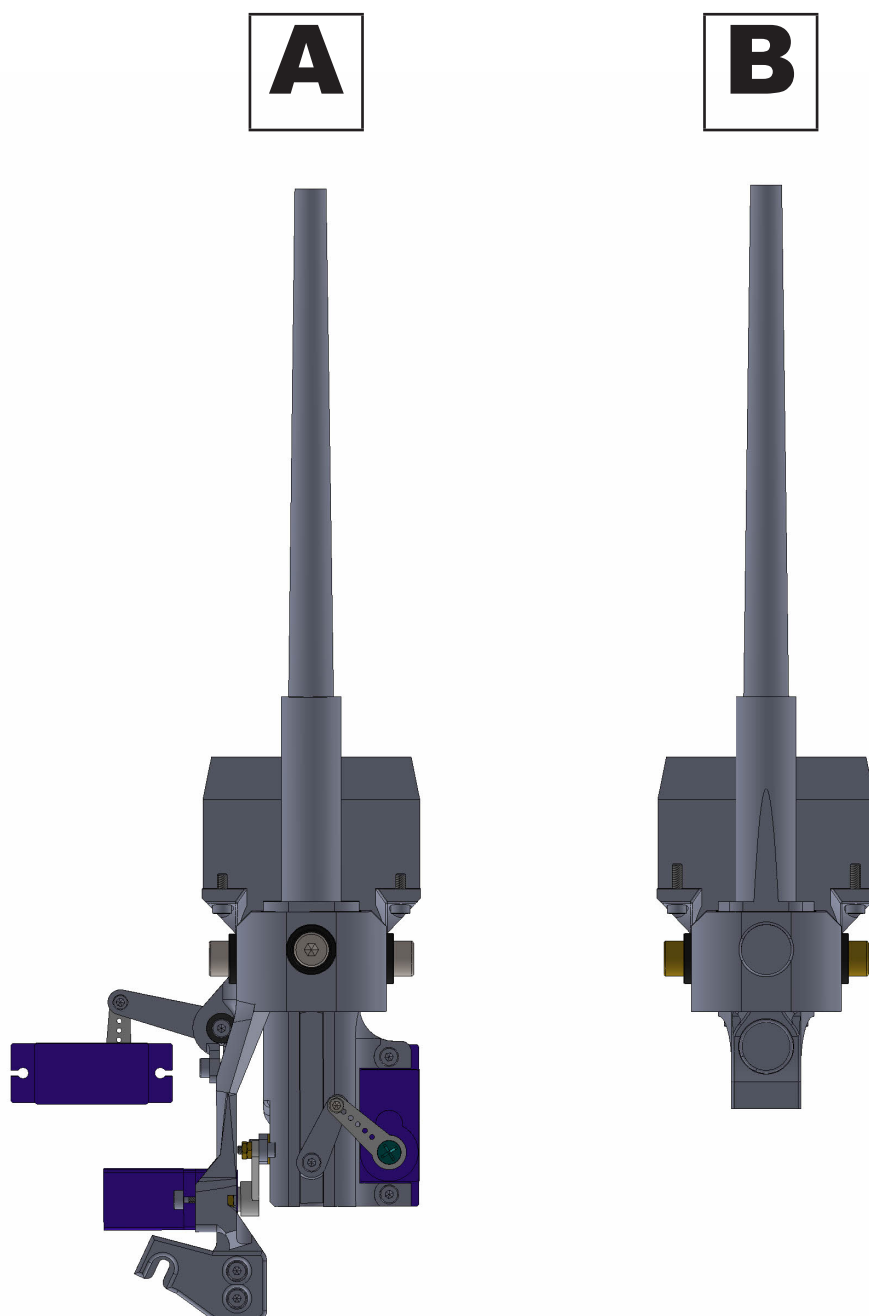
There are 2 different cannon types to choose from.  
The canon can be replaced at any time with another type:

**A** - servomotor-controlled elevation, delivery and recoil. Possible flash unit installation. We recommend using the Elmod® Fusion PRO control unit.

**B** - a simple cannon with a functional elevation. Uses Heng-Long compatible elevation units.

Parts needed for a type A cannon are marked as 02A-xx.

Parts for type B cannon are marked as 02B-xx.

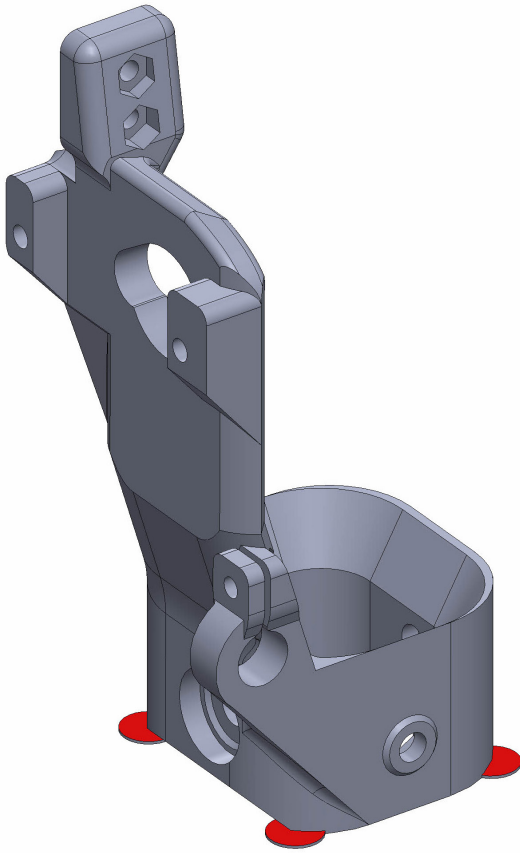


# **Jagdpanzer 38(t)**

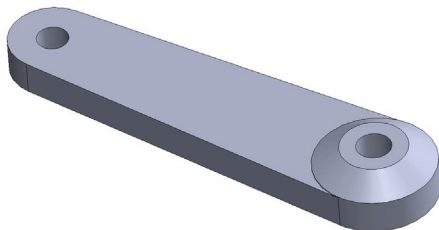
## Printing guide

# Jagdpanzer 38(t)

## Printing guide



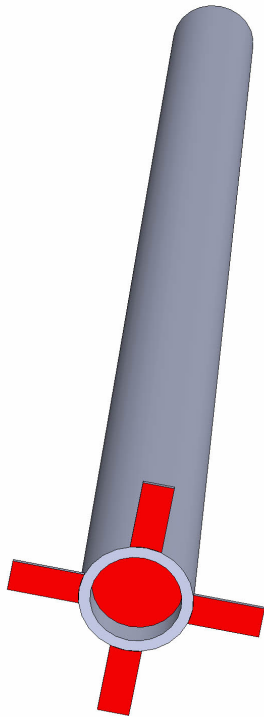
<b>PART Nr.:</b>	<b>02A-01</b>
<b>MATERIAL:</b>	PET(G), CPE, ASA, ABS
<b>LAYER:</b>	0,1 - 0,15mm
<b>AMOUNT:</b>	1x
<b>SUPPORT:</b>	NO
<b>NOZZLE:</b>	0,25 - 0,3mm
<b>NOTES:</b>	Cut off the auxiliary areas marked in red. If you do not need the auxiliary areas, you can print an alternate part <b>02A-01_NO_BASE</b> .



<b>PART Nr.:</b>	<b>02A-02</b>
<b>MATERIAL:</b>	PET(G), CPE, ASA, ABS
<b>LAYER:</b>	0,1 - 0,15mm
<b>AMOUNT:</b>	1x
<b>SUPPORT:</b>	NO
<b>NOZZLE:</b>	0,25 - 0,3mm
<b>NOTES:</b>	

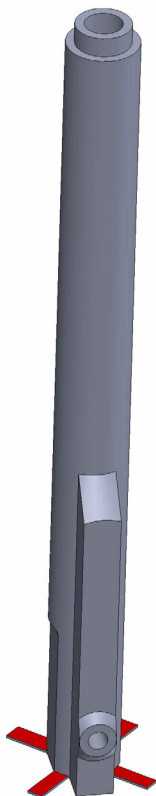
# Jagdpanzer 38(t)

## Printing guide



<b>PART Nr.:</b>	<b>02A-03</b>
<b>MATERIAL:</b>	PET(G), CPE, ASA, ABS
<b>LAYER:</b>	0,1 - 0,15mm
<b>AMOUNT:</b>	1x
<b>SUPPORT:</b>	NO
<b>NOZZLE:</b>	0,25 - 0,3mm

**NOTES:** Cut off the auxiliary areas marked in red.  
If you do not need the auxiliary areas, you can print an alternate part **02A-03\_NO\_BASE**.

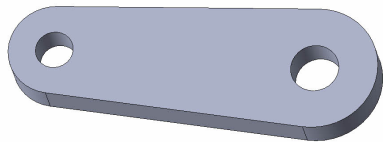
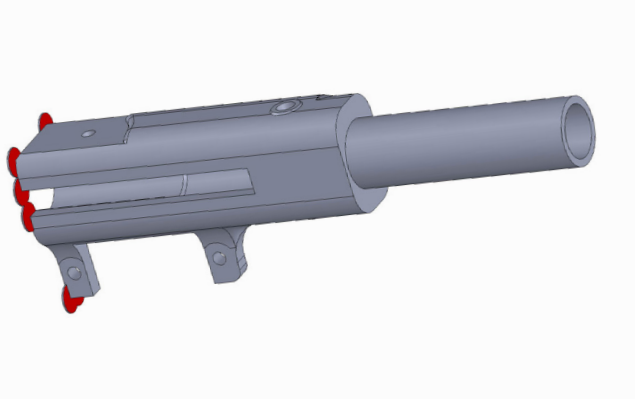
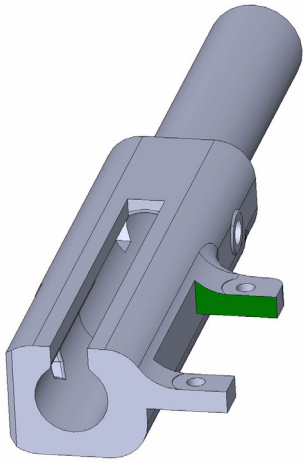


<b>PART Nr.:</b>	<b>02A-04</b>
<b>MATERIAL:</b>	PET(G), CPE, ASA, ABS
<b>LAYER:</b>	0,1 - 0,15mm
<b>AMOUNT:</b>	1x
<b>SUPPORT:</b>	NO
<b>NOZZLE:</b>	0,25 - 0,3mm

**NOTES:** Cut off the auxiliary areas marked in red.  
If you do not need the auxiliary areas, you can print an alternate part **02A-04\_NO\_BASE**.

# Jagdpanzer 38(t)

## Printing guide



<b>PART Nr.:</b>	<b>02A-05</b>
<b>MATERIAL:</b>	PET(G), CPE, ASA, ABS
<b>LAYER:</b>	0,1 - 0,15mm
<b>AMOUNT:</b>	1x
<b>SUPPORT:</b>	YES
<b>NOZZLE:</b>	0,25 - 0,3mm

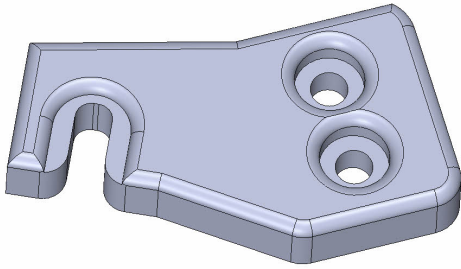
<b>NOTES:</b>	<p><b>Use the support only on the area marked in green !!!</b></p> <p>Cut off the auxiliary areas marked in red. If you do not need the auxiliary areas, you can print an alternate part <b>02A-05_NO_BASE</b>.</p>
---------------	---

<b>PART Nr.:</b>	<b>02A-06</b>
<b>MATERIAL:</b>	PET(G), CPE, ASA, ABS
<b>LAYER:</b>	0,1 - 0,15mm
<b>AMOUNT:</b>	2x
<b>SUPPORT:</b>	NO
<b>NOZZLE:</b>	0,25 - 0,3mm

<b>NOTES:</b>	
---------------	--

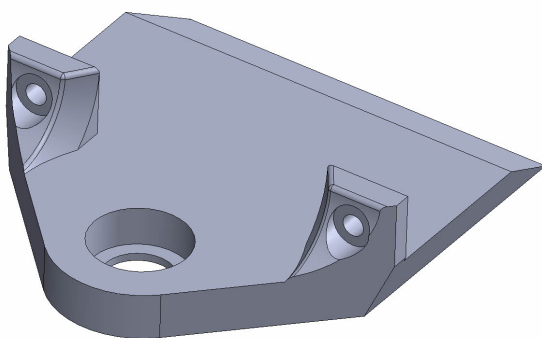
# Jagdpanzer 38(t)

## Printing guide



<b>PART Nr.:</b>	<b>02A-07</b>
<b>MATERIAL:</b>	PET(G), CPE, ASA, ABS
<b>LAYER:</b>	0,1 - 0,15mm
<b>AMOUNT:</b>	1x
<b>SUPPORT:</b>	NO
<b>NOZZLE:</b>	0,25 - 0,3mm

NOTES:



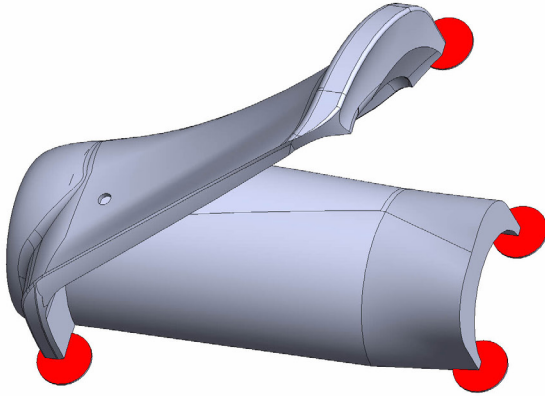
<b>PART Nr.:</b>	<b>02A-08</b>
<b>MATERIAL:</b>	PET(G), CPE, ASA, ABS
<b>LAYER:</b>	0,1 - 0,15mm
<b>AMOUNT:</b>	1x
<b>SUPPORT:</b>	NO
<b>NOZZLE:</b>	0,25 - 0,3mm

NOTES:



# Jagdpanzer 38(t)

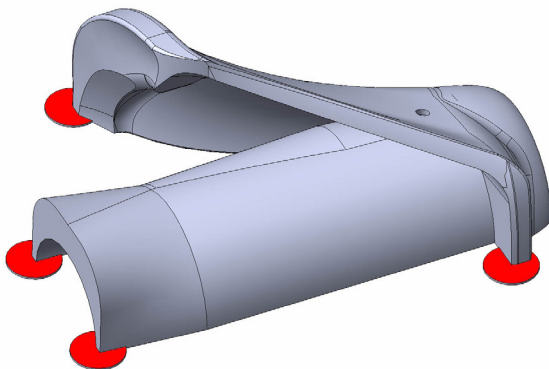
## Printing guide



<b>PART Nr.:</b>	<b>02A-09</b>
<b>MATERIAL:</b>	PET(G), CPE, ASA, ABS
<b>LAYER:</b>	0,1 - 0,15mm
<b>AMOUNT:</b>	1x
<b>SUPPORT:</b>	NO
<b>NOZZLE:</b>	0,25 - 0,3mm

**NOTES:**

Cut off the auxiliary areas marked in red.  
 If you do not need the auxiliary areas, you can print an alternate part **02A-09\_NO\_BASE**.  
 The part is identical to part **02B-07**.



<b>PART Nr.:</b>	<b>02A-10</b>
<b>MATERIAL:</b>	PET(G), CPE, ASA, ABS
<b>LAYER:</b>	0,1 - 0,15mm
<b>AMOUNT:</b>	1x
<b>SUPPORT:</b>	NO
<b>NOZZLE:</b>	0,25 - 0,3mm

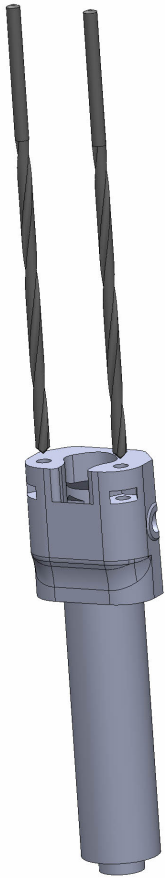
**NOTES:**

Cut off the auxiliary areas marked in red.  
 If you do not need the auxiliary areas, you can print an alternate part **02A-10\_NO\_BASE**.  
 The part is identical to part **02B-08**.



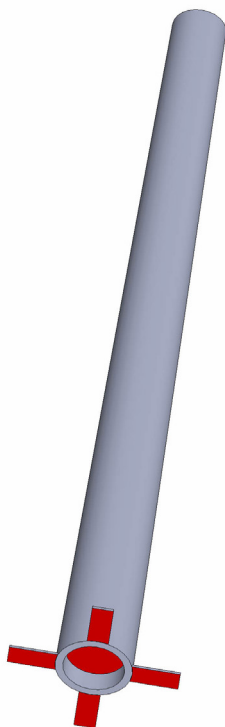
# Jagdpanzer 38(t)

## Printing guide



<b>PART Nr.:</b>	<b>02B-01</b>
<b>MATERIAL:</b>	PET(G), CPE, ASA, ABS
<b>LAYER:</b>	0,1 - 0,15mm
<b>AMOUNT:</b>	1x
<b>SUPPORT:</b>	NO
<b>NOZZLE:</b>	0,25 - 0,3mm

**NOTES:** Drill the screw holes with a 2-2.5mm drill bit.

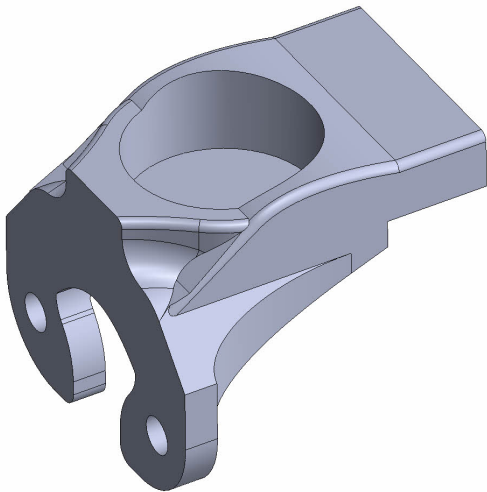


<b>PART Nr.:</b>	<b>02B-02</b>
<b>MATERIAL:</b>	PET(G), CPE, ASA, ABS
<b>LAYER:</b>	0,1 - 0,15mm
<b>AMOUNT:</b>	1x
<b>SUPPORT:</b>	NO
<b>NOZZLE:</b>	0,25 - 0,3mm

**NOTES:** Cut off the auxiliary areas marked in red.  
If you do not need the auxiliary areas, you can print an alternate part **02B-02\_NO\_BASE**.

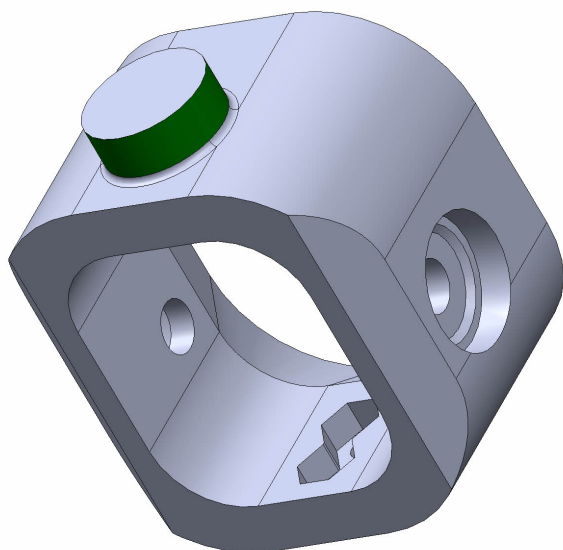
# Jagdpanzer 38(t)

## Printing guide



<b>PART Nr.:</b>	<b>02B-03</b>
<b>MATERIAL:</b>	PET(G), CPE, ASA, ABS
<b>LAYER:</b>	0,1 - 0,15mm
<b>AMOUNT:</b>	1x
<b>SUPPORT:</b>	NO
<b>NOZZLE:</b>	0,25 - 0,3mm

NOTES:



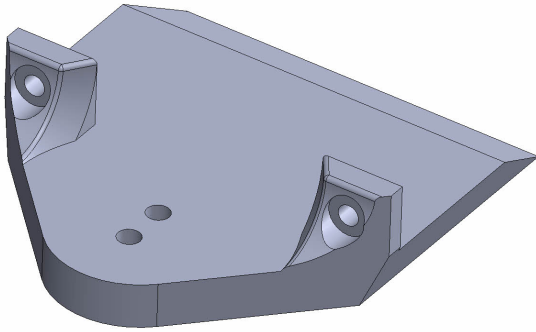
<b>PART Nr.:</b>	<b>02B-04</b>
<b>MATERIAL:</b>	PET(G), CPE, ASA, ABS
<b>LAYER:</b>	0,1 - 0,15mm
<b>AMOUNT:</b>	1x
<b>SUPPORT:</b>	YES
<b>NOZZLE:</b>	0,25 - 0,3mm

NOTES:

Apply the support to areas marked in green.

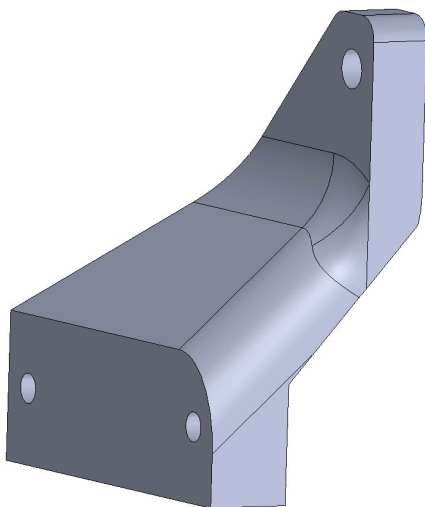
# Jagdpanzer 38(t)

## Printing guide



<b>PART Nr.:</b>	<b>02B-05</b>
<b>MATERIAL:</b>	PET(G), CPE, ASA, ABS
<b>LAYER:</b>	0,1 - 0,15mm
<b>AMOUNT:</b>	1x
<b>SUPPORT:</b>	NO
<b>NOZZLE:</b>	0,25 - 0,3mm

NOTES:

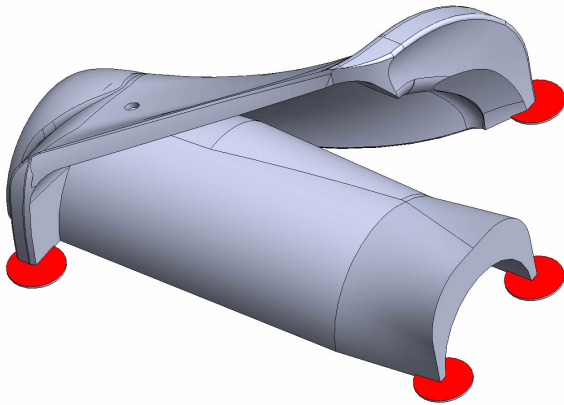


<b>PART Nr.:</b>	<b>02B-06</b>
<b>MATERIAL:</b>	PET(G), CPE, ASA, ABS
<b>LAYER:</b>	0,1 - 0,15mm
<b>AMOUNT:</b>	1x
<b>SUPPORT:</b>	NO
<b>NOZZLE:</b>	0,25 - 0,3mm

NOTES:

# Jagdpanzer 38(t)

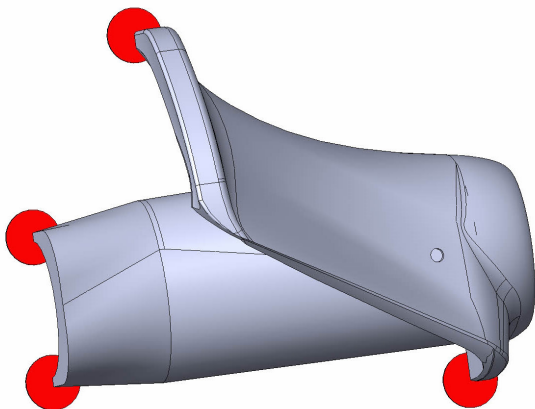
## Printing guide



<b>PART Nr.:</b>	<b>02B-07</b>
<b>MATERIAL:</b>	PET(G), CPE, ASA, ABS
<b>LAYER:</b>	0,1 - 0,15mm
<b>AMOUNT:</b>	1x
<b>SUPPORT:</b>	NO
<b>NOZZLE:</b>	0,25 - 0,3mm

**NOTES:**

Cut off the auxiliary areas marked in red.  
If you do not need the auxiliary areas, you can print an alternate part **02B-07\_NO\_BASE**.  
The part is identical to part **02A-09**.



<b>PART Nr.:</b>	<b>02B-08</b>
<b>MATERIAL:</b>	PET(G), CPE, ASA, ABS
<b>LAYER:</b>	0,1 - 0,15mm
<b>AMOUNT:</b>	1x
<b>SUPPORT:</b>	YES
<b>NOZZLE:</b>	0,25 - 0,3mm

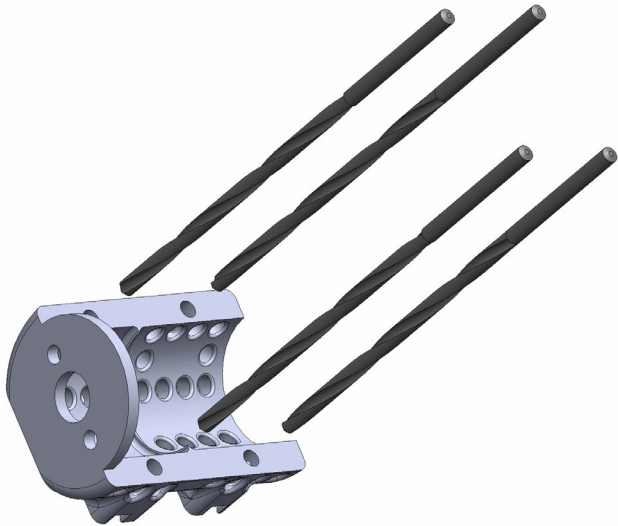
**NOTES:**

Cut off the auxiliary areas marked in red.  
If you do not need the auxiliary areas, you can print an alternate part **02B-08\_NO\_BASE**.  
The part is identical to part **02A-10**.



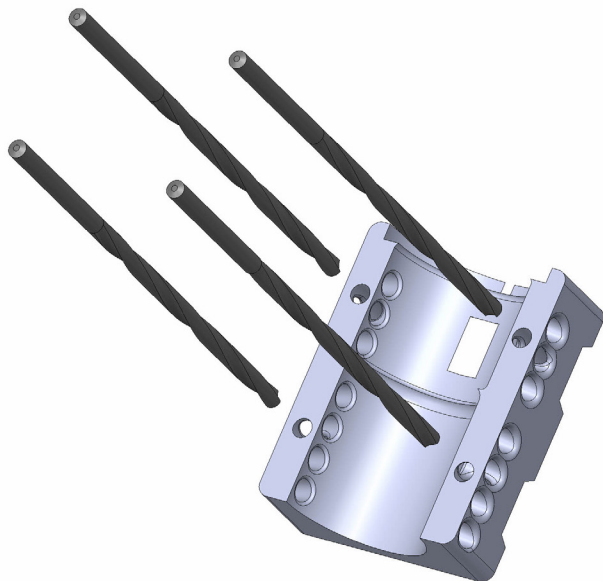
# Jagdpanzer 38(t)

## Printing guide



<b>PART Nr.:</b>	<b>03-01</b>
<b>MATERIAL:</b>	PET(G), CPE, ASA, ABS
<b>LAYER:</b>	0,1 - 0,15mm
<b>AMOUNT:</b>	2x
<b>SUPPORT:</b>	NO
<b>NOZZLE:</b>	0,25 - 0,3mm

**NOTES:** Drill the screw holes with a 3-3.5mm drill bit.



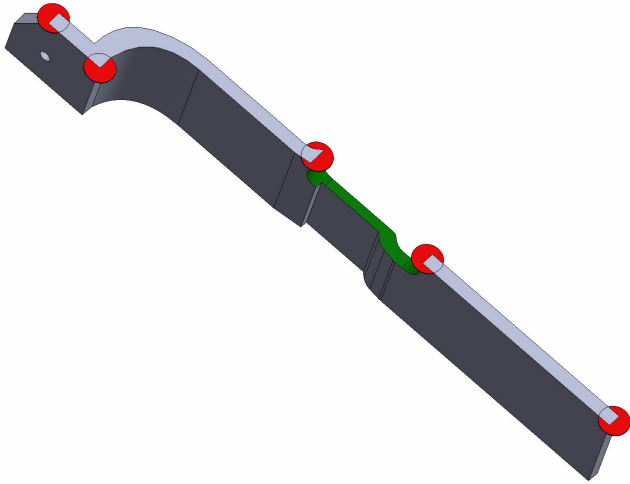
<b>PART Nr.:</b>	<b>03-02</b>
<b>MATERIAL:</b>	PET(G), CPE, ASA, ABS
<b>LAYER:</b>	0,1 - 0,15mm
<b>AMOUNT:</b>	2x
<b>SUPPORT:</b>	NO
<b>NOZZLE:</b>	0,25 - 0,3mm

**NOTES:** Drill the screw holes with a 3-3.5mm drill bit.



# Jagdpanzer 38(t)

## Printing guide



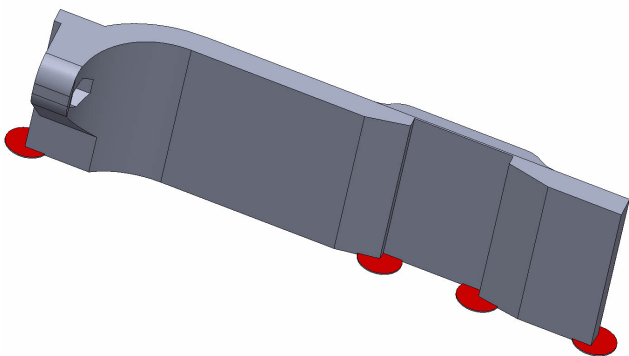
<b>PART Nr.:</b>	<b>03-03</b>
<b>MATERIAL:</b>	PET(G), CPE, ASA, ABS
<b>LAYER:</b>	0,1 - 0,2mm
<b>AMOUNT:</b>	1x
<b>SUPPORT:</b>	YES
<b>NOZZLE:</b>	0,25 - 0,4mm

**NOTES:**

Apply the support to areas marked in green.

Cut off the auxiliary areas marked in red.

If you do not need the auxiliary areas, you can print an alternate part **03-03\_NO\_BASE**.



<b>PART Nr.:</b>	<b>03-04</b>
<b>MATERIAL:</b>	PET(G), CPE, ASA, ABS
<b>LAYER:</b>	0,1 - 0,2mm
<b>AMOUNT:</b>	1x
<b>SUPPORT:</b>	NO
<b>NOZZLE:</b>	0,25 - 0,4mm

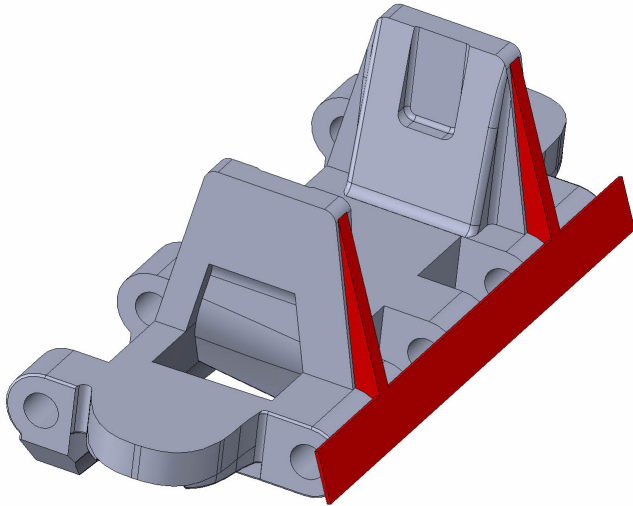
**NOTES:**

Cut off the auxiliary areas marked in red.

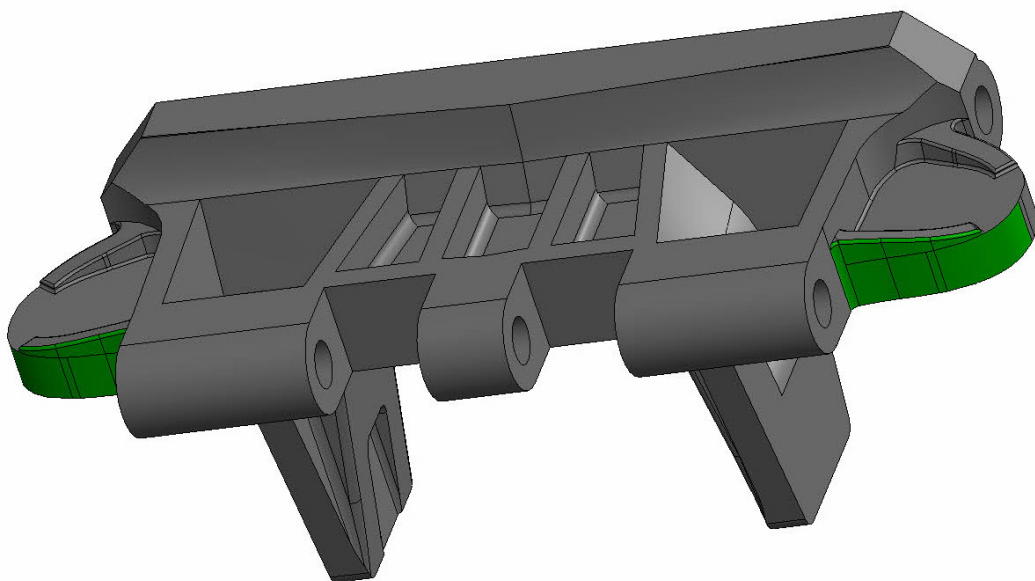
If you do not need the auxiliary areas, you can print an alternate part **03-02\_NO\_BASE**.

# Jagdpanzer 38(t)

## Printing guide



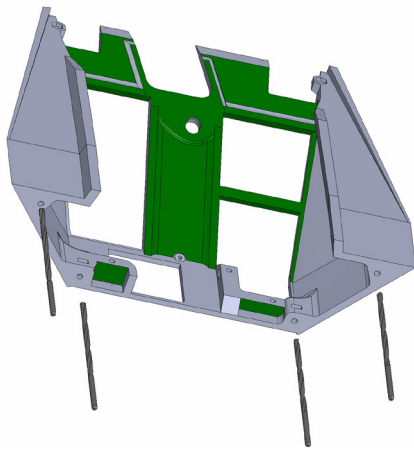
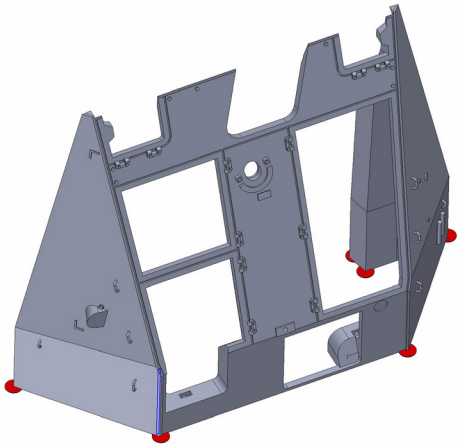
<b>PART Nr.:</b>	<b>03-05</b>
<b>MATERIAL:</b>	ASA, ABS, NYLON, POM
<b>LAYER:</b>	0,1mm
<b>AMOUNT:</b>	203x
<b>SUPPORT:</b>	YES
<b>NOZZLE:</b>	0,25 - 0,3mm
<b>NOTES:</b>	<p>Cut off the auxiliary areas marked in red.</p> <p>Use the support only on the area marked in green !!!</p> <p>If necessary, drill holes with a 0,8mm drill bit.</p>





# Jagdpanzer 38(t)

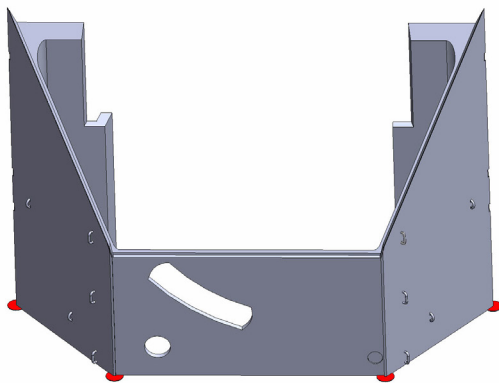
## Printing guide



<b>PART Nr.:</b>	<b>04-01</b>
<b>MATERIAL:</b>	PET(G), CPE, ASA, ABS
<b>LAYER:</b>	0,1 - 0,15mm
<b>AMOUNT:</b>	1x
<b>SUPPORT:</b>	YES
<b>NOZZLE:</b>	0,25 - 0,3mm

**NOTES:**

Use the support only on the area marked in green !!!  
 Drill the screw holes with a 2-2.5mm drill bit.  
 Cut off the auxiliary areas marked in red.  
 If you do not need the auxiliary areas, you can print an alternate part **04-01\_NO\_BASE**.  
 If you don't want to print handles, you can use the alternate part **04-01\_NO\_HANDLES**.  
 You can use part **04-01\_NO\_HINGES** and part **04-01\_HINGE** if you want to print hinges separately.



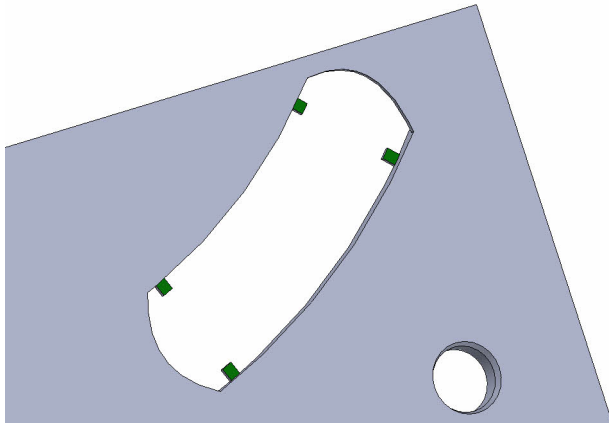
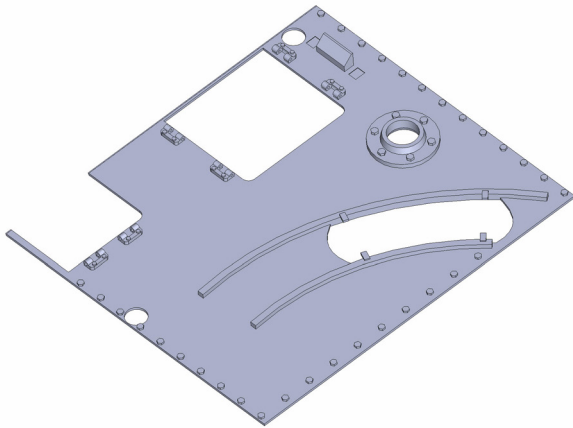
<b>PART Nr.:</b>	<b>04-02</b>
<b>MATERIAL:</b>	PET(G), CPE, ASA, ABS
<b>LAYER:</b>	0,1 - 0,15mm
<b>AMOUNT:</b>	1x
<b>SUPPORT:</b>	NO
<b>NOZZLE:</b>	0,25 - 0,3mm

**NOTES:**

Cut off the auxiliary areas marked in red.  
 If you do not need the auxiliary areas, you can print an alternate part **04-02\_NO\_BASE**.  
 If you don't want to print handles, you can use the alternate part **04-02\_NO\_HANDLES**.

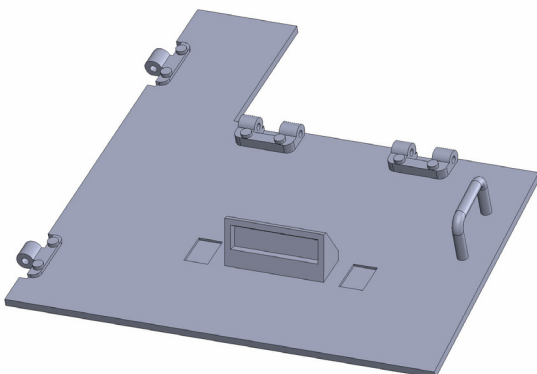
# Jagdpanzer 38(t)

## Printing guide



<b>PART Nr.:</b>	<b>04-03</b>
<b>MATERIAL:</b>	PET(G), CPE, ASA, ABS
<b>LAYER:</b>	0,1 - 0,15mm
<b>AMOUNT:</b>	1x
<b>SUPPORT:</b>	YES
<b>NOZZLE:</b>	0,25 - 0,3mm

<b>NOTES:</b>	Use the support only on 4 small areas marked in green !!!
---------------	---

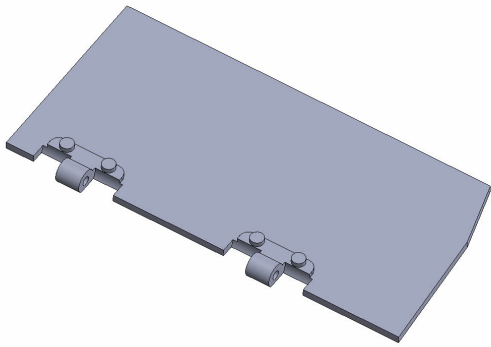


<b>PART Nr.:</b>	<b>04-04</b>
<b>MATERIAL:</b>	PET(G), CPE, ASA, ABS
<b>LAYER:</b>	0,1 - 0,15mm
<b>AMOUNT:</b>	1x
<b>SUPPORT:</b>	NO
<b>NOZZLE:</b>	0,25 - 0,3mm

<b>NOTES:</b>	If you don't want to print handles, you can use the alternate part <b>04-04_NO_HANDLES</b> .
---------------	--

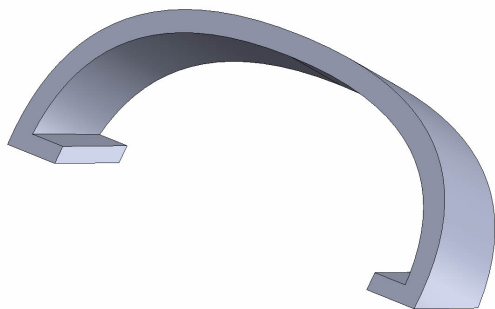
# Jagdpanzer 38(t)

## Printing guide



<b>PART Nr.:</b>	<b>04-05</b>
<b>MATERIAL:</b>	PET(G), CPE, ASA, ABS
<b>LAYER:</b>	0,1 - 0,15mm
<b>AMOUNT:</b>	1x
<b>SUPPORT:</b>	NO
<b>NOZZLE:</b>	0,25 - 0,3mm

<b>NOTES:</b>	
---------------	--

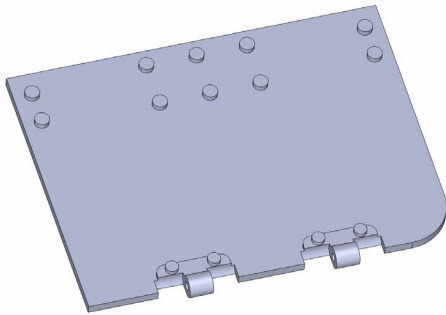


<b>PART Nr.:</b>	<b>04-06</b>
<b>MATERIAL:</b>	PET(G), CPE, ASA, ABS
<b>LAYER:</b>	0,1 - 0,15mm
<b>AMOUNT:</b>	1x
<b>SUPPORT:</b>	NO
<b>NOZZLE:</b>	0,25 - 0,3mm

<b>NOTES:</b>	
---------------	--

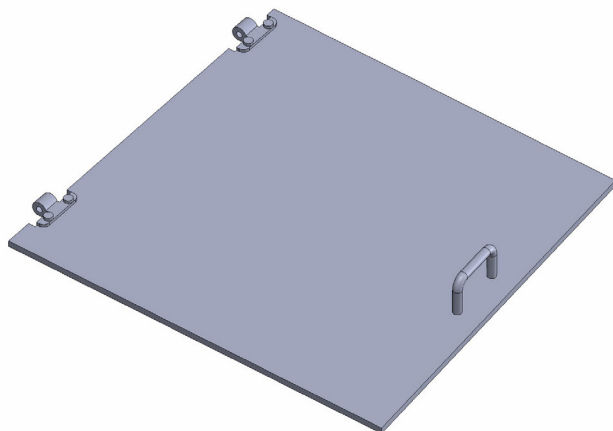
# Jagdpanzer 38(t)

## Printing guide



<b>PART Nr.:</b>	<b>04-07</b>
<b>MATERIAL:</b>	PET(G), CPE, ASA, ABS
<b>LAYER:</b>	0,1 - 0,15mm
<b>AMOUNT:</b>	1x
<b>SUPPORT:</b>	NO
<b>NOZZLE:</b>	0,25 - 0,3mm

NOTES:



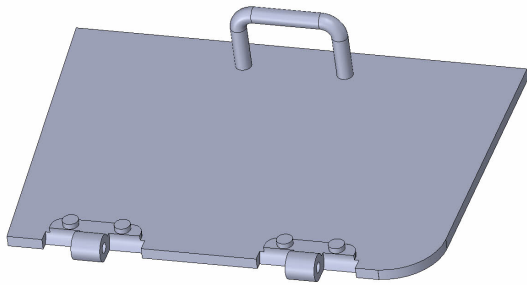
<b>PART Nr.:</b>	<b>04-08</b>
<b>MATERIAL:</b>	PET(G), CPE, ASA, ABS
<b>LAYER:</b>	0,1 - 0,15mm
<b>AMOUNT:</b>	1x
<b>SUPPORT:</b>	NO
<b>NOZZLE:</b>	0,25 - 0,3mm

NOTES:

If you don't want to print handles, you can use the alternate part **04-08\_NO\_HANDLES**.

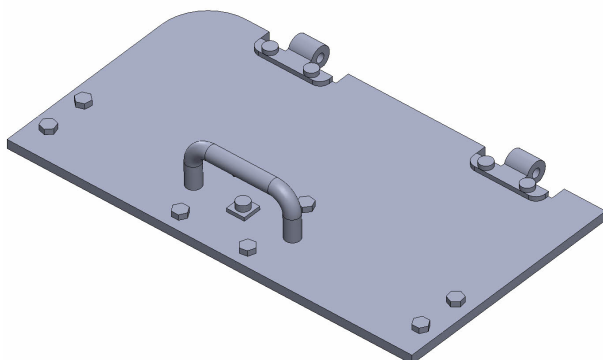
# Jagdpanzer 38(t)

## Printing guide



<b>PART Nr.:</b>	<b>04-09</b>
<b>MATERIAL:</b>	PET(G), CPE, ASA, ABS
<b>LAYER:</b>	0,1 - 0,15mm
<b>AMOUNT:</b>	1x
<b>SUPPORT:</b>	NO
<b>NOZZLE:</b>	0,25 - 0,3mm

**NOTES:** If you don't want to print handles, you can use the alternate part **04-09\_NO\_HANDLES**.



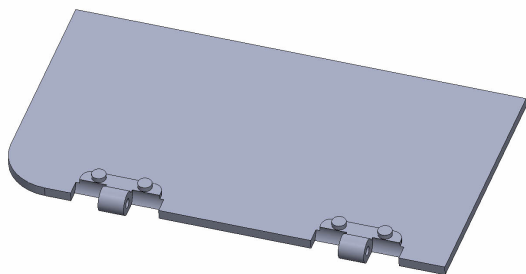
<b>PART Nr.:</b>	<b>04-10</b>
<b>MATERIAL:</b>	PET(G), CPE, ASA, ABS
<b>LAYER:</b>	0,1 - 0,15mm
<b>AMOUNT:</b>	1x
<b>SUPPORT:</b>	NO
<b>NOZZLE:</b>	0,25 - 0,3mm

**NOTES:** If you don't want to print handles, you can use the alternate part **04-10\_NO\_HANDLES**.



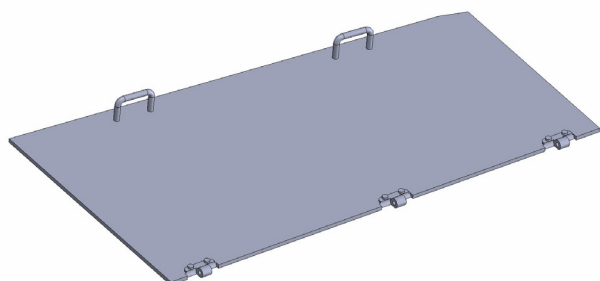
# Jagdpanzer 38(t)

## Printing guide



<b>PART Nr.:</b>	<b>04-11</b>
<b>MATERIAL:</b>	PET(G), CPE, ASA, ABS
<b>LAYER:</b>	0,1 - 0,15mm
<b>AMOUNT:</b>	1x
<b>SUPPORT:</b>	NO
<b>NOZZLE:</b>	0,25 - 0,3mm

NOTES:



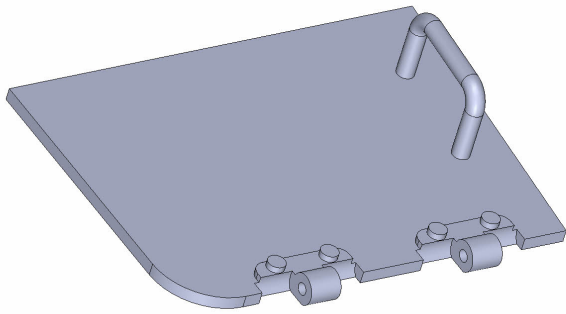
<b>PART Nr.:</b>	<b>04-12</b>
<b>MATERIAL:</b>	PET(G), CPE, ASA, ABS
<b>LAYER:</b>	0,1 - 0,15mm
<b>AMOUNT:</b>	1x
<b>SUPPORT:</b>	NO
<b>NOZZLE:</b>	0,25 - 0,3mm

NOTES:

If you don't want to print handles, you can use the alternate part **04-12\_NO\_HANDLES**.

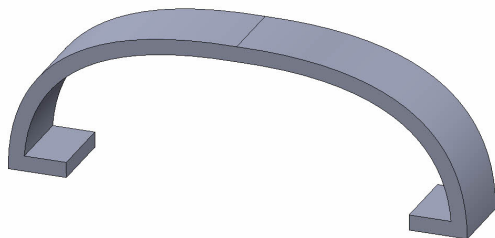
# Jagdpanzer 38(t)

## Printing guide



<b>PART Nr.:</b>	<b>04-13</b>
<b>MATERIAL:</b>	PET(G), CPE, ASA, ABS
<b>LAYER:</b>	0,1 - 0,15mm
<b>AMOUNT:</b>	1x
<b>SUPPORT:</b>	NO
<b>NOZZLE:</b>	0,25 - 0,3mm

**NOTES:** If you don't want to print handles, you can use the alternate part **04-13\_NO\_HANDLES**.

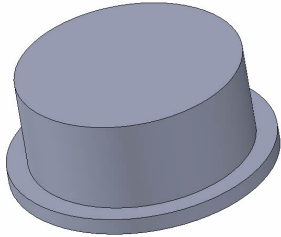


<b>PART Nr.:</b>	<b>04-14</b>
<b>MATERIAL:</b>	PET(G), CPE, ASA, ABS
<b>LAYER:</b>	0,1 - 0,15mm
<b>AMOUNT:</b>	1x
<b>SUPPORT:</b>	NO
<b>NOZZLE:</b>	0,25 - 0,3mm

**NOTES:**

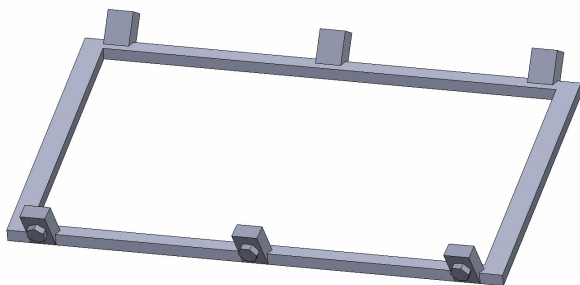
# Jagdpanzer 38(t)

## Printing guide



<b>PART Nr.:</b>	<b>04-15</b>
<b>MATERIAL:</b>	PET(G), CPE, ASA, ABS
<b>LAYER:</b>	0,1 - 0,15mm
<b>AMOUNT:</b>	2x
<b>SUPPORT:</b>	NO
<b>NOZZLE:</b>	0,25 - 0,3mm

**NOTES:**  
The part is identical to the part **01-19**.  
You will need a total of 3 pieces of this part

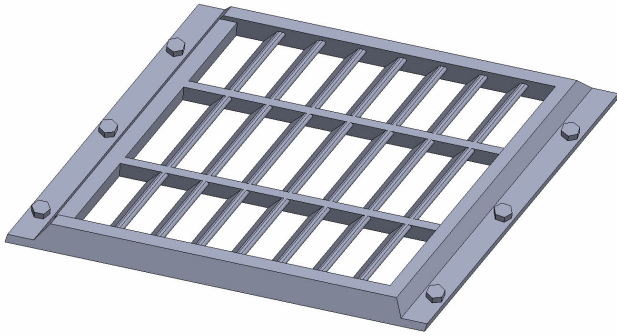


<b>PART Nr.:</b>	<b>04-16A</b>
<b>MATERIAL:</b>	PET(G), CPE, ASA, ABS
<b>LAYER:</b>	0,1 - 0,15mm
<b>AMOUNT:</b>	1x
<b>SUPPORT:</b>	NO
<b>NOZZLE:</b>	0,25 - 0,3mm

**NOTES:**

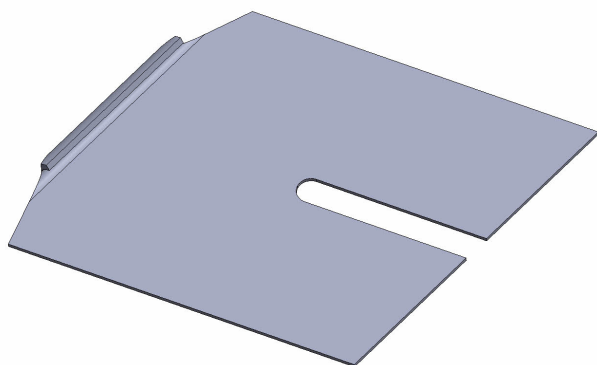
# Jagdpanzer 38(t)

## Printing guide



<b>PART Nr.:</b>	<b>04-16B</b>
<b>MATERIAL:</b>	PET(G), CPE, ASA, ABS
<b>LAYER:</b>	0,1 - 0,15mm
<b>AMOUNT:</b>	1x
<b>SUPPORT:</b>	NO
<b>NOZZLE:</b>	0,25 - 0,3mm

NOTES:

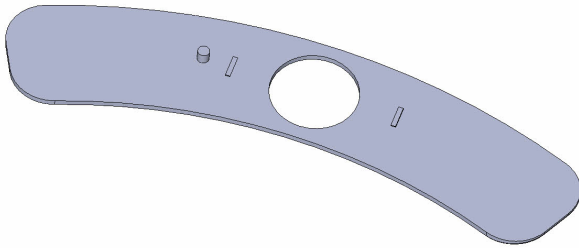


<b>PART Nr.:</b>	<b>04-16C</b>
<b>MATERIAL:</b>	PET(G), CPE, ASA, ABS
<b>LAYER:</b>	0,1 - 0,15mm
<b>AMOUNT:</b>	1x
<b>SUPPORT:</b>	NO
<b>NOZZLE:</b>	0,25 - 0,3mm

NOTES:

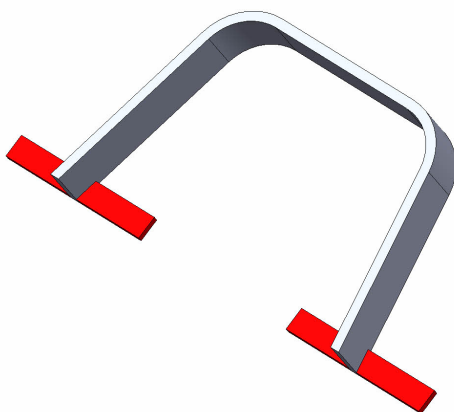
# Jagdpanzer 38(t)

## Printing guide



<b>PART Nr.:</b>	<b>04-17A</b>
<b>MATERIAL:</b>	PET(G), CPE, ASA, ABS
<b>LAYER:</b>	0,1 - 0,15mm
<b>AMOUNT:</b>	1x
<b>SUPPORT:</b>	NO
<b>NOZZLE:</b>	0,25 - 0,3mm

NOTES:



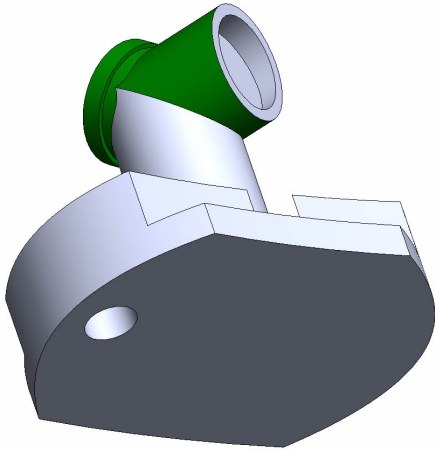
<b>PART Nr.:</b>	<b>04-17B</b>
<b>MATERIAL:</b>	PET(G), CPE, ASA, ABS
<b>LAYER:</b>	0,1 - 0,15mm
<b>AMOUNT:</b>	1x
<b>SUPPORT:</b>	NO
<b>NOZZLE:</b>	0,25 - 0,3mm

NOTES:

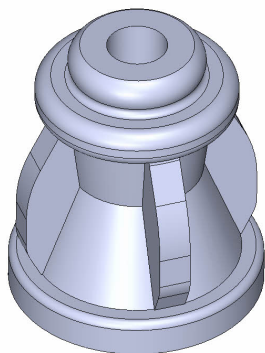
Cut off the auxiliary areas marked in red.  
If you do not need the auxiliary areas, you can print an alternate part **04-017B\_NO\_BASE**.

# Jagdpanzer 38(t)

## Printing guide



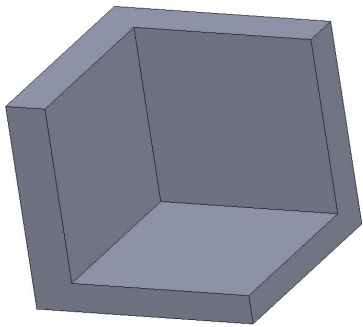
<b>PART Nr.:</b>	<b>04-17C</b>
<b>MATERIAL:</b>	PET(G), CPE, ASA, ABS
<b>LAYER:</b>	0,1 - 0,15mm
<b>AMOUNT:</b>	1x
<b>SUPPORT:</b>	YES
<b>NOZZLE:</b>	0,25 - 0,3mm
<b>NOTES:</b>	Apply the support to areas marked in green.



<b>PART Nr.:</b>	<b>04-18</b>
<b>MATERIAL:</b>	PET(G), CPE, ASA, ABS
<b>LAYER:</b>	0,1 - 0,15mm
<b>AMOUNT:</b>	1x
<b>SUPPORT:</b>	NO
<b>NOZZLE:</b>	0,25 - 0,3mm
<b>NOTES:</b>	

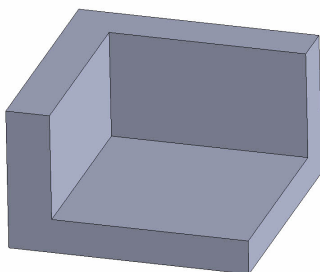
# Jagdpanzer 38(t)

## Printing guide



<b>PART Nr.:</b>	<b>04-19</b>
<b>MATERIAL:</b>	PET(G), CPE, ASA, ABS
<b>LAYER:</b>	0,1 - 0,15mm
<b>AMOUNT:</b>	1x
<b>SUPPORT:</b>	NO
<b>NOZZLE:</b>	0,25 - 0,3mm

NOTES:

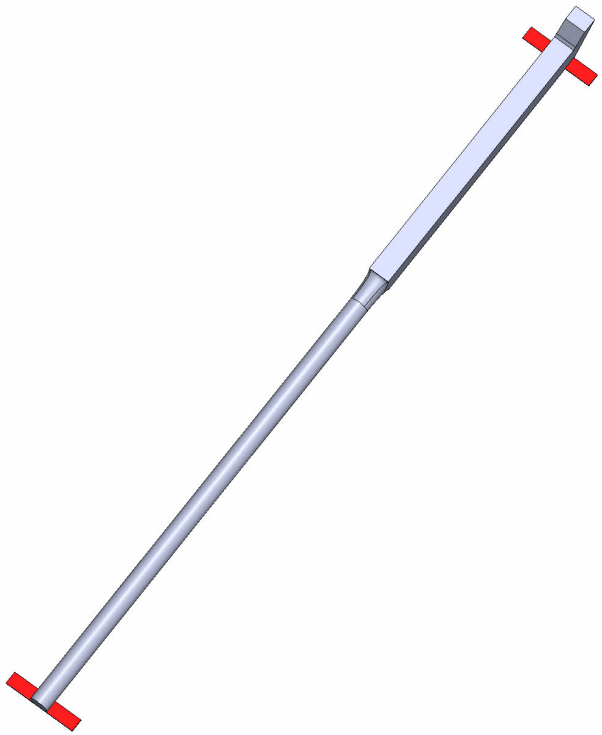


<b>PART Nr.:</b>	<b>04-20</b>
<b>MATERIAL:</b>	PET(G), CPE, ASA, ABS
<b>LAYER:</b>	0,1 - 0,15mm
<b>AMOUNT:</b>	1x
<b>SUPPORT:</b>	NO
<b>NOZZLE:</b>	0,25 - 0,3mm

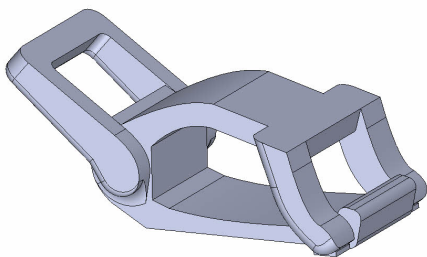
NOTES:

## Jagdpanzer 38(t)

### Printing guide



<b>PART Nr.:</b>	<b>04-21</b>
<b>MATERIAL:</b>	PET(G), CPE, ASA, ABS
<b>LAYER:</b>	0,1 - 0,15mm
<b>AMOUNT:</b>	1x
<b>SUPPORT:</b>	NO
<b>NOZZLE:</b>	0,25 - 0,3mm
<b>NOTES:</b>	Cut off the auxiliary areas marked in red. If you do not need the auxiliary areas, you can print an alternate part <b>04-21_NO_BASE</b> .

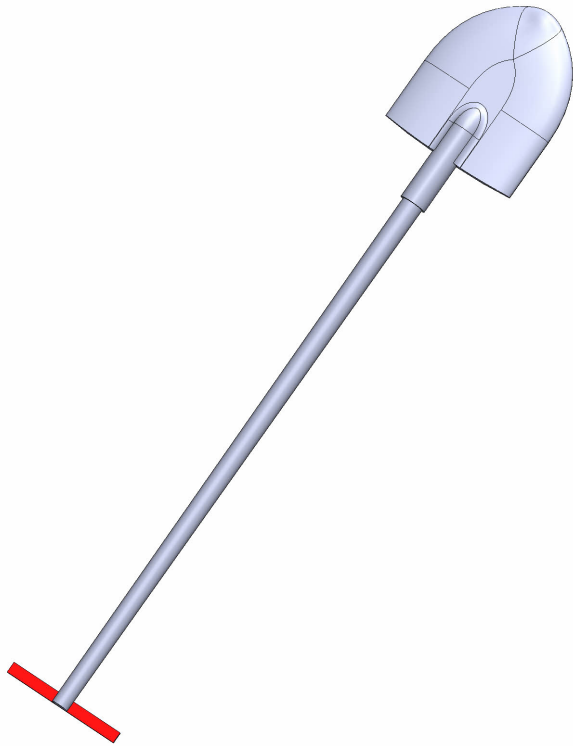


<b>PART Nr.:</b>	<b>04-22</b>
<b>MATERIAL:</b>	PET(G), CPE, ASA, ABS
<b>LAYER:</b>	0,1 - 0,15mm
<b>AMOUNT:</b>	2x
<b>SUPPORT:</b>	NO
<b>NOZZLE:</b>	0,25 - 0,3mm
<b>NOTES:</b>	The part is identical to the part <b>01-22</b> . You will need a total of 5 pieces of this part

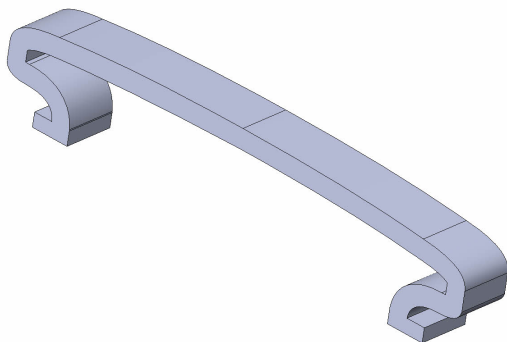


## Jagdpanzer 38(t)

### Printing guide



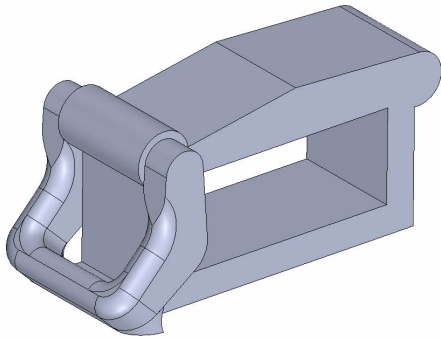
<b>PART Nr.:</b>	<b>04-23</b>
<b>MATERIAL:</b>	PET(G), CPE, ASA, ABS
<b>LAYER:</b>	0,1 - 0,15mm
<b>AMOUNT:</b>	1x
<b>SUPPORT:</b>	NO
<b>NOZZLE:</b>	0,25 - 0,3mm
<b>NOTES:</b>	Cut off the auxiliary areas marked in red. If you do not need the auxiliary areas, you can print an alternate part <b>04-23_NO_BASE</b> .



<b>PART Nr.:</b>	<b>04-24</b>
<b>MATERIAL:</b>	PET(G), CPE, ASA, ABS
<b>LAYER:</b>	0,1 - 0,15mm
<b>AMOUNT:</b>	1x
<b>SUPPORT:</b>	NO
<b>NOZZLE:</b>	0,25 - 0,3mm
<b>NOTES:</b>	

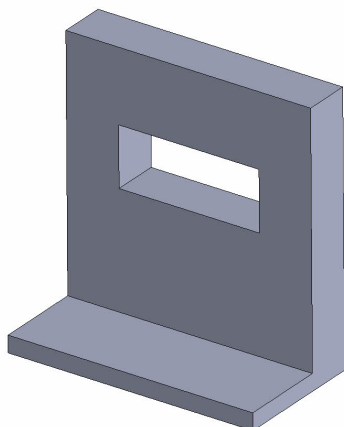
# Jagdpanzer 38(t)

## Printing guide



<b>PART Nr.:</b>	<b>04-25</b>
<b>MATERIAL:</b>	PET(G), CPE, ASA, ABS
<b>LAYER:</b>	0,1 - 0,15mm
<b>AMOUNT:</b>	1x
<b>SUPPORT:</b>	NO
<b>NOZZLE:</b>	0,25 - 0,3mm

NOTES:

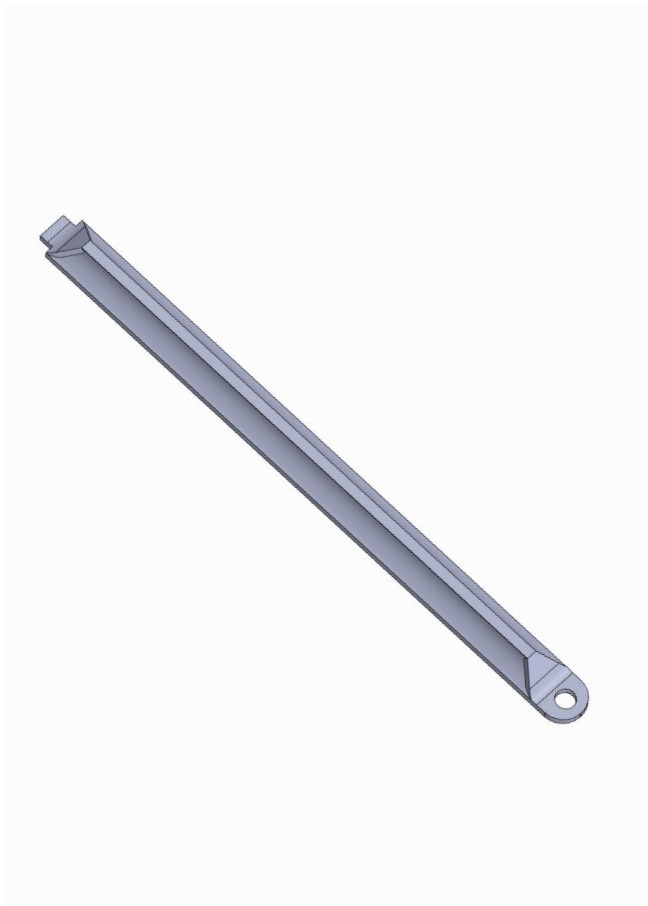


<b>PART Nr.:</b>	<b>04-26</b>
<b>MATERIAL:</b>	PET(G), CPE, ASA, ABS
<b>LAYER:</b>	0,1 - 0,15mm
<b>AMOUNT:</b>	1x
<b>SUPPORT:</b>	NO
<b>NOZZLE:</b>	0,25 - 0,3mm

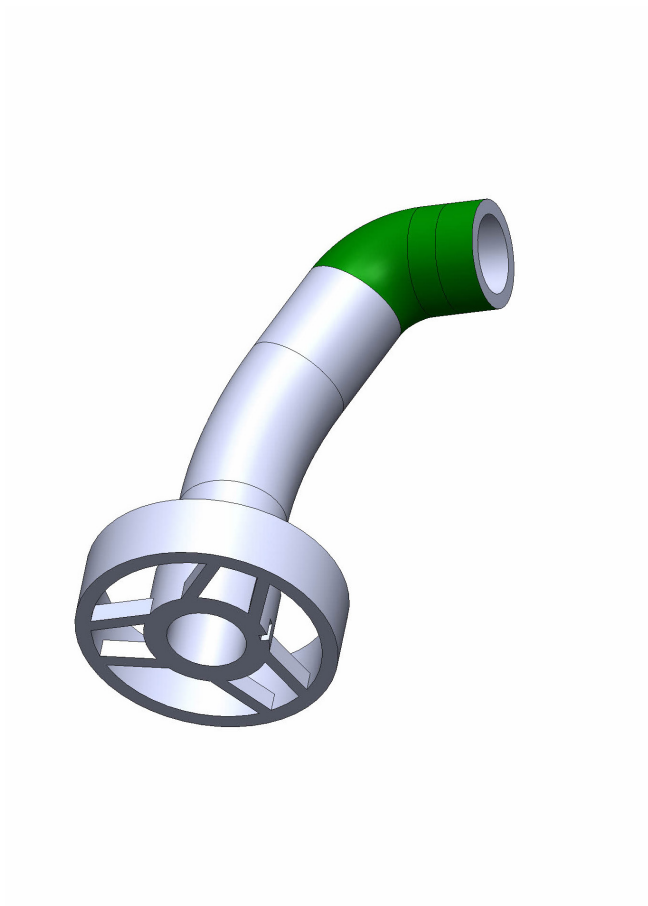
NOTES:

## Jagdpanzer 38(t)

### Printing guide



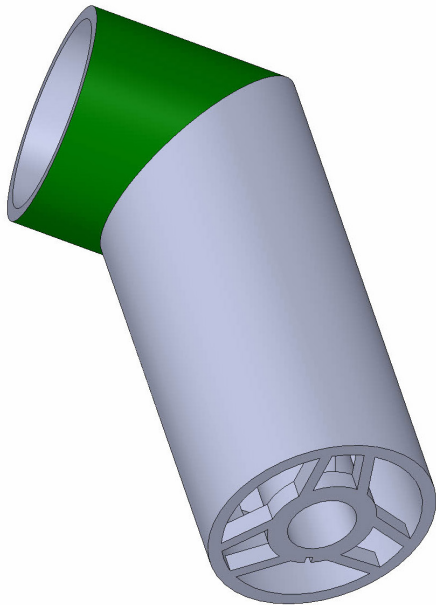
<b>PART Nr.:</b>	<b>04-27</b>
<b>MATERIAL:</b>	PET(G), CPE, ASA, ABS
<b>LAYER:</b>	0,1 - 0,15mm
<b>AMOUNT:</b>	1x
<b>SUPPORT:</b>	NO
<b>NOZZLE:</b>	0,25 - 0,3mm
<b>NOTES:</b>	



<b>PART Nr.:</b>	<b>04-28</b>
<b>MATERIAL:</b>	PET(G), CPE, ASA, ABS
<b>LAYER:</b>	0,1 - 0,15mm
<b>AMOUNT:</b>	1x
<b>SUPPORT:</b>	YES
<b>NOZZLE:</b>	0,25 - 0,3mm
<b>NOTES:</b>	<p><b>Use the support only on the area marked in green!!!</b> Do not use supports on the interior surfaces of the part.</p> <p>It is recommended to print the part from ASA or ABS for the possibility of very strong bonding using acetone.</p>

## Jagdpanzer 38(t)

### Printing guide



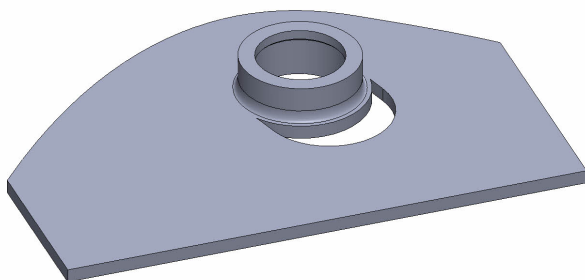
<b>PART Nr.:</b>	<b>04-29</b>
<b>MATERIAL:</b>	PET(G), CPE, ASA, ABS
<b>LAYER:</b>	0,1 - 0,15mm
<b>AMOUNT:</b>	1x
<b>SUPPORT:</b>	YES
<b>NOZZLE:</b>	0,25 - 0,3mm

**NOTES:**

**Use the support only on the area marked in green!!!**

Do not use supports on the interior surfaces of the part.

It is recommended to print the part from ASA or ABS for the possibility of very strong bonding using acetone.



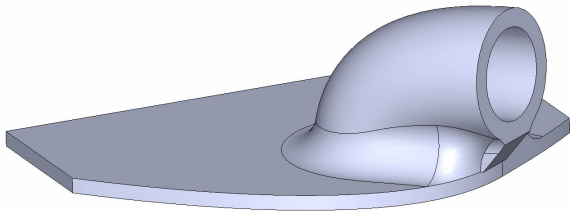
<b>PART Nr.:</b>	<b>04-30</b>
<b>MATERIAL:</b>	PET(G), CPE, ASA, ABS
<b>LAYER:</b>	0,1 - 0,15mm
<b>AMOUNT:</b>	1x
<b>SUPPORT:</b>	NO
<b>NOZZLE:</b>	0,25 - 0,3mm

**NOTES:**

It is recommended to print the part from ASA or ABS for the possibility of very strong bonding using acetone.

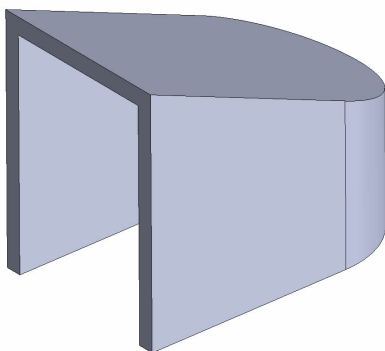
# Jagdpanzer 38(t)

## Printing guide



<b>PART Nr.:</b>	<b>04-31</b>
<b>MATERIAL:</b>	PET(G), CPE, ASA, ABS
<b>LAYER:</b>	0,1 - 0,15mm
<b>AMOUNT:</b>	1x
<b>SUPPORT:</b>	NO
<b>NOZZLE:</b>	0,25 - 0,3mm

NOTES:

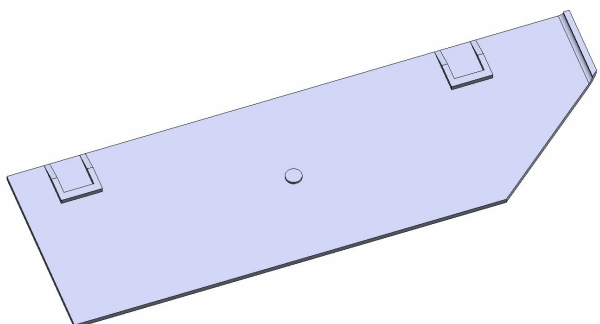


<b>PART Nr.:</b>	<b>04-32</b>
<b>MATERIAL:</b>	PET(G), CPE, ASA, ABS
<b>LAYER:</b>	0,1 - 0,15mm
<b>AMOUNT:</b>	1x
<b>SUPPORT:</b>	NO
<b>NOZZLE:</b>	0,25 - 0,3mm

NOTES:

# Jagdpanzer 38(t)

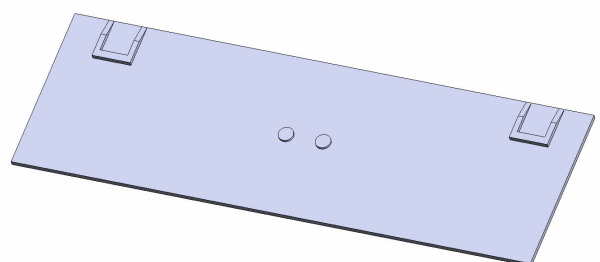
## Printing guide



<b>PART Nr.:</b>	<b>04-33</b>
<b>MATERIAL:</b>	PET(G), CPE, ASA, ABS
<b>LAYER:</b>	0,1 - 0,15mm
<b>AMOUNT:</b>	1x
<b>SUPPORT:</b>	NO
<b>NOZZLE:</b>	0,25 - 0,3mm

**NOTES:**

It is recommended to print the part from ASA or ABS for the possibility of very strong bonding using acetone.



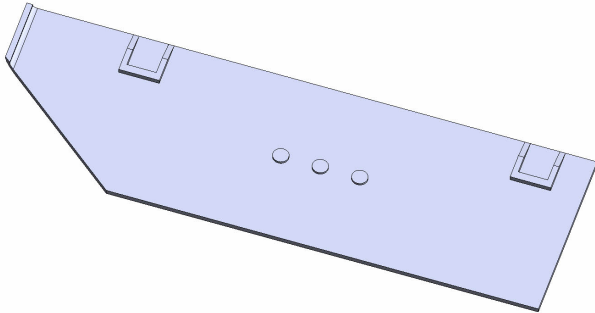
<b>PART Nr.:</b>	<b>04-34</b>
<b>MATERIAL:</b>	PET(G), CPE, ASA, ABS
<b>LAYER:</b>	0,1 - 0,15mm
<b>AMOUNT:</b>	1x
<b>SUPPORT:</b>	NO
<b>NOZZLE:</b>	0,25 - 0,3mm

**NOTES:**

It is recommended to print the part from ASA or ABS for the possibility of very strong bonding using acetone.

# Jagdpanzer 38(t)

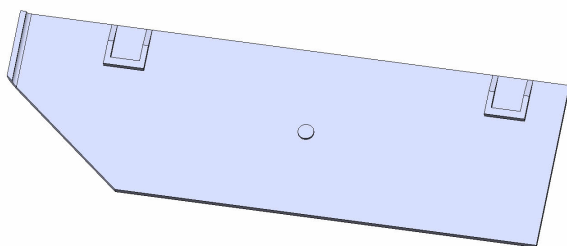
## Printing guide



<b>PART Nr.:</b>	<b>04-35</b>
<b>MATERIAL:</b>	PET(G), CPE, ASA, ABS
<b>LAYER:</b>	0,1 - 0,15mm
<b>AMOUNT:</b>	1x
<b>SUPPORT:</b>	NO
<b>NOZZLE:</b>	0,25 - 0,3mm

**NOTES:**

It is recommended to print the part from ASA or ABS for the possibility of very strong bonding using acetone.



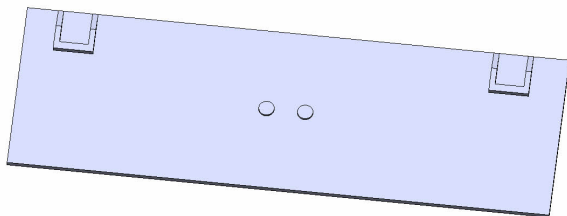
<b>PART Nr.:</b>	<b>04-36</b>
<b>MATERIAL:</b>	PET(G), CPE, ASA, ABS
<b>LAYER:</b>	0,1 - 0,15mm
<b>AMOUNT:</b>	1x
<b>SUPPORT:</b>	NO
<b>NOZZLE:</b>	0,25 - 0,3mm

**NOTES:**

It is recommended to print the part from ASA or ABS for the possibility of very strong bonding using acetone.

# Jagdpanzer 38(t)

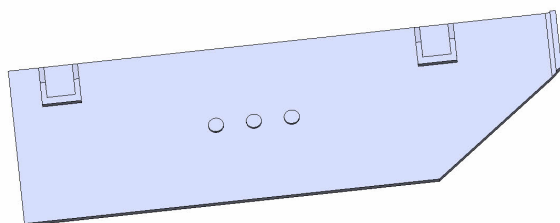
## Printing guide



<b>PART Nr.:</b>	<b>04-37</b>
<b>MATERIAL:</b>	PET(G), CPE, ASA, ABS
<b>LAYER:</b>	0,1 - 0,15mm
<b>AMOUNT:</b>	1x
<b>SUPPORT:</b>	NO
<b>NOZZLE:</b>	0,25 - 0,3mm

**NOTES:**

It is recommended to print the part from ASA or ABS for the possibility of very strong bonding using acetone.



<b>PART Nr.:</b>	<b>04-38</b>
<b>MATERIAL:</b>	PET(G), CPE, ASA, ABS
<b>LAYER:</b>	0,1 - 0,15mm
<b>AMOUNT:</b>	1x
<b>SUPPORT:</b>	NO
<b>NOZZLE:</b>	0,25 - 0,3mm

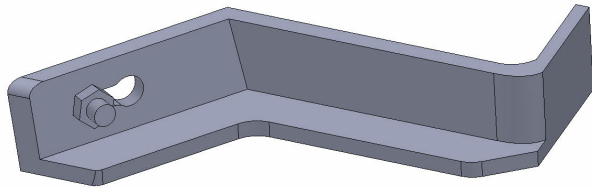
**NOTES:**

It is recommended to print the part from ASA or ABS for the possibility of very strong bonding using acetone.



# Jagdpanzer 38(t)

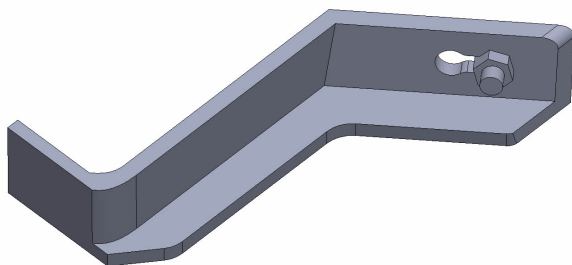
## Printing guide



<b>PART Nr.:</b>	<b>04-39</b>
<b>MATERIAL:</b>	PET(G), CPE, ASA, ABS
<b>LAYER:</b>	0,1 - 0,15mm
<b>AMOUNT:</b>	1x
<b>SUPPORT:</b>	NO
<b>NOZZLE:</b>	0,25 - 0,3mm

**NOTES:**

It is recommended to print the part from ASA or ABS for the possibility of very strong bonding using acetone.



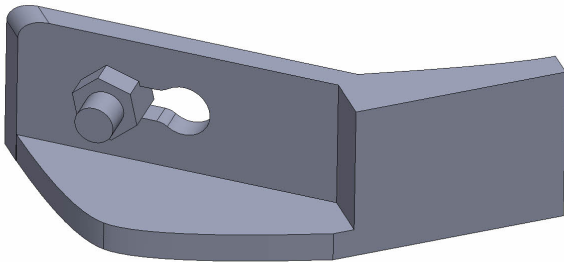
<b>PART Nr.:</b>	<b>04-40</b>
<b>MATERIAL:</b>	PET(G), CPE, ASA, ABS
<b>LAYER:</b>	0,1 - 0,15mm
<b>AMOUNT:</b>	1x
<b>SUPPORT:</b>	NO
<b>NOZZLE:</b>	0,25 - 0,3mm

**NOTES:**

It is recommended to print the part from ASA or ABS for the possibility of very strong bonding using acetone.

## Jagdpanzer 38(t)

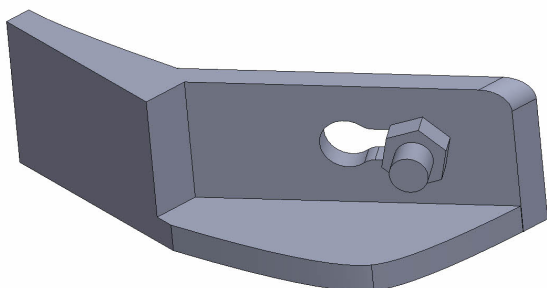
### Printing guide



<b>PART Nr.:</b>	<b>04-41</b>
<b>MATERIAL:</b>	PET(G), CPE, ASA, ABS
<b>LAYER:</b>	0,1 - 0,15mm
<b>AMOUNT:</b>	5x
<b>SUPPORT:</b>	NO
<b>NOZZLE:</b>	0,25 - 0,3mm

**NOTES:**

It is recommended to print the part from ASA or ABS for the possibility of very strong bonding using acetone.



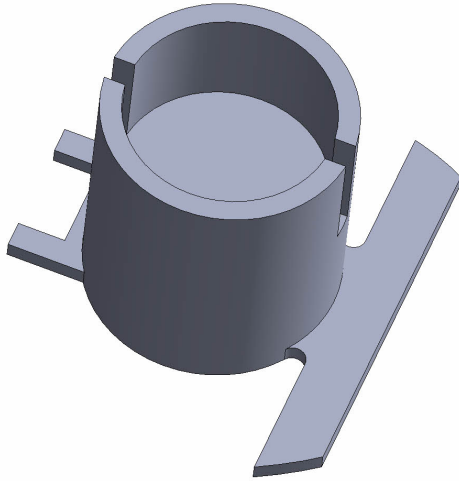
<b>PART Nr.:</b>	<b>04-42</b>
<b>MATERIAL:</b>	PET(G), CPE, ASA, ABS
<b>LAYER:</b>	0,1 - 0,15mm
<b>AMOUNT:</b>	5x
<b>SUPPORT:</b>	NO
<b>NOZZLE:</b>	0,25 - 0,3mm

**NOTES:**

It is recommended to print the part from ASA or ABS for the possibility of very strong bonding using acetone.

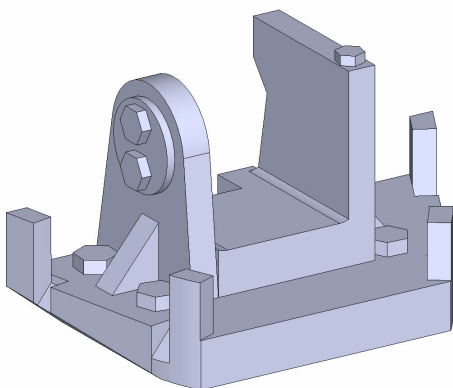
# Jagdpanzer 38(t)

## Printing guide



<b>PART Nr.:</b>	<b>04-43A</b>
<b>MATERIAL:</b>	PET(G), CPE, ASA, ABS
<b>LAYER:</b>	0,1 - 0,15mm
<b>AMOUNT:</b>	1x
<b>SUPPORT:</b>	NO
<b>NOZZLE:</b>	0,25 - 0,3mm

NOTES:

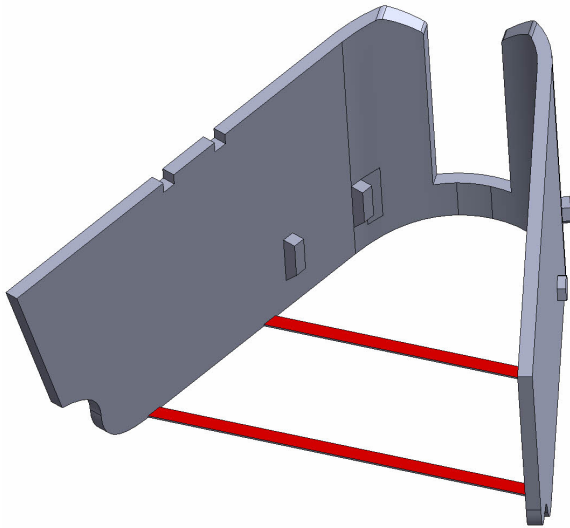


<b>PART Nr.:</b>	<b>04-43B</b>
<b>MATERIAL:</b>	PET(G), CPE, ASA, ABS
<b>LAYER:</b>	0,1 - 0,15mm
<b>AMOUNT:</b>	1x
<b>SUPPORT:</b>	NO
<b>NOZZLE:</b>	0,25 - 0,3mm

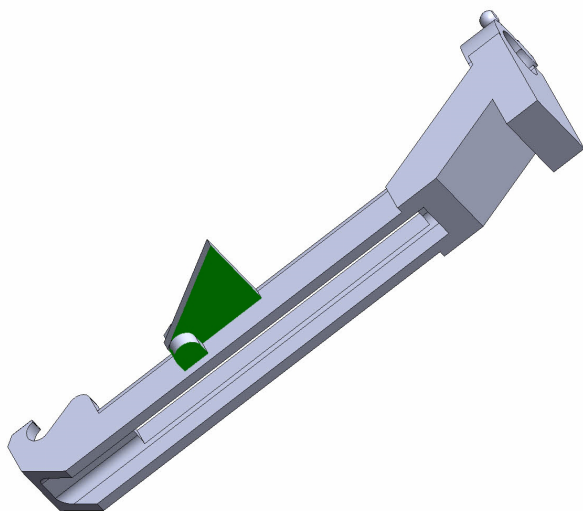
NOTES:

# Jagdpanzer 38(t)

## Printing guide



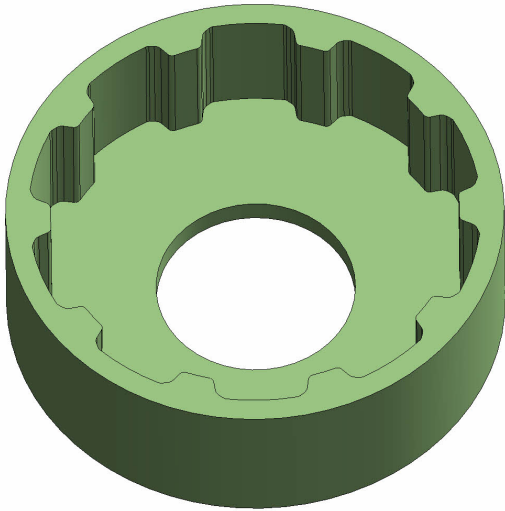
<b>PART Nr.:</b>	<b>04-43C</b>
<b>MATERIAL:</b>	PET(G), CPE, ASA, ABS
<b>LAYER:</b>	0,1 - 0,15mm
<b>AMOUNT:</b>	1x
<b>SUPPORT:</b>	NO
<b>NOZZLE:</b>	0,25 - 0,3mm
<b>NOTES:</b>	Cut off the auxiliary areas marked in red. If you do not need the auxiliary areas, you can print an alternate part <b>04-43C_NO_BASE</b> .



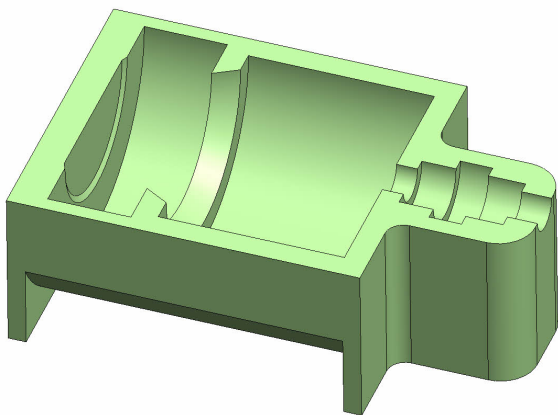
<b>PART Nr.:</b>	<b>04-43D</b>
<b>MATERIAL:</b>	PET(G), CPE, ASA, ABS
<b>LAYER:</b>	0,1 - 0,15mm
<b>AMOUNT:</b>	1x
<b>SUPPORT:</b>	YES
<b>NOZZLE:</b>	0,25 - 0,3mm
<b>NOTES:</b>	Apply the support to areas marked in green.

# Jagdpanzer 38(t)

## Printing guide



<b>PART Nr.:</b>	<b>JIG-01</b>
<b>MATERIAL:</b>	PET(G), CPE, ASA, ABS
<b>LAYER:</b>	0,1 - 0,2mm
<b>AMOUNT:</b>	1x
<b>SUPPORT:</b>	NO
<b>NOZZLE:</b>	0,25 - 0,4mm
<b>NOTES:</b>	Use for comfortable and accurate assembly of the wheel axle.



<b>PART Nr.:</b>	<b>JIG-02</b>
<b>MATERIAL:</b>	PET(G), CPE, ASA, ABS
<b>LAYER:</b>	0,1 - 0,2mm
<b>AMOUNT:</b>	1x
<b>SUPPORT:</b>	NO
<b>NOZZLE:</b>	0,25 - 0,4mm
<b>NOTES:</b>	Use for comfortable and accurate assembly of the wheel axle.

