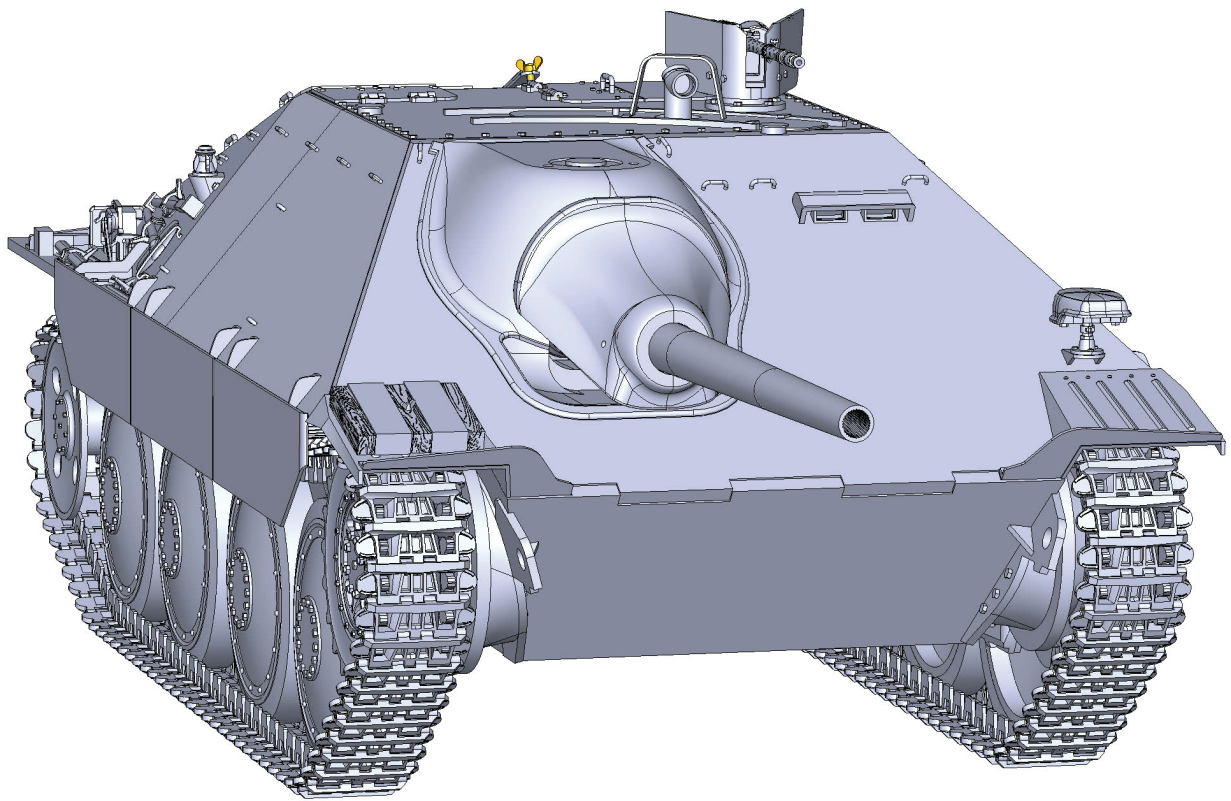


# Jagdpanzer 38 (t) Hetzer

## Printing Guide



1/6 scale RC model by  **WARPRINTS**

# Jagdpanzer 38(t)

## Printing guide

**!!! WARNING - you need 3D printer with at least 350x350x350mm build area !!!**  
(350x350x350 minimum, 400x400x350 recommended)

**You may need a spool with more than 1kg of filament for some of the big body parts.**

**Calibrate the printer as best as possible, it is necessary to get the most accurate dimensions.**

For calibration tips, visit our forum:

<https://forum.warprints.xyz>

For surface treatment, we recommend XTC-3D diluted with technical alcohol (2:1) in favor of XTC-3D

We do not recommend printing using PLA due to low melting point nor HD PLA for dimensional instability.

If possible, try to print as many parts from ASA or ABS as possible.

Advantages include high mechanical and thermal resistance and the possibility of solid gluing with acetone.

The kit is divided into chapters. Assemblies from individual chapters can be uninstalled from the model at any time in case of need of service or maintenance.

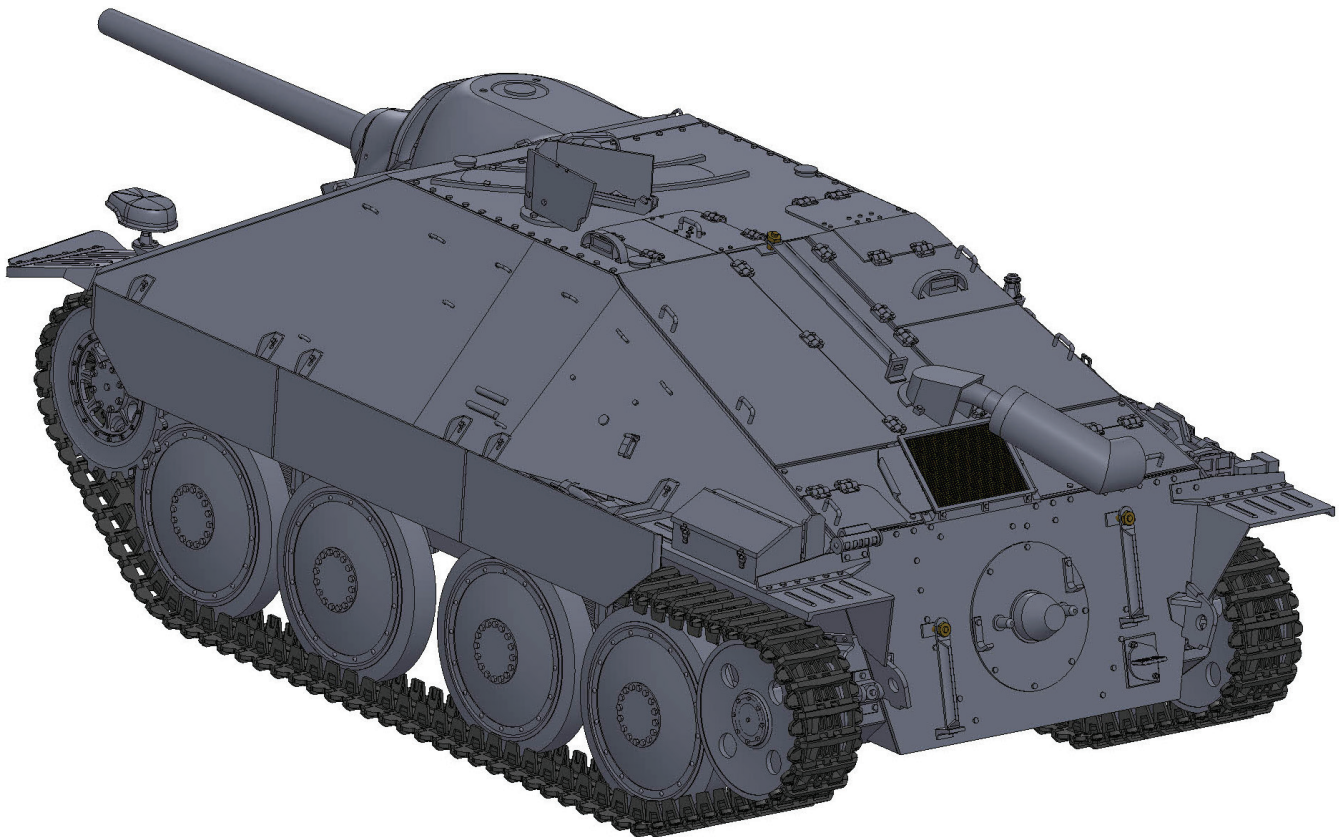
**Never bond the complete subassemblies 01 to 04 (excepting part 02-14) !!!**

The tables contain a list of all necessary parts and basic printing information.

For more information on printing individual parts, continue below. If you have additional questions about printing, please contact us in our forum.

**“Nozzle” indicates the maximum nozzle diameter for printing the part.** Parts with a diameter of 0.6mm can also be printed with a 0.4mm nozzle.

The use of a 0.6mm nozzle for printing parts designed for a 0.4mm nozzle can result in omission of details or omission of important elements.



# Jagdpanzer 38(t)

## Printing guide

PART	amount	support	nozzle
01-01	1x	YES	0,4mm
01-02	1x	NO	0,4mm
01-03	1x	NO	0,4mm
01-04A	1x	NO	0,4mm
01-04B	1x	NO	0,4mm
01-05A	1x	NO	0,4mm
01-05B	1x	NO	0,4mm
01-06	1x	NO	0,4mm
01-07	1x	NO	0,4mm
01-08	1x	NO	0,4mm
01-09	1x	NO	0,4mm
01-10	1x	NO	0,4mm
01-11	1x	NO	0,4mm
01-12	1x	NO	0,4mm
01-13A	1x	NO	0,4mm
01-13B	1x	NO	0,4mm
01-13C	1x	NO	0,4mm
01-13D	1x	NO	0,4mm
01-13E	1x	NO	0,4mm
01-13F	1x	NO	0,4mm
01-14	1x	NO	0,4mm
01-15	1x	NO	0,4mm
01-16	1x	NO	0,4mm
01-17	1x	NO	0,4mm
01-18	1x	NO	0,4mm
01-19	1x	NO	0,4mm
01-20A	1x	NO	0,4mm
01-20B	1x	NO	0,4mm
01-20C	1x	NO	0,4mm
01-21	1x	NO	0,4mm
01-22	3x	NO	0,4mm
01-23	1x	NO	0,4mm

PART	amount	support	nozzle
02-01	1x	YES	0,4mm
02-02	1x	NO	0,4mm
02-03	2x	NO	0,4mm
02-04	1x	NO	0,4mm
02-05	1x	NO	0,4mm
02-06	1x	NO	0,4mm
02-07	1x	NO	0,4mm
02-08	1x	NO	0,4mm
02-09	1x	NO	0,4mm
02-10	1x	NO	0,4mm
02-11	1x	NO	0,4mm
02-12	1x	NO	0,4mm

PART	amount	support	nozzle
01-24	1x	NO	0,4mm
01-25	1x	NO	0,4mm
01-26A	1x	NO	0,4mm
01-26B	1x	NO	0,4mm
01-26C	1x	NO	0,4mm
01-26D	2x	NO	0,4mm
01-27A	1x	NO	0,4mm
01-27B	1x	NO	0,4mm
01-28A	1x	NO	0,4mm
01-28B	1x	NO	0,4mm
01-28C	1x	NO	0,4mm
01-29	2x	NO	0,4mm
01-30	1x	NO	0,4mm
01-31	2x	NO	0,4mm
01-32	2x	YES	0,4mm
01-33	2x	NO	0,4mm
01-34	2x	NO	0,4mm
01-35	2x	NO	0,4mm
01-36	2x	YES	0,4mm
01-37	2x	NO	0,4mm
01-38A	1x	NO	0,4mm
01-38B	1x	NO	0,4mm
01-39	8x	NO	0,4mm
01-40	8x	NO	0,4mm
01-41A	8x	NO	0,4mm
01-41B	8x	NO	0,4mm
01-42A	8x	NO	0,4mm
01-42B	8x	NO	0,4mm
01-43A	4x	YES	0,4mm
01-43B	4x	NO	0,4mm
01-44	8x	NO	0,4mm
01-45	2x	NO	0,4mm

PART	amount	support	nozzle
02-13A	1x	NO	0,4mm
02-13B	1x	NO	0,4mm
02-14	1x	NO	0,4mm
02-15	1x	NO	0,4mm
02-16	1x	NO	0,4mm
02-17	1x	NO	0,4mm

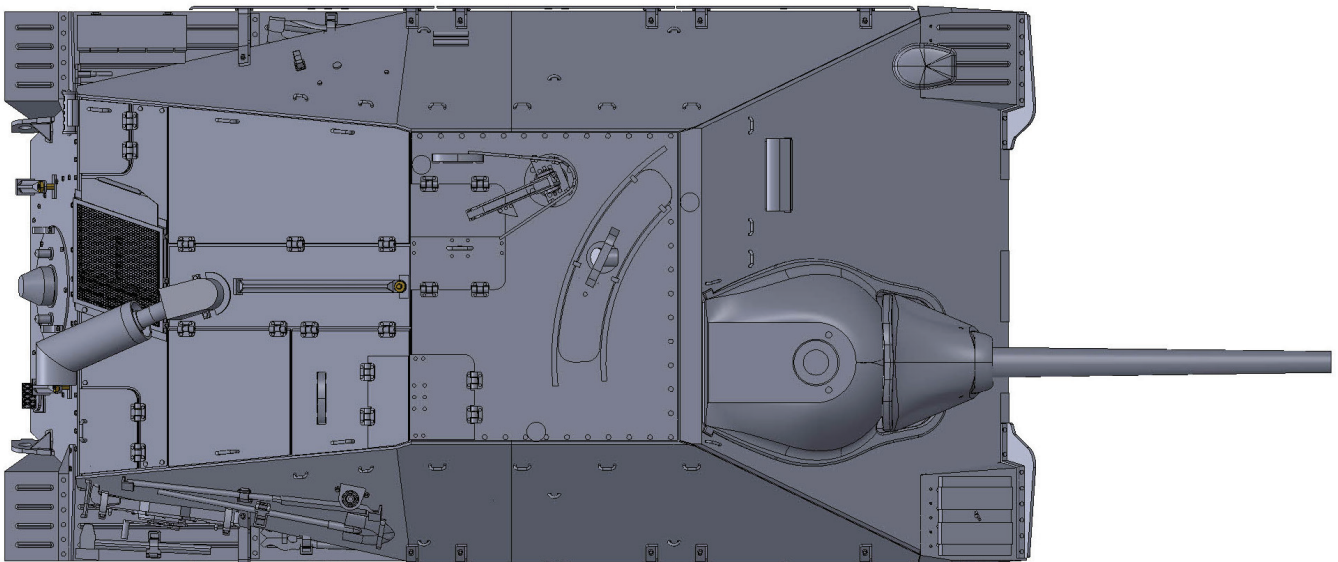
PART	amount	support	nozzle
03-01	206x	YES	0,4mm
JIG	1x	NO	0,4mm

# Jagdpanzer 38(t)

## Printing guide

PART	amount	support	nozzle
04-01	1x	YES	0,4mm
04-02	1x	NO	0,4mm
04-03	1x	YES	0,4mm
04-04	1x	NO	0,4mm
04-05	1x	NO	0,4mm
04-06	1x	NO	0,4mm
04-07	1x	NO	0,4mm
04-08	1x	NO	0,4mm
04-09	1x	NO	0,4mm
04-10	1x	NO	0,4mm
04-11	1x	NO	0,4mm
04-12	1x	NO	0,4mm
04-13	1x	NO	0,4mm
04-14	1x	NO	0,4mm
04-15	2x	NO	0,4mm
04-16A	1x	NO	0,4mm
04-16B	1x	NO	0,4mm
04-16C	1x	NO	0,4mm
04-17A	1x	NO	0,4mm
04-17B	1x	NO	0,4mm
04-17C	1x	NO	0,4mm
04-17D	1x	NO	0,4mm
04-18	1x	NO	0,4mm
04-19	1x	NO	0,4mm
04-20	1x	NO	0,4mm
04-21	1x	NO	0,4mm
04-22	2x	NO	0,4mm
04-23	1x	NO	0,4mm

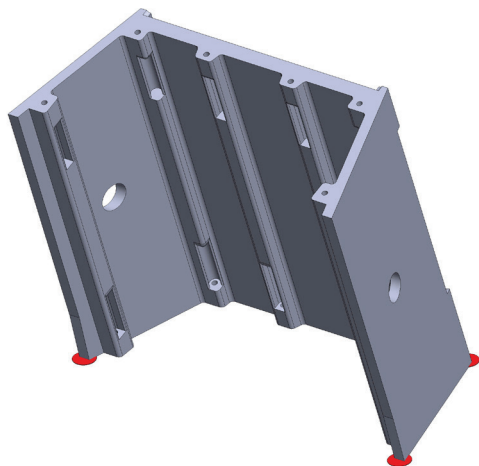
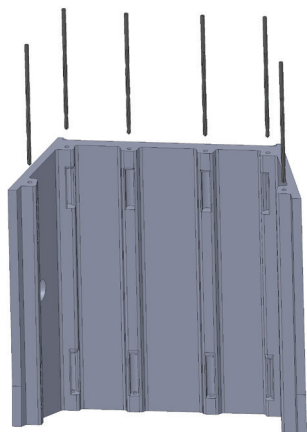
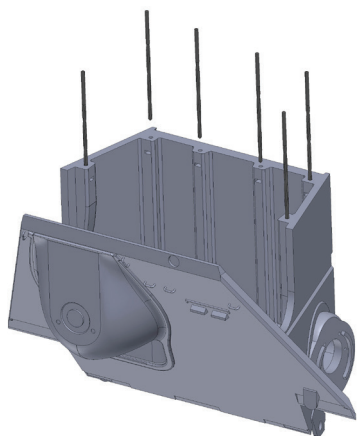
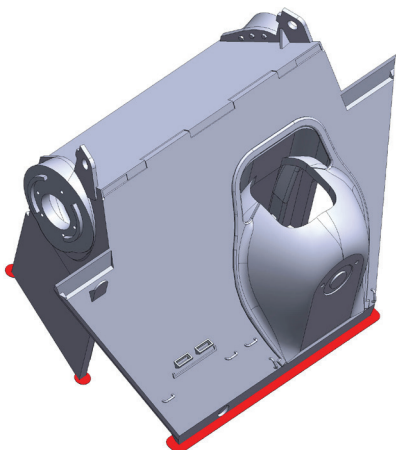
PART	amount	support	nozzle
04-24	1x	NO	0,4mm
04-25	1x	NO	0,4mm
04-26	1x	NO	0,4mm
04-27	1x	NO	0,4mm
04-28	1x	YES	0,4mm
04-29	1x	YES	0,4mm
04-30	1x	NO	0,4mm
04-31	1x	NO	0,4mm
04-32	1x	NO	0,4mm
04-33	1x	NO	0,4mm
04-34	1x	NO	0,4mm
04-35	1x	NO	0,4mm
04-36	1x	NO	0,4mm
04-37	1x	NO	0,4mm
04-38	1x	NO	0,4mm
04-39	1x	NO	0,4mm
04-40	1x	NO	0,4mm
04-41	5x	NO	0,4mm
04-42	5x	NO	0,4mm
04-43	1x	NO	0,4mm
04-44	1x	NO	0,4mm
04-45	1x	NO	0,4mm
04-46	1x	NO	0,4mm
04-47	1x	NO	0,4mm
MG34_1A	1x	NO	0,3mm
MG34_1B	1x	NO	0,3mm
MG34_2	1x	NO	0,3mm





# Jagdpanzer 38(t)

## Printing guide



<b>PART Nr.:</b>	<b>01-01</b>
<b>MATERIAL:</b>	PET(G), CPE, ASA275
<b>LAYER:</b>	0,15 - 0,25mm
<b>AMOUNT:</b>	1x
<b>SUPPORT:</b>	NO
<b>NOZZLE:</b>	0,4mm

**NOTES:**

Drill the screw holes with a 4-4.5mm drill bit.

Cut off the auxiliary areas marked in red.

If you do not need the auxiliary areas, you can print an alternate part

**01-01\_NO\_BASE.**

If you do not want to print handles, you can use an alternative part

**01-01\_NO\_HANDLES.**

<b>PART Nr.:</b>	<b>01-02</b>
<b>MATERIAL:</b>	PET(G), CPE, ASA275
<b>LAYER:</b>	0,2 - 0,4mm
<b>AMOUNT:</b>	1x
<b>SUPPORT:</b>	NO
<b>NOZZLE:</b>	0,4 - 0,6mm

**NOTES:**

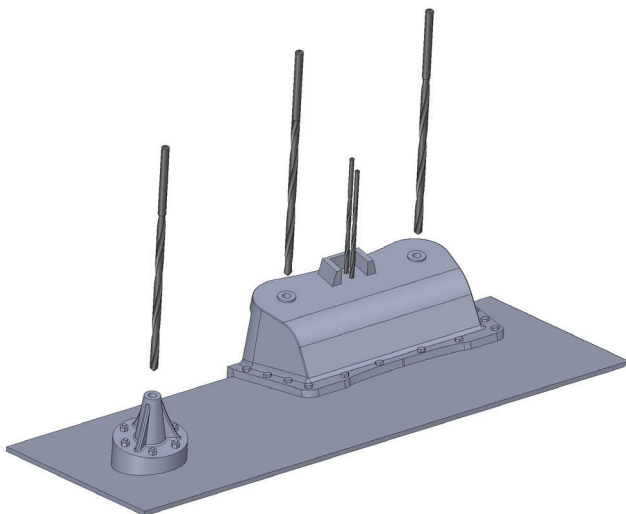
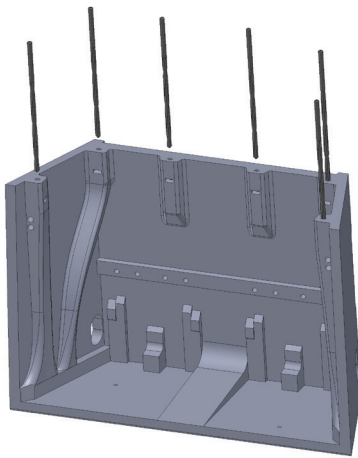
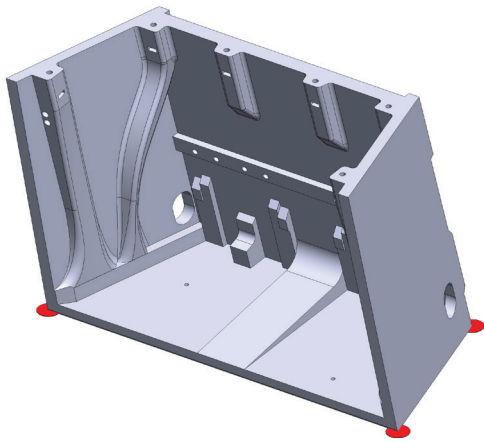
Drill the screw holes with a 4-4.5mm drill bit.

Cut off the auxiliary areas marked in red.

If you do not need the auxiliary areas, you can print an alternate part **01-02\_NO\_BASE.**

# Jagdpanzer 38(t)

## Printing guide



<b>PART Nr.:</b>	<b>01-03</b>
<b>MATERIAL:</b>	PET(G), CPE, ASA275
<b>LAYER:</b>	0,2 - 0,4mm
<b>AMOUNT:</b>	1x
<b>SUPPORT:</b>	NO
<b>NOZZLE:</b>	0,4 - 0,6mm

**NOTES:**

Drill the screw holes with a 4-4.5mm drill bit.  
Cut off the auxiliary areas marked in red.  
If you do not need the auxiliary areas, you can print an alternate part **01-03\_NO\_BASE**.

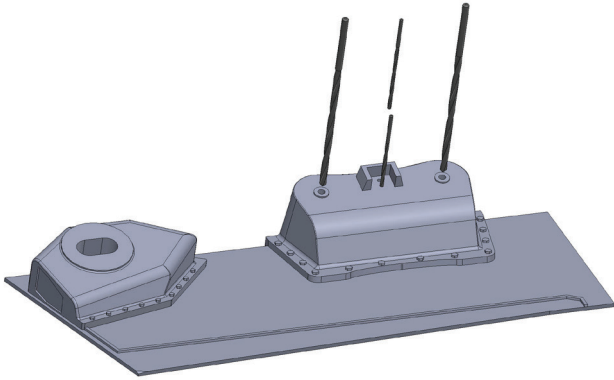
<b>PART Nr.:</b>	<b>01-04A</b>
<b>MATERIAL:</b>	PET(G), CPE, ASA, ABS
<b>LAYER:</b>	0,10 - 0,25mm
<b>AMOUNT:</b>	1x
<b>SUPPORT:</b>	NO
<b>NOZZLE:</b>	0,4mm

**NOTES:**

Drill the screw holes with a 2-2.5mm and 4-4.5mm drill bit.

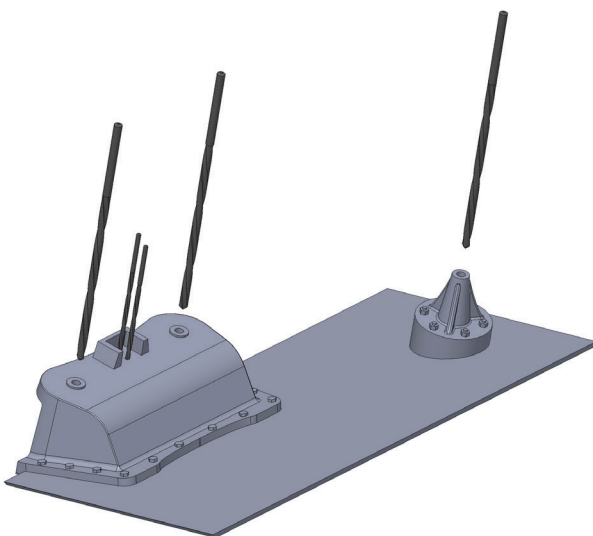
# Jagdpanzer 38(t)

## Printing guide



<b>PART Nr.:</b>	<b>01-04B</b>
<b>MATERIAL:</b>	PET(G), CPE, ASA, ABS
<b>LAYER:</b>	0,10 - 0,25mm
<b>AMOUNT:</b>	1x
<b>SUPPORT:</b>	NO
<b>NOZZLE:</b>	0,4mm

**NOTES:** Drill the screw holes with a 2-2.5mm and 4-4.5mm drill bit.

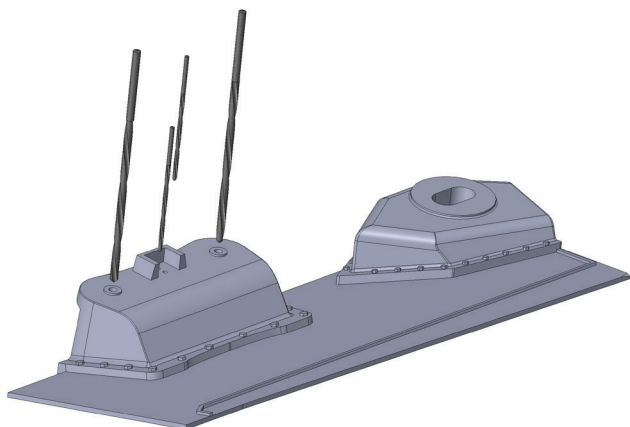


<b>PART Nr.:</b>	<b>01-05A</b>
<b>MATERIAL:</b>	PET(G), CPE, ASA, ABS
<b>LAYER:</b>	0,10 - 0,25mm
<b>AMOUNT:</b>	1x
<b>SUPPORT:</b>	NO
<b>NOZZLE:</b>	0,4mm

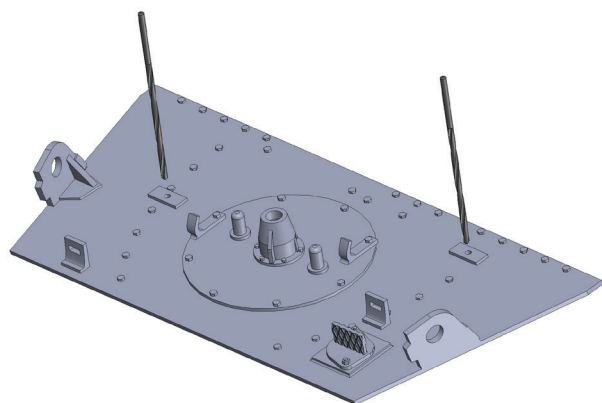
**NOTES:** Drill the screw holes with a 2-2.5mm and 4-4.5mm drill bit.

# Jagdpanzer 38(t)

## Printing guide



<b>PART Nr.:</b>	<b>01-05B</b>
<b>MATERIAL:</b>	PET(G), CPE, ASA, ABS
<b>LAYER:</b>	0,10 - 0,25mm
<b>AMOUNT:</b>	1x
<b>SUPPORT:</b>	NO
<b>NOZZLE:</b>	0,4mm
<b>NOTES:</b>	Drill the screw holes with a 2-2.5mm and 4-4.5mm drill bit.

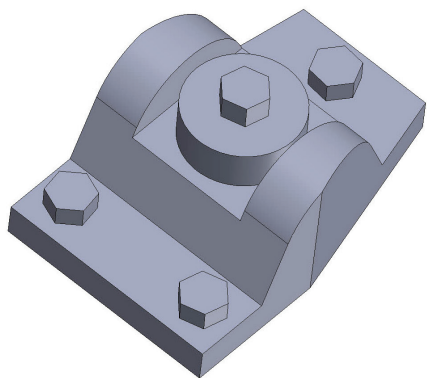


<b>PART Nr.:</b>	<b>01-06</b>
<b>MATERIAL:</b>	PET(G), CPE, ASA, ABS
<b>LAYER:</b>	0,10 - 0,20mm
<b>AMOUNT:</b>	1x
<b>SUPPORT:</b>	NO
<b>NOZZLE:</b>	0,4mm
<b>NOTES:</b>	Drill the screw holes with a 3-3.5mm drill bit.



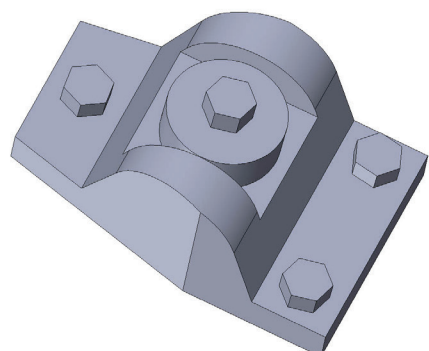
# Jagdpanzer 38(t)

## Printing guide



<b>PART Nr.:</b>	<b>01-07</b>
<b>MATERIAL:</b>	PET(G), CPE, ASA, ABS
<b>LAYER:</b>	0,10 - 0,20mm
<b>AMOUNT:</b>	1x
<b>SUPPORT:</b>	NO
<b>NOZZLE:</b>	0,4mm

NOTES:

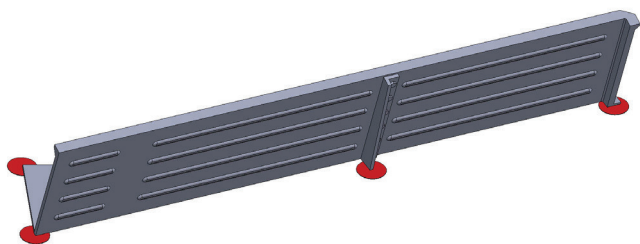


<b>PART Nr.:</b>	<b>01-08</b>
<b>MATERIAL:</b>	PET(G), CPE, ASA, ABS
<b>LAYER:</b>	0,10 - 0,20mm
<b>AMOUNT:</b>	1x
<b>SUPPORT:</b>	NO
<b>NOZZLE:</b>	0,4mm

NOTES:

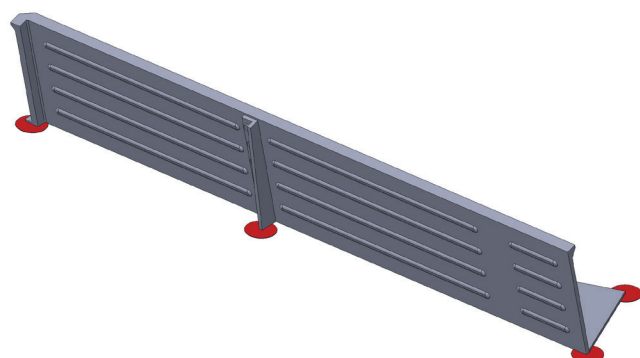
# Jagdpanzer 38(t)

## Printing guide



<b>PART Nr.:</b>	<b>01-09</b>
<b>MATERIAL:</b>	PET(G), CPE, ASA, ABS
<b>LAYER:</b>	0,10 - 0,20mm
<b>AMOUNT:</b>	1x
<b>SUPPORT:</b>	NO
<b>NOZZLE:</b>	0,4mm

**NOTES:**  
Cut off the auxiliary areas marked in red.  
If you do not need the auxiliary areas, you can print an alternate part **01-09\_NO\_BASE**.

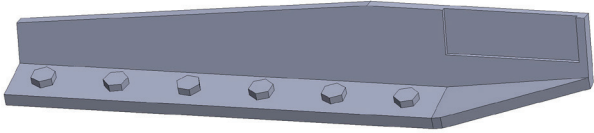


<b>PART Nr.:</b>	<b>01-10</b>
<b>MATERIAL:</b>	PET(G), CPE, ASA, ABS
<b>LAYER:</b>	0,10 - 0,20mm
<b>AMOUNT:</b>	1x
<b>SUPPORT:</b>	NO
<b>NOZZLE:</b>	0,4mm

**NOTES:**  
Cut off the auxiliary areas marked in red.  
If you do not need the auxiliary areas, you can print an alternate part **01-10\_NO\_BASE**.

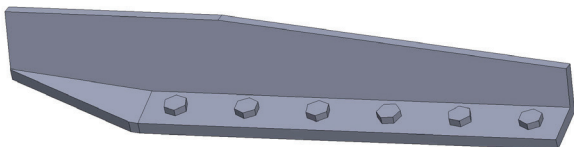
# Jagdpanzer 38(t)

## Printing guide



<b>PART Nr.:</b>	<b>01-11</b>
<b>MATERIAL:</b>	PET(G), CPE, ASA, ABS
<b>LAYER:</b>	0,10 - 0,20mm
<b>AMOUNT:</b>	1x
<b>SUPPORT:</b>	NO
<b>NOZZLE:</b>	0,4mm

NOTES:

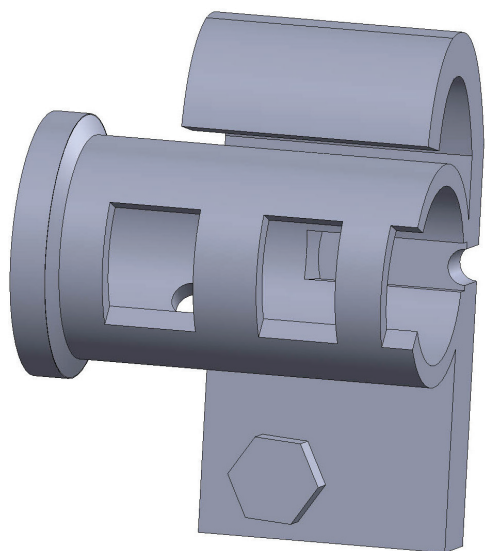


<b>PART Nr.:</b>	<b>01-12</b>
<b>MATERIAL:</b>	PET(G), CPE, ASA, ABS
<b>LAYER:</b>	0,10 - 0,20mm
<b>AMOUNT:</b>	1x
<b>SUPPORT:</b>	NO
<b>NOZZLE:</b>	0,4mm

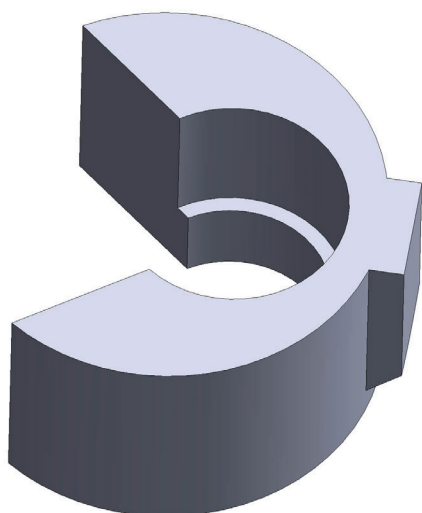
NOTES:

# Jagdpanzer 38(t)

## Printing guide



<b>PART Nr.:</b>	<b>01-13A</b>
<b>MATERIAL:</b>	PET(G), CPE, ASA, ABS
<b>LAYER:</b>	0,10 - 0,20mm
<b>AMOUNT:</b>	1x
<b>SUPPORT:</b>	NO
<b>NOZZLE:</b>	0,3 - 0,4mm
<b>NOTES:</b>	You can use simple part <b>01-13_alt</b> , or parts <b>01-13A_alt</b> and <b>01-13B_alt</b> , if you dont want to use LED diodes.

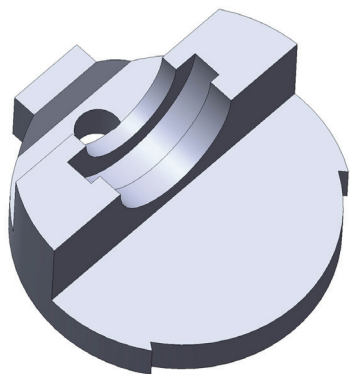


<b>PART Nr.:</b>	<b>01-13B</b>
<b>MATERIAL:</b>	PET(G), CPE, ASA, ABS
<b>LAYER:</b>	0,10 - 0,20mm
<b>AMOUNT:</b>	1x
<b>SUPPORT:</b>	NO
<b>NOZZLE:</b>	0,3 - 0,4mm
<b>NOTES:</b>	



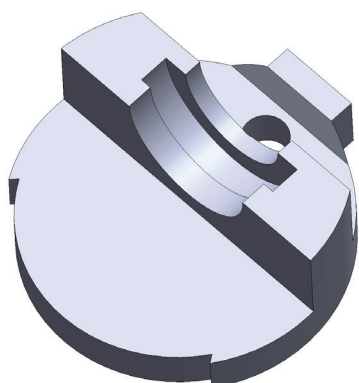
# Jagdpanzer 38(t)

## Printing guide



<b>PART Nr.:</b>	<b>01-13C</b>
<b>MATERIAL:</b>	PET(G), CPE, ASA, ABS
<b>LAYER:</b>	0,10 - 0,20mm
<b>AMOUNT:</b>	1x
<b>SUPPORT:</b>	NO
<b>NOZZLE:</b>	0,3 - 0,4mm

NOTES:

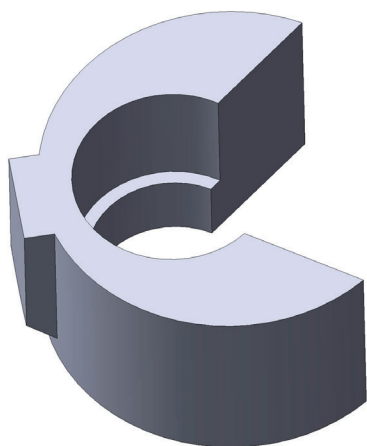


<b>PART Nr.:</b>	<b>01-13D</b>
<b>MATERIAL:</b>	PET(G), CPE, ASA, ABS
<b>LAYER:</b>	0,10 - 0,20mm
<b>AMOUNT:</b>	1x
<b>SUPPORT:</b>	NO
<b>NOZZLE:</b>	0,3 - 0,4mm

NOTES:

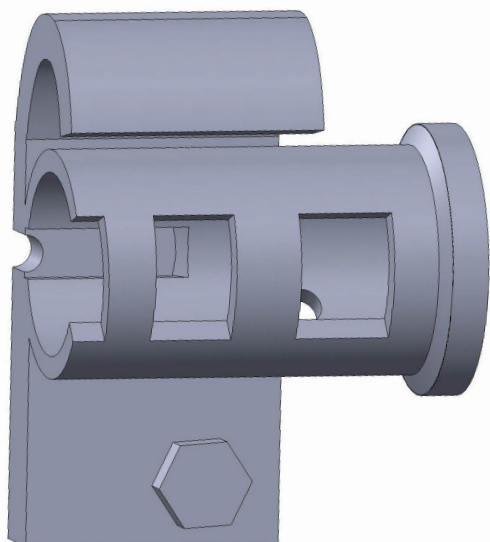
# Jagdpanzer 38(t)

## Printing guide



<b>PART Nr.:</b>	<b>01-13E</b>
<b>MATERIAL:</b>	PET(G), CPE, ASA, ABS
<b>LAYER:</b>	0,10 - 0,20mm
<b>AMOUNT:</b>	1x
<b>SUPPORT:</b>	NO
<b>NOZZLE:</b>	0,3 - 0,4mm

NOTES:

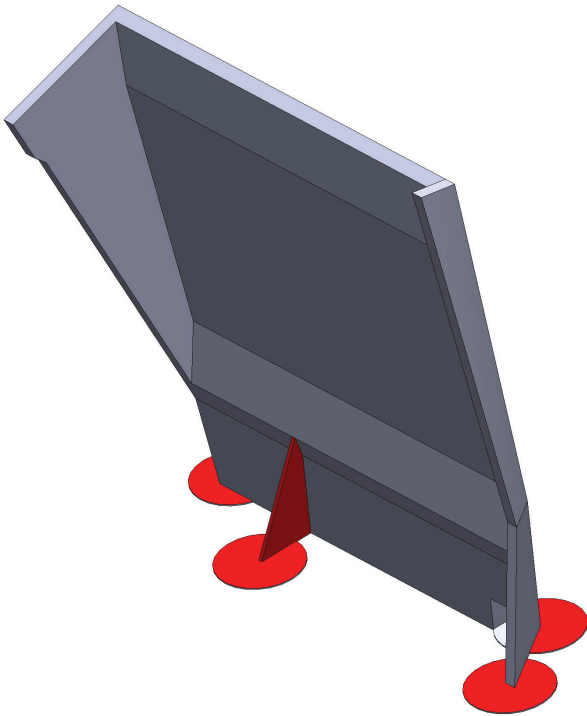


<b>PART Nr.:</b>	<b>01-13F</b>
<b>MATERIAL:</b>	PET(G), CPE, ASA, ABS
<b>LAYER:</b>	0,10 - 0,20mm
<b>AMOUNT:</b>	1x
<b>SUPPORT:</b>	NO
<b>NOZZLE:</b>	0,3 - 0,4mm

NOTES:

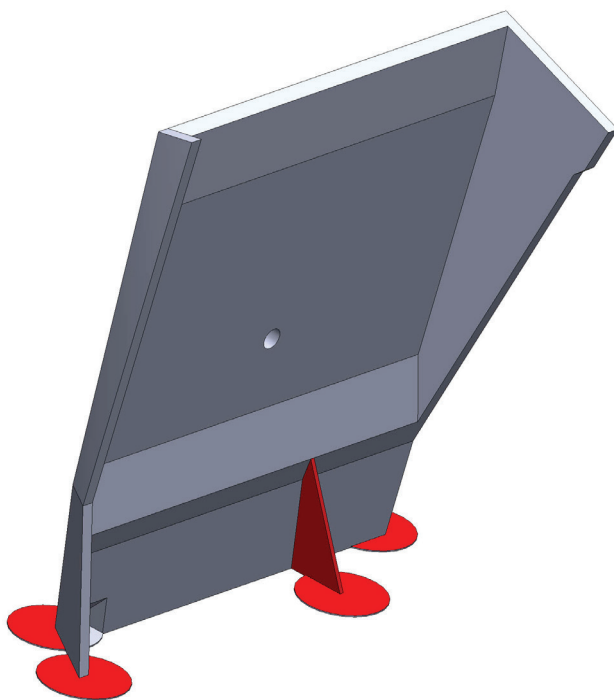
# Jagdpanzer 38(t)

## Printing guide



<b>PART Nr.:</b>	<b>01-14</b>
<b>MATERIAL:</b>	PET(G), CPE, ASA, ABS
<b>LAYER:</b>	0,10 - 0,20mm
<b>AMOUNT:</b>	1x
<b>SUPPORT:</b>	NO
<b>NOZZLE:</b>	0,4mm

**NOTES:**  
Cut off the auxiliary areas marked in red.  
If you do not need the auxiliary areas, you can print an alternate part **01-13\_NO\_BASE**.

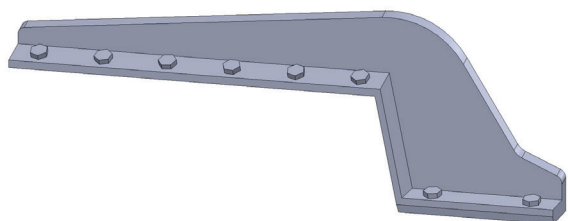


<b>PART Nr.:</b>	<b>01-15</b>
<b>MATERIAL:</b>	PET(G), CPE, ASA, ABS
<b>LAYER:</b>	0,10 - 0,20mm
<b>AMOUNT:</b>	1x
<b>SUPPORT:</b>	NO
<b>NOZZLE:</b>	0,4mm

**NOTES:**  
Cut off the auxiliary areas marked in red.  
If you do not need the auxiliary areas, you can print an alternate part **01-14\_NO\_BASE**.

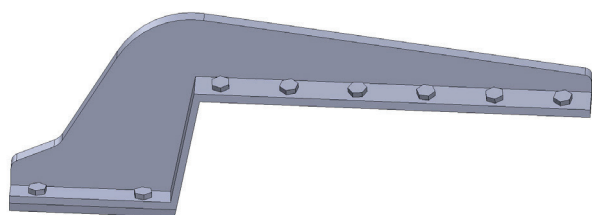
# Jagdpanzer 38(t)

## Printing guide



<b>PART Nr.:</b>	<b>01-16</b>
<b>MATERIAL:</b>	PET(G), CPE, ASA, ABS
<b>LAYER:</b>	0,10 - 0,20mm
<b>AMOUNT:</b>	1x
<b>SUPPORT:</b>	NO
<b>NOZZLE:</b>	0,4mm

<b>NOTES:</b>	
---------------	--



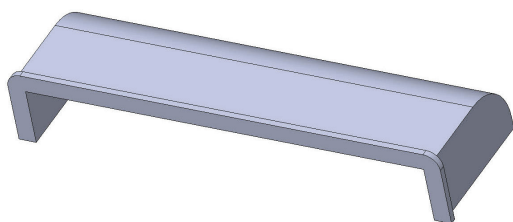
<b>PART Nr.:</b>	<b>01-17</b>
<b>MATERIAL:</b>	PET(G), CPE, ASA, ABS
<b>LAYER:</b>	0,10 - 0,20mm
<b>AMOUNT:</b>	1x
<b>SUPPORT:</b>	NO
<b>NOZZLE:</b>	0,4mm

<b>NOTES:</b>	
---------------	--



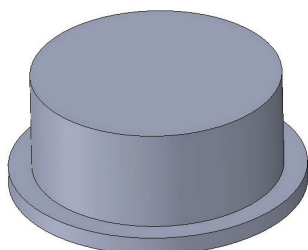
# Jagdpanzer 38(t)

## Printing guide



<b>PART Nr.:</b>	<b>01-18</b>
<b>MATERIAL:</b>	PET(G), CPE, ASA, ABS
<b>LAYER:</b>	0,10 - 0,20mm
<b>AMOUNT:</b>	1x
<b>SUPPORT:</b>	NO
<b>NOZZLE:</b>	0,4mm

NOTES:



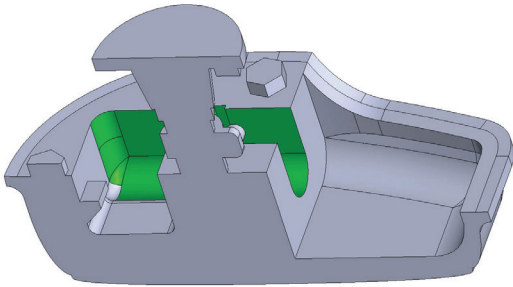
<b>PART Nr.:</b>	<b>01-19</b>
<b>MATERIAL:</b>	PET(G), CPE, ASA, ABS
<b>LAYER:</b>	0,10 - 0,25mm
<b>AMOUNT:</b>	1x
<b>SUPPORT:</b>	NO
<b>NOZZLE:</b>	0,4mm

NOTES:

The part is identical to part **04-15**.  
You will need a total of 3 pieces of  
this part to build.

# Jagdpanzer 38(t)

## Printing guide

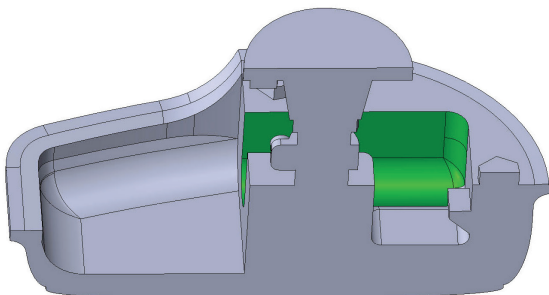


<b>PART Nr.:</b>	<b>01-20A</b>
<b>MATERIAL:</b>	PET(G), CPE, ASA, ABS
<b>LAYER:</b>	0,10 - 0,20mm
<b>AMOUNT:</b>	1x
<b>SUPPORT:</b>	YES
<b>NOZZLE:</b>	0,3 - 0,4mm

**NOTES:**

Apply the support to areas marked in green.

You can use part **01-20\_DLP** for DLP/SLA/LCD printer.



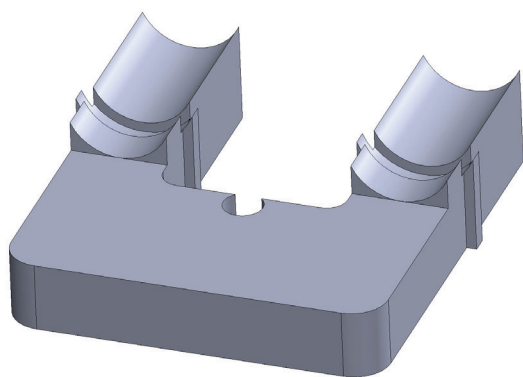
<b>PART Nr.:</b>	<b>01-20B</b>
<b>MATERIAL:</b>	PET(G), CPE, ASA, ABS
<b>LAYER:</b>	0,10 - 0,20mm
<b>AMOUNT:</b>	1x
<b>SUPPORT:</b>	YES
<b>NOZZLE:</b>	0,3 - 0,4mm

**NOTES:**

Apply the support to areas marked in green.

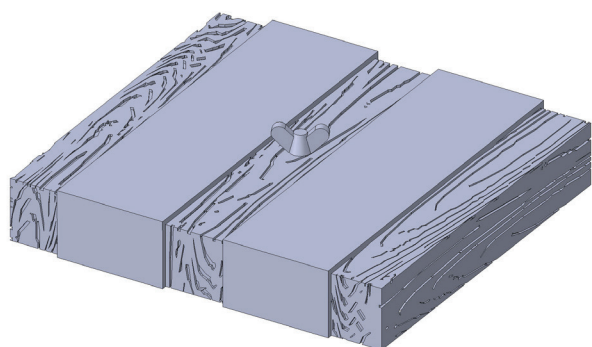
# Jagdpanzer 38(t)

## Printing guide



<b>PART Nr.:</b>	<b>01-20C</b>
<b>MATERIAL:</b>	PET(G), CPE, ASA, ABS
<b>LAYER:</b>	0,10 - 0,20mm
<b>AMOUNT:</b>	1x
<b>SUPPORT:</b>	NO
<b>NOZZLE:</b>	0,3 - 0,4mm

NOTES:



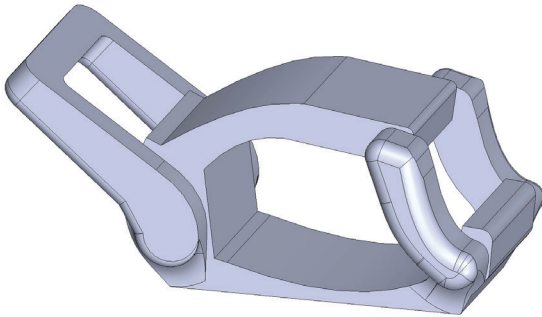
<b>PART Nr.:</b>	<b>01-21</b>
<b>MATERIAL:</b>	PET(G), CPE, ASA, ABS
<b>LAYER:</b>	0,10 - 0,20mm
<b>AMOUNT:</b>	1x
<b>SUPPORT:</b>	NO
<b>NOZZLE:</b>	0,4mm

NOTES:

If you want to use DIN316 nut, use part **01-21\_alt**.

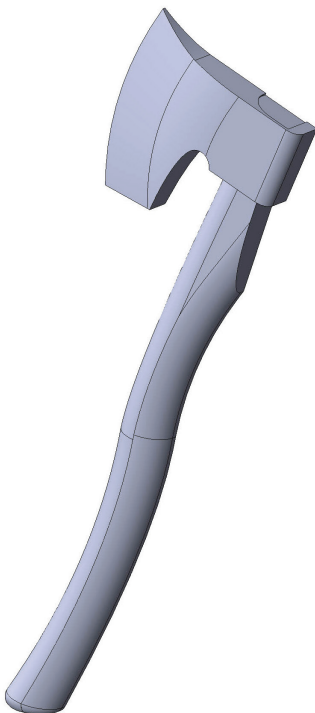
# Jagdpanzer 38(t)

## Printing guide



<b>PART Nr.:</b>	<b>01-22</b>
<b>MATERIAL:</b>	PET(G), CPE, ASA, ABS
<b>LAYER:</b>	0,10 - 0,20mm
<b>AMOUNT:</b>	3x
<b>SUPPORT:</b>	NO
<b>NOZZLE:</b>	0,4mm

**NOTES:** The part is identical to part **04-22**. You will need a total of 5 pieces of this part to print.



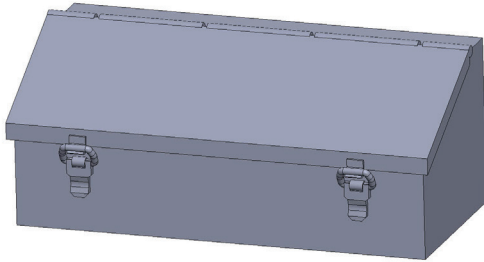
<b>PART Nr.:</b>	<b>01-23</b>
<b>MATERIAL:</b>	PET(G), CPE, ASA, ABS
<b>LAYER:</b>	0,10 - 0,20mm
<b>AMOUNT:</b>	1x
<b>SUPPORT:</b>	NO
<b>NOZZLE:</b>	0,4mm

**NOTES:**



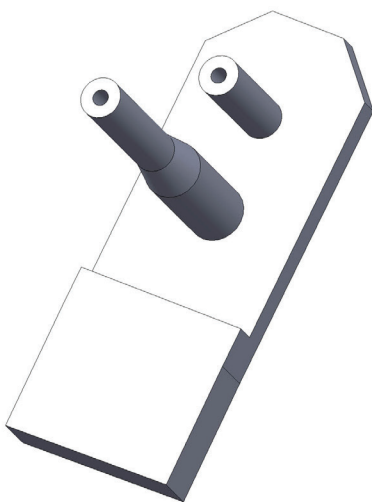
# Jagdpanzer 38(t)

## Printing guide



<b>PART Nr.:</b>	<b>01-24</b>
<b>MATERIAL:</b>	PET(G), CPE, ASA, ABS
<b>LAYER:</b>	0,10 - 0,20mm
<b>AMOUNT:</b>	1x
<b>SUPPORT:</b>	NO
<b>NOZZLE:</b>	0,4mm

**NOTES:** You can use part **01-24\_DLP** for DLP/SLA/LCD printer.

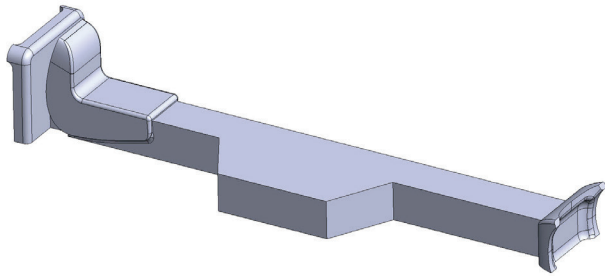


<b>PART Nr.:</b>	<b>01-25</b>
<b>MATERIAL:</b>	PET(G), CPE, ASA, ABS
<b>LAYER:</b>	0,10 - 0,20mm
<b>AMOUNT:</b>	1x
<b>SUPPORT:</b>	NO
<b>NOZZLE:</b>	0,4mm

**NOTES:**

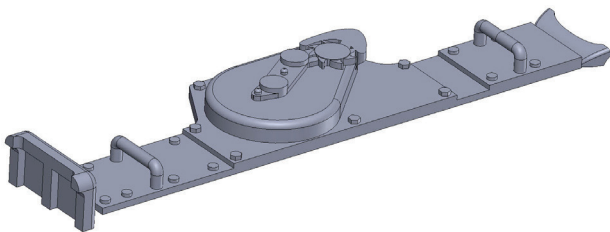
# Jagdpanzer 38(t)

## Printing guide



<b>PART Nr.:</b>	<b>01-26A</b>
<b>MATERIAL:</b>	PET(G), CPE, ASA, ABS
<b>LAYER:</b>	0,10 - 0,20mm
<b>AMOUNT:</b>	1x
<b>SUPPORT:</b>	NO
<b>NOZZLE:</b>	0,4mm

**NOTES:** You can use part **01-26\_DLP** for DLP/SLA/LCD printer.

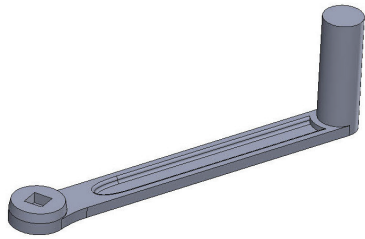


<b>PART Nr.:</b>	<b>01-26B</b>
<b>MATERIAL:</b>	PET(G), CPE, ASA, ABS
<b>LAYER:</b>	0,10 - 0,20mm
<b>AMOUNT:</b>	1x
<b>SUPPORT:</b>	NO
<b>NOZZLE:</b>	0,4mm

**NOTES:**

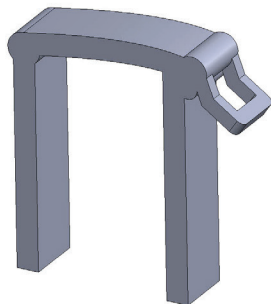
# Jagdpanzer 38(t)

## Printing guide



<b>PART Nr.:</b>	<b>01-26C</b>
<b>MATERIAL:</b>	PET(G), CPE, ASA, ABS
<b>LAYER:</b>	0,10 - 0,20mm
<b>AMOUNT:</b>	1x
<b>SUPPORT:</b>	NO
<b>NOZZLE:</b>	0,4mm

NOTES:

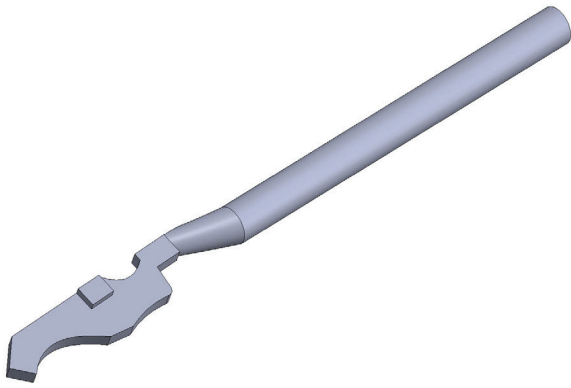


<b>PART Nr.:</b>	<b>01-26D</b>
<b>MATERIAL:</b>	PET(G), CPE, ASA, ABS
<b>LAYER:</b>	0,10 - 0,20mm
<b>AMOUNT:</b>	2x
<b>SUPPORT:</b>	NO
<b>NOZZLE:</b>	0,4mm

NOTES:

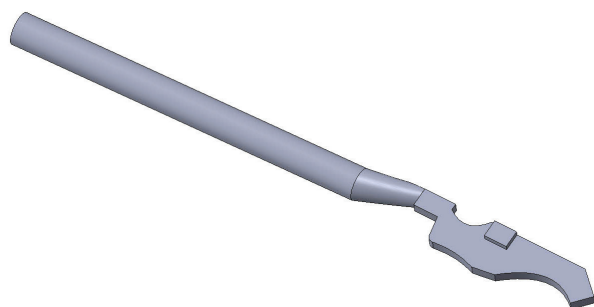
# Jagdpanzer 38(t)

## Printing guide



<b>PART Nr.:</b>	<b>01-27A</b>
<b>MATERIAL:</b>	PET(G), CPE, ASA, ABS
<b>LAYER:</b>	0,10 - 0,20mm
<b>AMOUNT:</b>	1x
<b>SUPPORT:</b>	NO
<b>NOZZLE:</b>	0,4mm

NOTES:

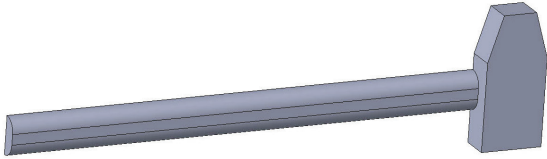


<b>PART Nr.:</b>	<b>01-27B</b>
<b>MATERIAL:</b>	PET(G), CPE, ASA, ABS
<b>LAYER:</b>	0,10 - 0,20mm
<b>AMOUNT:</b>	1x
<b>SUPPORT:</b>	NO
<b>NOZZLE:</b>	0,4mm

NOTES:

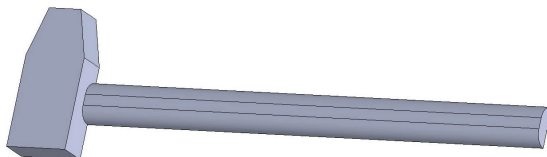
# Jagdpanzer 38(t)

## Printing guide



<b>PART Nr.:</b>	<b>01-28A</b>
<b>MATERIAL:</b>	PET(G), CPE, ASA, ABS
<b>LAYER:</b>	0,10 - 0,25mm
<b>AMOUNT:</b>	1x
<b>SUPPORT:</b>	NO
<b>NOZZLE:</b>	0,4mm

NOTES:

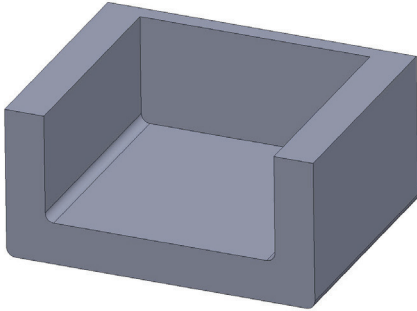


<b>PART Nr.:</b>	<b>01-28B</b>
<b>MATERIAL:</b>	PET(G), CPE, ASA, ABS
<b>LAYER:</b>	0,10 - 0,25mm
<b>AMOUNT:</b>	1x
<b>SUPPORT:</b>	NO
<b>NOZZLE:</b>	0,4mm

NOTES:

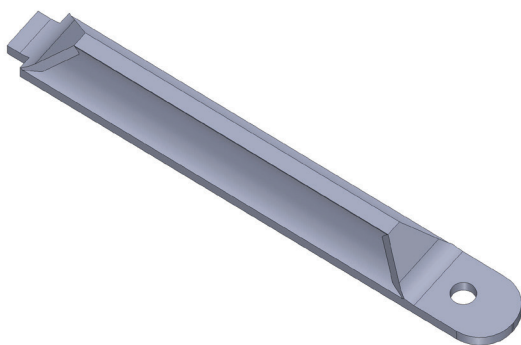
# Jagdpanzer 38(t)

## Printing guide



<b>PART Nr.:</b>	<b>01-28C</b>
<b>MATERIAL:</b>	PET(G), CPE, ASA, ABS
<b>LAYER:</b>	0,10 - 0,20mm
<b>AMOUNT:</b>	1x
<b>SUPPORT:</b>	NO
<b>NOZZLE:</b>	0,4mm

NOTES:

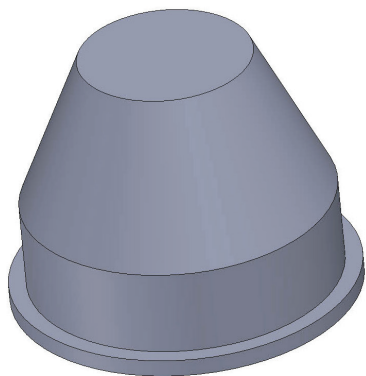


<b>PART Nr.:</b>	<b>01-29</b>
<b>MATERIAL:</b>	PET(G), CPE, ASA, ABS
<b>LAYER:</b>	0,10 - 0,20mm
<b>AMOUNT:</b>	2x
<b>SUPPORT:</b>	NO
<b>NOZZLE:</b>	0,4mm

NOTES:

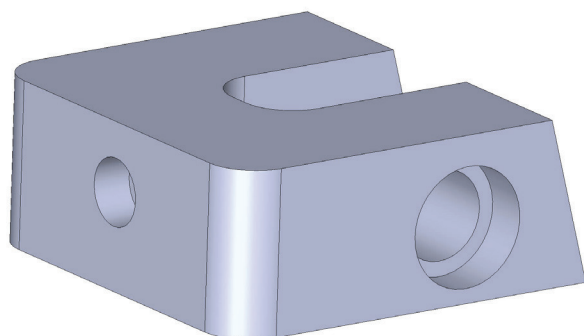
# Jagdpanzer 38(t)

## Printing guide



<b>PART Nr.:</b>	<b>01-30</b>
<b>MATERIAL:</b>	PET(G), CPE, ASA, ABS
<b>LAYER:</b>	0,10 - 0,20mm
<b>AMOUNT:</b>	1x
<b>SUPPORT:</b>	NO
<b>NOZZLE:</b>	0,4mm

NOTES:

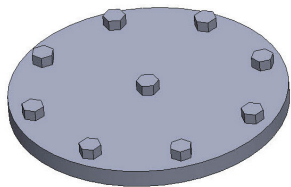
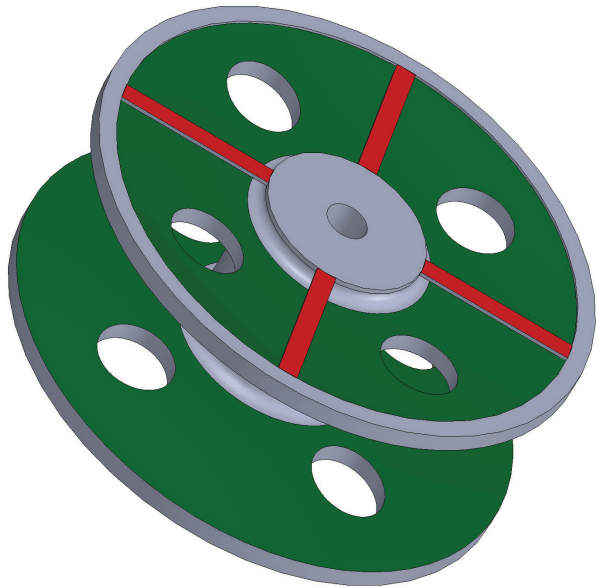


<b>PART Nr.:</b>	<b>01-31</b>
<b>MATERIAL:</b>	PET(G), CPE, ASA, ABS
<b>LAYER:</b>	0,10 - 0,25mm
<b>AMOUNT:</b>	2x
<b>SUPPORT:</b>	NO
<b>NOZZLE:</b>	0,4mm

NOTES:

# Jagdpanzer 38(t)

## Printing guide



<b>PART Nr.:</b>	<b>01-32</b>
<b>MATERIAL:</b>	PET(G), CPE, ASA, ABS
<b>LAYER:</b>	0,10 - 0,20mm
<b>AMOUNT:</b>	2x
<b>SUPPORT:</b>	YES
<b>NOZZLE:</b>	0,4mm

<b>NOTES:</b>	<p>Apply the support to areas marked in green.</p> <p>Cut off the auxiliary areas marked in red.</p> <p>If you do not need the auxiliary areas, you can print an alternate part <b>01-32_NO_BASE</b></p>
---------------	--

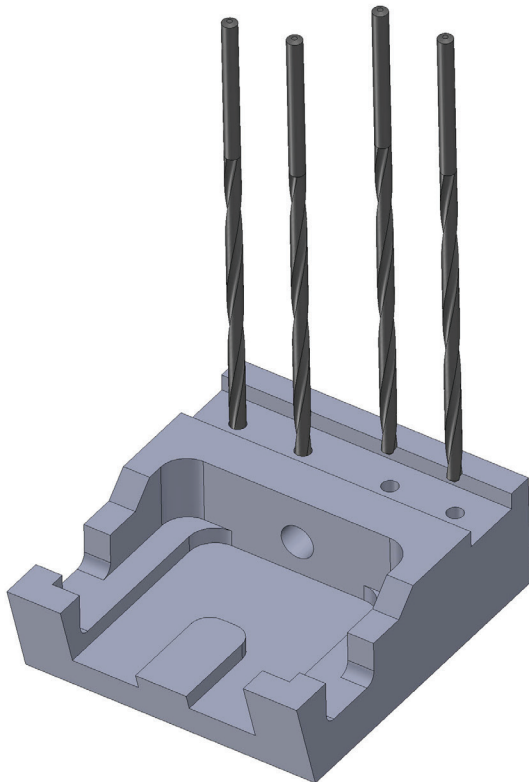
<b>PART Nr.:</b>	<b>01-33</b>
<b>MATERIAL:</b>	PET(G), CPE, ASA, ABS
<b>LAYER:</b>	0,10 - 0,20mm
<b>AMOUNT:</b>	2x
<b>SUPPORT:</b>	NO
<b>NOZZLE:</b>	0,4mm

<b>NOTES:</b>	
---------------	--



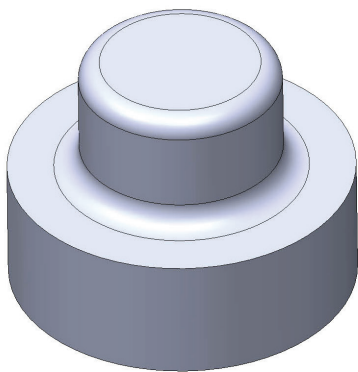
# Jagdpanzer 38(t)

## Printing guide



<b>PART Nr.:</b>	<b>01-34</b>
<b>MATERIAL:</b>	PET(G), CPE, ASA, ABS
<b>LAYER:</b>	0,1 - 0,25mm
<b>AMOUNT:</b>	2x
<b>SUPPORT:</b>	NO
<b>NOZZLE:</b>	0,25 - 0,4mm

**NOTES:** Drill the screw holes with a 4-4.5mm drill bit.

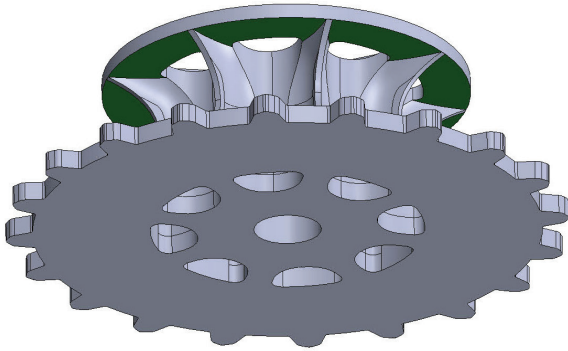


<b>PART Nr.:</b>	<b>01-35</b>
<b>MATERIAL:</b>	PET(G), CPE, ASA, ABS
<b>LAYER:</b>	0,10 - 0,25mm
<b>AMOUNT:</b>	2x
<b>SUPPORT:</b>	NO
<b>NOZZLE:</b>	0,4mm

**NOTES:**

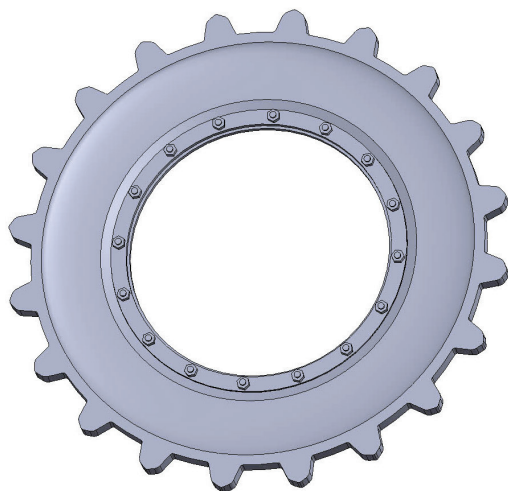
# Jagdpanzer 38(t)

## Printing guide



<b>PART Nr.:</b>	<b>01-36</b>
<b>MATERIAL:</b>	ASA, ABS
<b>LAYER:</b>	0,10 - 0,20mm
<b>AMOUNT:</b>	2x
<b>SUPPORT:</b>	YES
<b>NOZZLE:</b>	0,4mm

**NOTES:** Apply the support to areas marked in green.  
It is recommended to print the part from ASA or ABS for the possibility of very strong bonding using acetone.

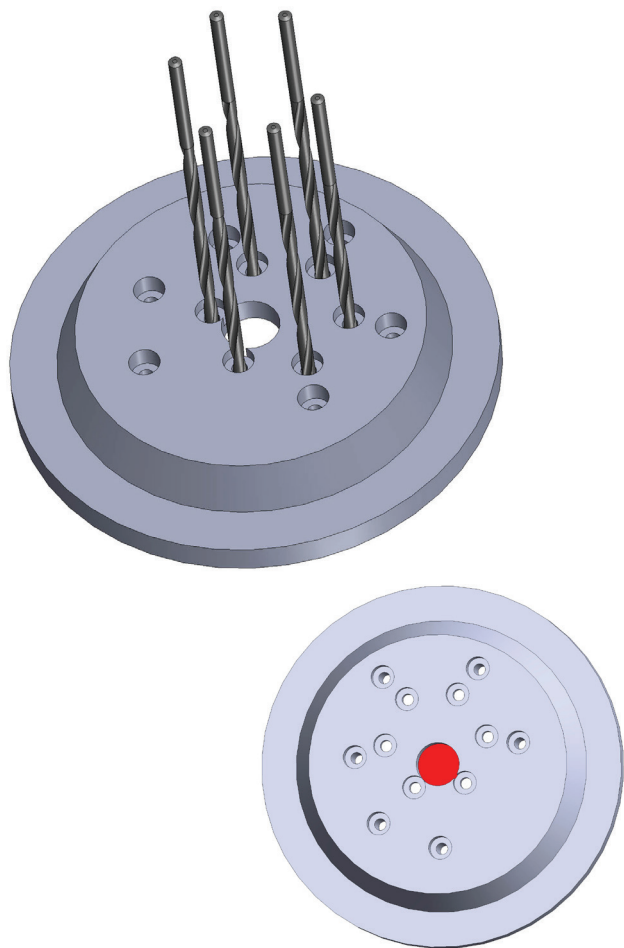


<b>PART Nr.:</b>	<b>01-37</b>
<b>MATERIAL:</b>	ASA, ABS
<b>LAYER:</b>	0,10 - 0,20mm
<b>AMOUNT:</b>	2x
<b>SUPPORT:</b>	NO
<b>NOZZLE:</b>	0,4mm

**NOTES:** It is recommended to print the part from ASA or ABS for the possibility of very strong bonding using acetone.

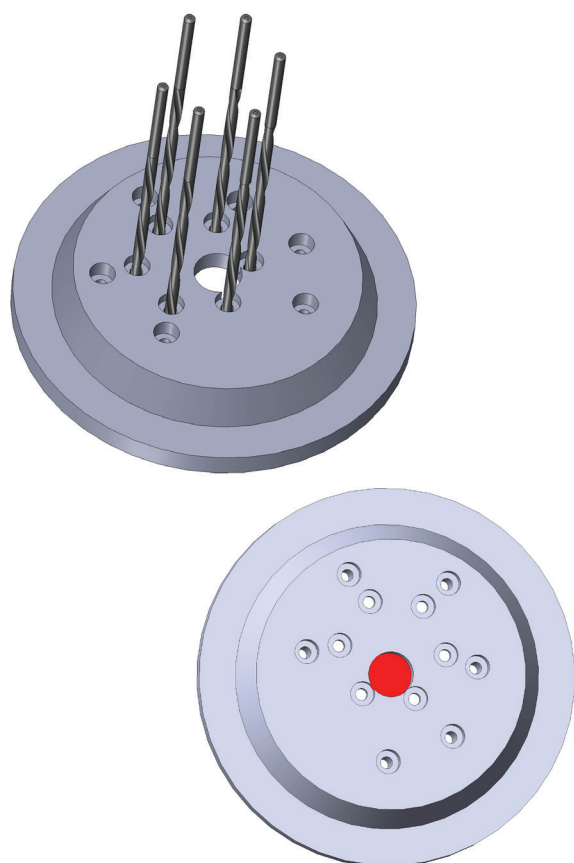
# Jagdpanzer 38(t)

## Printing guide



<b>PART Nr.:</b>	<b>01-38A</b>
<b>MATERIAL:</b>	PET(G), CPE, ASA, ABS
<b>LAYER:</b>	0,10 - 0,25mm
<b>AMOUNT:</b>	1x
<b>SUPPORT:</b>	NO
<b>NOZZLE:</b>	0,4mm

**NOTES:**  
Drill the screw holes with a 3 - 3,5mm drill bit. Cut off the auxiliary areas marked in red.

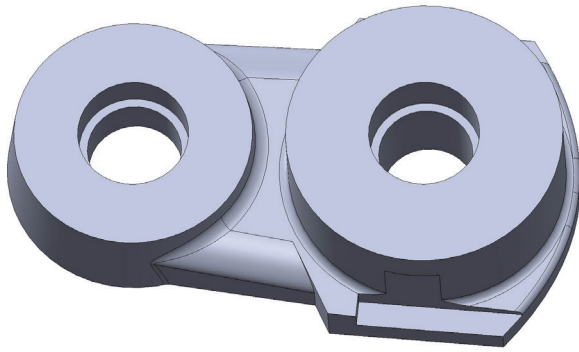


<b>PART Nr.:</b>	<b>01-38B</b>
<b>MATERIAL:</b>	PET(G), CPE, ASA, ABS
<b>LAYER:</b>	0,10 - 0,25mm
<b>AMOUNT:</b>	1x
<b>SUPPORT:</b>	NO
<b>NOZZLE:</b>	0,4mm

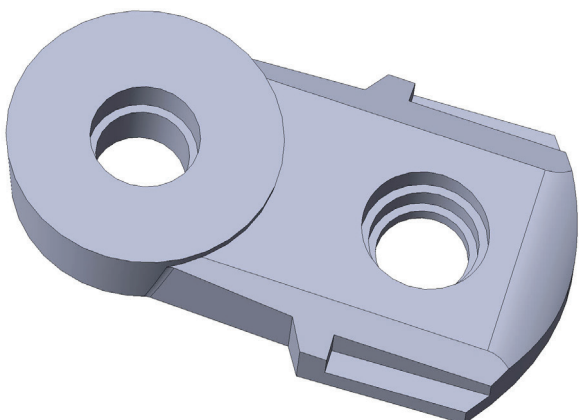
**NOTES:**  
Mirrored part 01-38A. Drill the screw holes with a 3 - 3,5mm drill bit. Cut off the auxiliary areas marked in red.

# Jagdpanzer 38(t)

## Printing guide



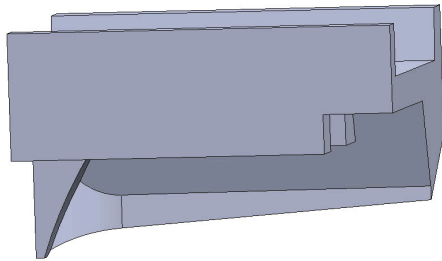
<b>PART Nr.:</b>	<b>01-39</b>
<b>MATERIAL:</b>	ASA, ABS
<b>LAYER:</b>	0,10 - 0,25mm
<b>AMOUNT:</b>	8x
<b>SUPPORT:</b>	NO
<b>NOZZLE:</b>	0,4mm
<b>NOTES:</b>	It is recommended to print the part from ASA or ABS for the possibility of very strong bonding using acetone.



<b>PART Nr.:</b>	<b>01-40</b>
<b>MATERIAL:</b>	ASA, ABS
<b>LAYER:</b>	0,10 - 0,25mm
<b>AMOUNT:</b>	8x
<b>SUPPORT:</b>	NO
<b>NOZZLE:</b>	0,4mm
<b>NOTES:</b>	It is recommended to print the part from ASA or ABS for the possibility of very strong bonding using acetone.

# Jagdpanzer 38(t)

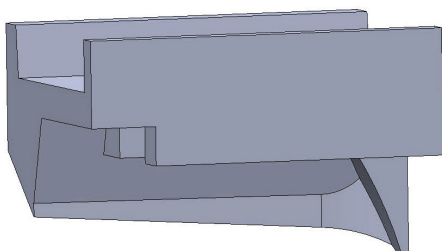
## Printing guide



<b>PART Nr.:</b>	<b>01-41A</b>
MATERIAL:	ASA, ABS
LAYER:	0,10 - 0,25mm
AMOUNT:	4x
SUPPORT:	NO
NOZZLE:	0,4mm

**NOTES:**

It is recommended to print the part from ASA or ABS for the possibility of very strong bonding using acetone.



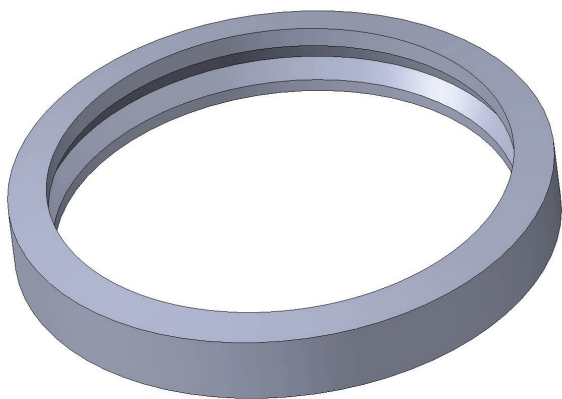
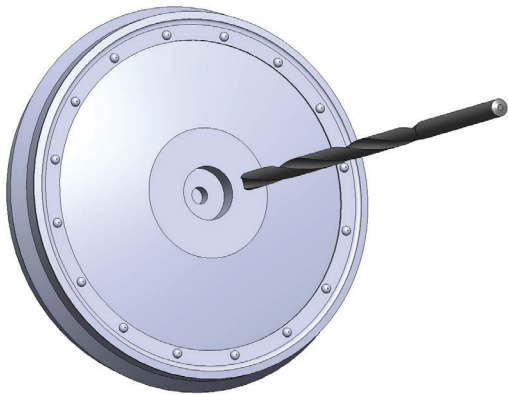
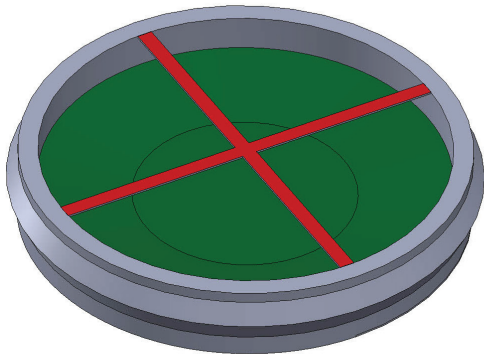
<b>PART Nr.:</b>	<b>01-41B</b>
MATERIAL:	ASA, ABS
LAYER:	0,10 - 0,25mm
AMOUNT:	4x
SUPPORT:	NO
NOZZLE:	0,4mm

**NOTES:**

It is recommended to print the part from ASA or ABS for the possibility of very strong bonding using acetone.

# Jagdpanzer 38(t)

## Printing guide



<b>PART Nr.:</b>	<b>01-42A</b>
<b>MATERIAL:</b>	PET(G), CPE, ASA, ABS
<b>LAYER:</b>	0,10 - 0,25mm
<b>AMOUNT:</b>	8x
<b>SUPPORT:</b>	YES
<b>NOZZLE:</b>	0,4mm

**NOTES:**

Apply the support to areas marked in green.

Cut off the auxiliary areas marked in red.

If you do not need the auxiliary areas, you can print an alternate part **01-42A\_NO\_BASE**.

Drill the screw holes with a 4mm drill bit.

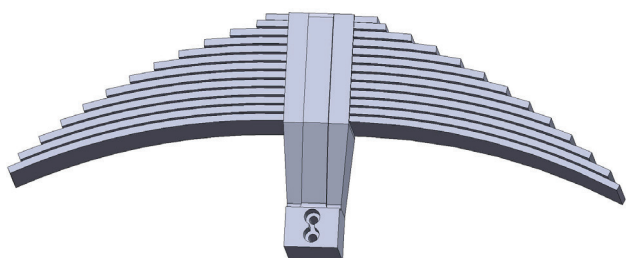
<b>PART Nr.:</b>	<b>01-42B</b>
<b>MATERIAL:</b>	TPU, TPE, NINJAFLEX
<b>LAYER:</b>	0,10 - 0,25mm
<b>AMOUNT:</b>	8x
<b>SUPPORT:</b>	NO
<b>NOZZLE:</b>	0,4mm

**NOTES:**

If you dont want to print with flexible materials, you can print an alternate part **01-42\_alt**.

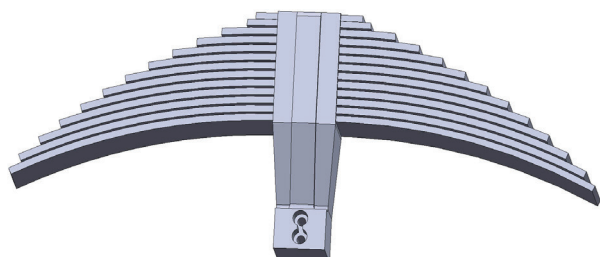
# Jagdpanzer 38(t)

## Printing guide



<b>PART Nr.:</b>	<b>01-43A</b>
<b>MATERIAL:</b>	ASA, ABS, NYLON
<b>LAYER:</b>	0,10 - 0,25mm
<b>AMOUNT:</b>	2x
<b>SUPPORT:</b>	NO
<b>NOZZLE:</b>	0,4mm

**NOTES:** We recommend printing from ASA, ABS or Nylon for greater flexibility.

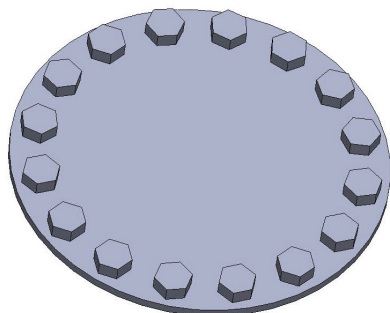


<b>PART Nr.:</b>	<b>01-43B</b>
<b>MATERIAL:</b>	ASA, ABS, NYLON
<b>LAYER:</b>	0,10 - 0,25mm
<b>AMOUNT:</b>	2x
<b>SUPPORT:</b>	NO
<b>NOZZLE:</b>	0,4mm

**NOTES:** We recommend printing from ASA, ABS or Nylon for greater flexibility.

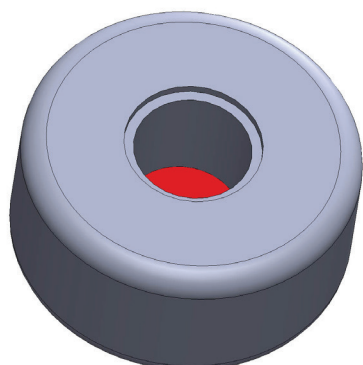
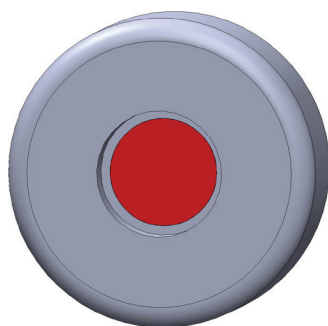
# Jagdpanzer 38(t)

## Printing guide



<b>PART Nr.:</b>	<b>01-44</b>
<b>MATERIAL:</b>	PET(G), CPE, ASA, ABS
<b>LAYER:</b>	0,10 - 0,20mm
<b>AMOUNT:</b>	8x
<b>SUPPORT:</b>	NO
<b>NOZZLE:</b>	0,4mm

NOTES:



<b>PART Nr.:</b>	<b>01-45</b>
<b>MATERIAL:</b>	PET(G), CPE, ASA, ABS
<b>LAYER:</b>	0,10 - 0,25mm
<b>AMOUNT:</b>	2x
<b>SUPPORT:</b>	NO
<b>NOZZLE:</b>	0,4mm

NOTES:

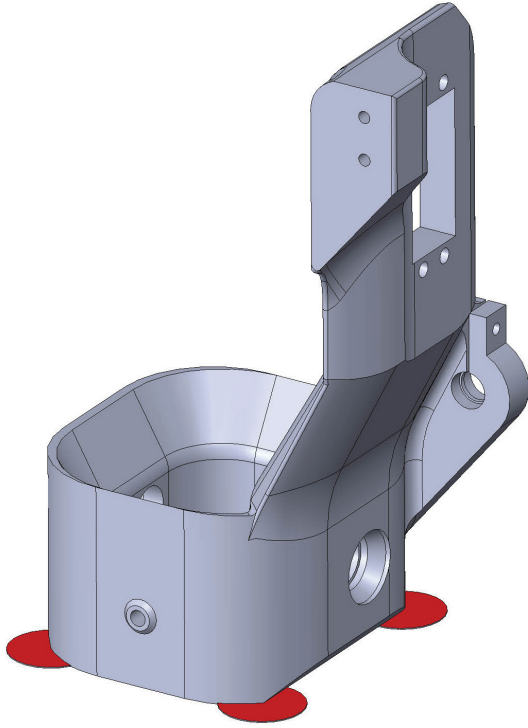
Cut off the auxiliary areas marked in red.





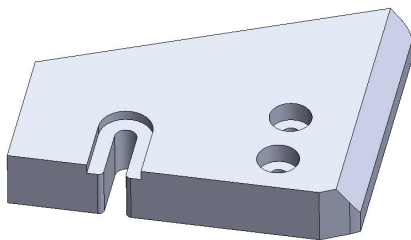
# Jagdpanzer 38(t)

## Printing guide



<b>PART Nr.:</b>	<b>02-01</b>
<b>MATERIAL:</b>	PET(G), CPE, ASA, ABS
<b>LAYER:</b>	0,15 - 0,25mm
<b>AMOUNT:</b>	1x
<b>SUPPORT:</b>	NO
<b>NOZZLE:</b>	0,4mm

**NOTES:**  
Cut off the auxiliary areas marked in red.  
If you do not need the auxiliary areas, you can print an alternate part **02-01\_NO\_BASE**.

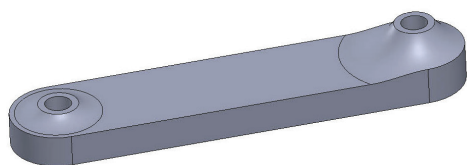


<b>PART Nr.:</b>	<b>02-02</b>
<b>MATERIAL:</b>	PET(G), CPE, ASA, ABS
<b>LAYER:</b>	0,1 - 0,3mm
<b>AMOUNT:</b>	1x
<b>SUPPORT:</b>	NO
<b>NOZZLE:</b>	0,3 - 0,6mm

**NOTES:**

# Jagdpanzer 38(t)

## Printing guide



<b>PART Nr.:</b>	<b>02-03</b>
<b>MATERIAL:</b>	PET(G), CPE, ASA, ABS
<b>LAYER:</b>	0,15 - 0,25mm
<b>AMOUNT:</b>	2x
<b>SUPPORT:</b>	NO
<b>NOZZLE:</b>	0,4mm

NOTES:



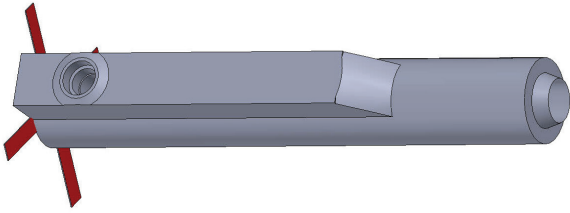
<b>PART Nr.:</b>	<b>02-04</b>
<b>MATERIAL:</b>	PET(G), CPE, ASA, ABS
<b>LAYER:</b>	0,1 - 0,3mm
<b>AMOUNT:</b>	1x
<b>SUPPORT:</b>	NO
<b>NOZZLE:</b>	0,3 - 0,4mm

NOTES:

If you do not want to use bearings,  
you can print an alternate part  
**02-04\_alt.**

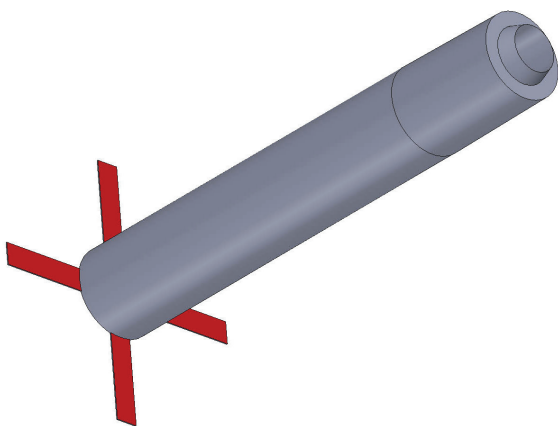
# Jagdpanzer 38(t)

## Printing guide



<b>PART Nr.:</b>	<b>02-05</b>
<b>MATERIAL:</b>	PET(G), CPE, ASA, ABS
<b>LAYER:</b>	0,15 - 0,25mm
<b>AMOUNT:</b>	1x
<b>SUPPORT:</b>	NO
<b>NOZZLE:</b>	0,4mm

**NOTES:** Cut off the auxiliary areas marked in red.  
If you do not need the auxiliary areas, you can print an alternate part **02-05\_NO\_BASE**.

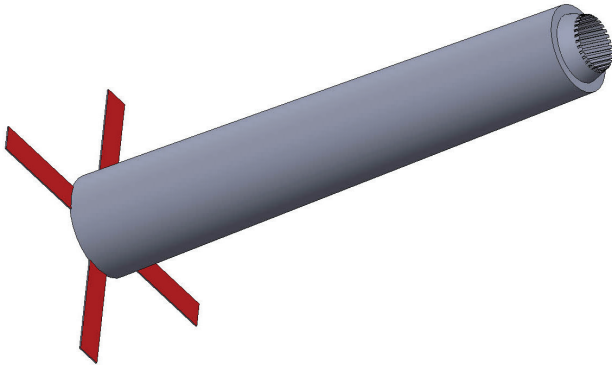


<b>PART Nr.:</b>	<b>02-06</b>
<b>MATERIAL:</b>	PET(G), CPE, ASA, ABS
<b>LAYER:</b>	0,15 - 0,25mm
<b>AMOUNT:</b>	1x
<b>SUPPORT:</b>	NO
<b>NOZZLE:</b>	0,4mm

**NOTES:** Cut off the auxiliary areas marked in red.  
If you do not need the auxiliary areas, you can print an alternate part **02-06\_NO\_BASE**.

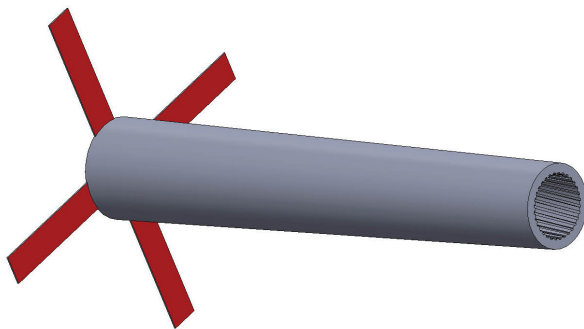
# Jagdpanzer 38(t)

## Printing guide



<b>PART Nr.:</b>	<b>02-07</b>
<b>MATERIAL:</b>	PET(G), CPE, ASA, ABS
<b>LAYER:</b>	0,15 - 0,25mm
<b>AMOUNT:</b>	1x
<b>SUPPORT:</b>	NO
<b>NOZZLE:</b>	0,3 - 0,4mm

**NOTES:** Cut off the auxiliary areas marked in red.  
If you do not need the auxiliary areas, you can print an alternate part **02-07\_NO\_BASE**.



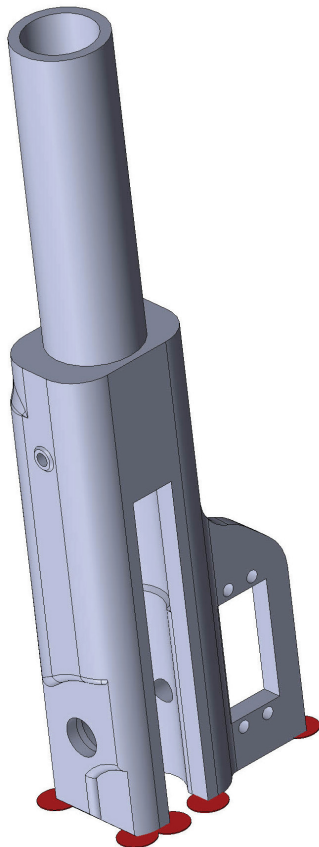
<b>PART Nr.:</b>	<b>02-08</b>
<b>MATERIAL:</b>	PET(G), CPE, ASA, ABS
<b>LAYER:</b>	0,15 - 0,25mm
<b>AMOUNT:</b>	1x
<b>SUPPORT:</b>	NO
<b>NOZZLE:</b>	0,3 - 0,4mm

**NOTES:** Cut off the auxiliary areas marked in red.  
If you do not need the auxiliary areas, you can print an alternate part **02-08\_NO\_BASE**.



<b>PART Nr.:</b>	<b>02-09</b>
<b>MATERIAL:</b>	PET(G), CPE, ASA, ABS
<b>LAYER:</b>	0,15 - 0,25mm
<b>AMOUNT:</b>	1x
<b>SUPPORT:</b>	NO
<b>NOZZLE:</b>	0,4mm

NOTES:



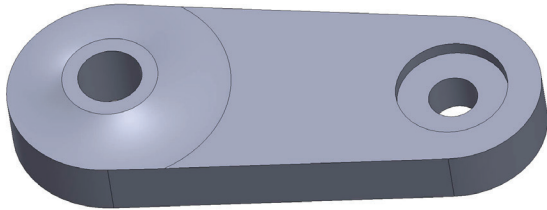
<b>PART Nr.:</b>	<b>02-10</b>
<b>MATERIAL:</b>	PET(G), CPE, ASA, ABS
<b>LAYER:</b>	0,15 - 0,25mm
<b>AMOUNT:</b>	1x
<b>SUPPORT:</b>	NO
<b>NOZZLE:</b>	0,4mm

NOTES:

Cut off the auxiliary areas marked in red.  
If you do not need the auxiliary areas, you can print an alternate part **02-10\_NO\_BASE**.

# Jagdpanzer 38(t)

## Printing guide



<b>PART Nr.:</b>	<b>02-11</b>
<b>MATERIAL:</b>	PET(G), CPE, ASA, ABS
<b>LAYER:</b>	0,15 - 0,25mm
<b>AMOUNT:</b>	1x
<b>SUPPORT:</b>	NO
<b>NOZZLE:</b>	0,4mm

NOTES:



<b>PART Nr.:</b>	<b>02-12</b>
<b>MATERIAL:</b>	PET(G), CPE, ASA, ABS
<b>LAYER:</b>	0,15 - 0,25mm
<b>AMOUNT:</b>	1x
<b>SUPPORT:</b>	NO
<b>NOZZLE:</b>	0,4mm

NOTES:

If you do not want to use bearings,  
you can print an alternate part  
**02-12\_alt.**

# Jagdpanzer 38(t)

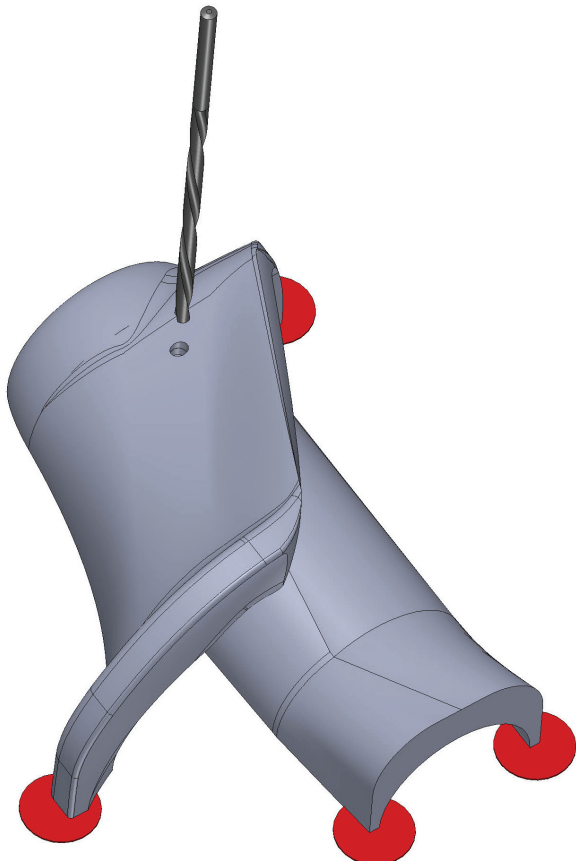
## Printing guide



<b>PART Nr.:</b>	<b>02-13A</b>
<b>MATERIAL:</b>	PET(G), CPE, ASA, ABS
<b>LAYER:</b>	0,10 - 0,20mm
<b>AMOUNT:</b>	1x
<b>SUPPORT:</b>	NO
<b>NOZZLE:</b>	0,4mm

**NOTES:**

Drill the screw hole with a 3-3.5mm drill bit.  
Cut off the auxiliary areas marked in red.  
If you do not need the auxiliary areas, you can print an alternate part **02-13A\_NO\_BASE**.



<b>PART Nr.:</b>	<b>02-13B</b>
<b>MATERIAL:</b>	PET(G), CPE, ASA, ABS
<b>LAYER:</b>	0,10 - 0,20mm
<b>AMOUNT:</b>	1x
<b>SUPPORT:</b>	NO
<b>NOZZLE:</b>	0,4mm

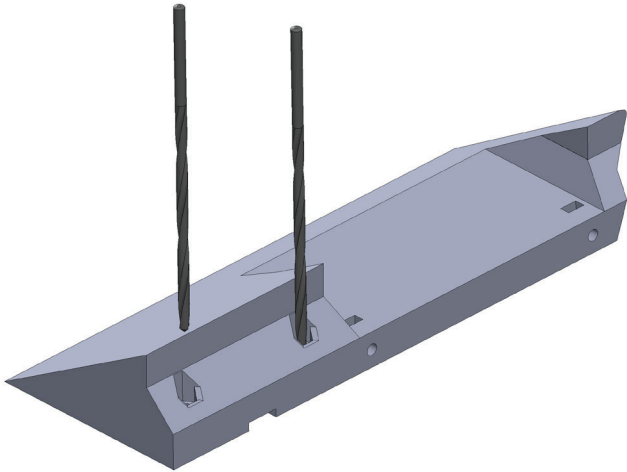
**NOTES:**

Drill the screw hole with a 3-3.5mm drill bit.  
Cut off the auxiliary areas marked in red.  
If you do not need the auxiliary areas, you can print an alternate part **02-13B\_NO\_BASE**.



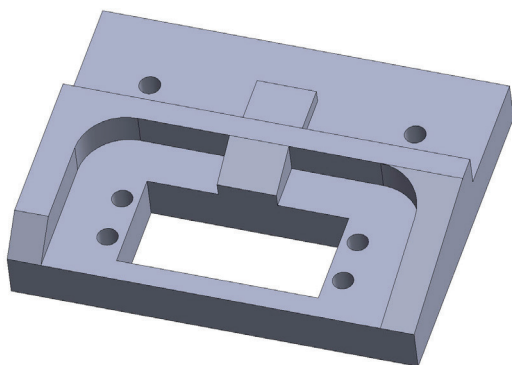
# Jagdpanzer 38(t)

## Printing guide



<b>PART Nr.:</b>	<b>02-14</b>
<b>MATERIAL:</b>	PET(G), CPE, ASA, ABS
<b>LAYER:</b>	0,15 - 0,25mm
<b>AMOUNT:</b>	1x
<b>SUPPORT:</b>	NO
<b>NOZZLE:</b>	0,4mm

<b>NOTES:</b>	Drill the screw holes with a 4-4.5mm drill bit.
---------------	---



<b>PART Nr.:</b>	<b>02-15</b>
<b>MATERIAL:</b>	PET(G), CPE, ASA, ABS
<b>LAYER:</b>	0,15 - 0,25mm
<b>AMOUNT:</b>	1x
<b>SUPPORT:</b>	NO
<b>NOZZLE:</b>	0,4mm

<b>NOTES:</b>	
---------------	--

# Jagdpanzer 38(t)

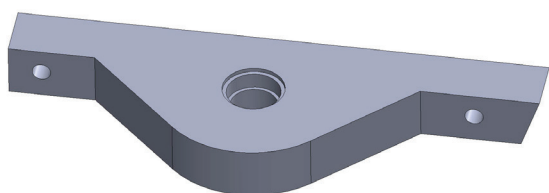
## Printing guide



<b>PART Nr.:</b>	<b>02-16</b>
<b>MATERIAL:</b>	PET(G), CPE, ASA, ABS
<b>LAYER:</b>	0,15 - 0,25mm
<b>AMOUNT:</b>	1x
<b>SUPPORT:</b>	NO
<b>NOZZLE:</b>	0,4mm

**NOTES:**

If you do not want to use bearings, you can print an alternate part **02-16\_alt**.



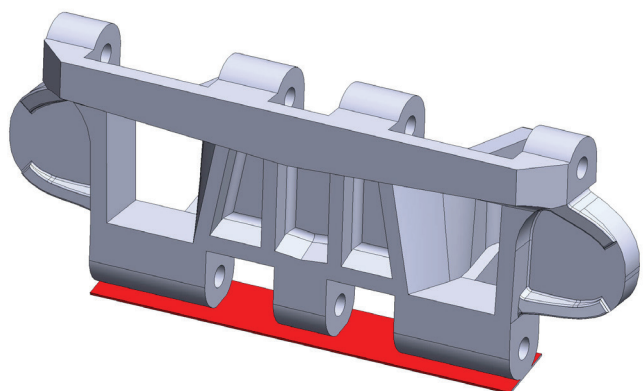
<b>PART Nr.:</b>	<b>02-17</b>
<b>MATERIAL:</b>	PET(G), CPE, ASA, ABS
<b>LAYER:</b>	0,15 - 0,25mm
<b>AMOUNT:</b>	1x
<b>SUPPORT:</b>	NO
<b>NOZZLE:</b>	0,4mm

**NOTES:**

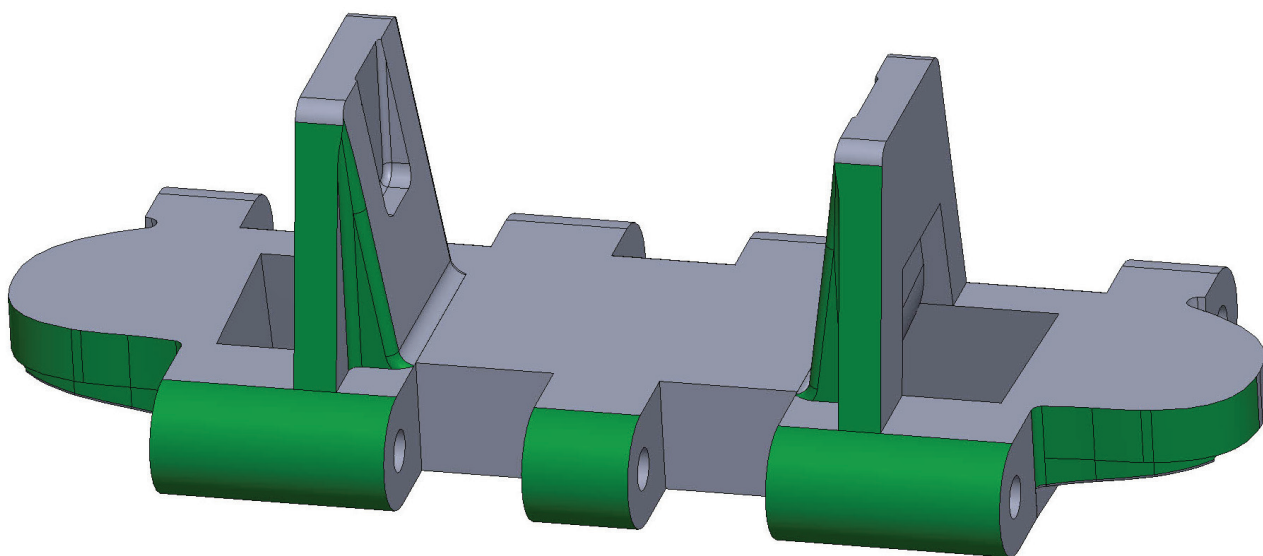


# Jagdpanzer 38(t)

## Printing guide



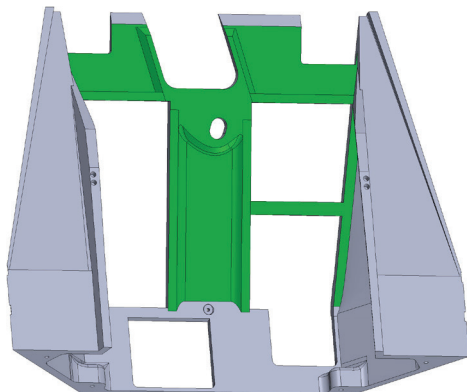
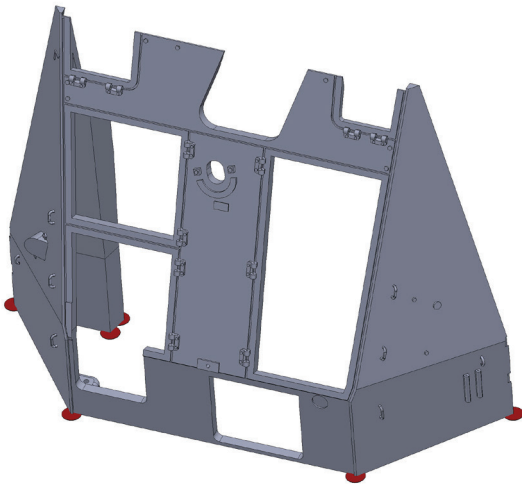
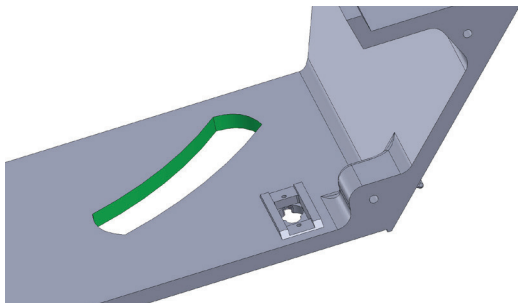
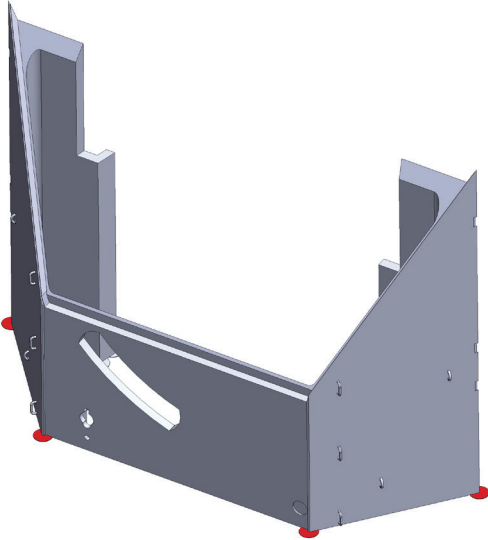
<b>PART Nr.:</b>	<b>03-01</b>
<b>MATERIAL:</b>	ASA, ABS, NYLON, POM
<b>LAYER:</b>	0,1mm - 0,2mm
<b>AMOUNT:</b>	202x
<b>SUPPORT:</b>	YES
<b>NOZZLE:</b>	0,4mm
<b>NOTES:</b>	<p>Cut off the auxiliary areas marked in red.</p> <p>Use the support only on the area marked in green !!!</p> <p>If necessary, drill holes with a 2mm drill bit.</p>





# Jagdpanzer 38(t)

## Printing guide



<b>PART Nr.:</b>	<b>04-01</b>
<b>MATERIAL:</b>	PET(G), CPE, ASA, ABS
<b>LAYER:</b>	0,10 - 0,25mm
<b>AMOUNT:</b>	1x
<b>SUPPORT:</b>	YES
<b>NOZZLE:</b>	0,4mm

**NOTES:**

Use the support only on the area marked in green !!!  
 Cut off the auxiliary areas marked in red.  
 If you do not need the auxiliary areas, you can print an alternate part **04-01\_NO\_BASE**.  
 If you don't want to print handles, you can use the alternate part **04-01\_NO\_HANDLES**.

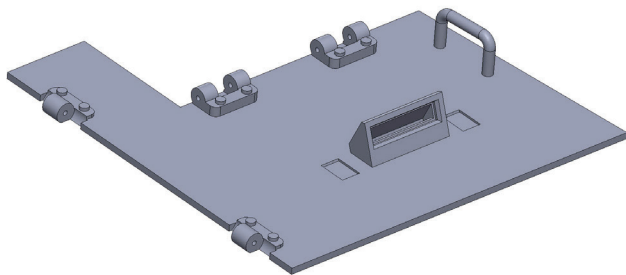
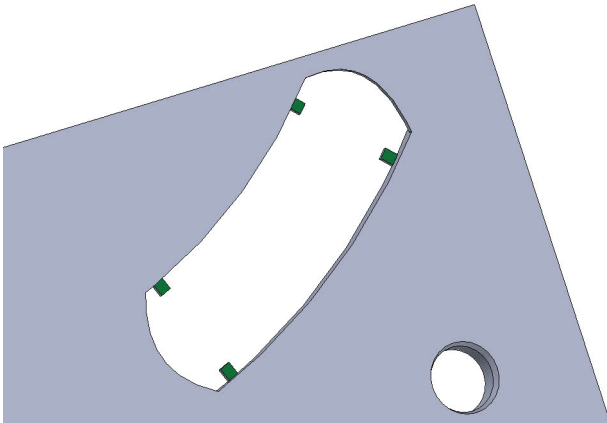
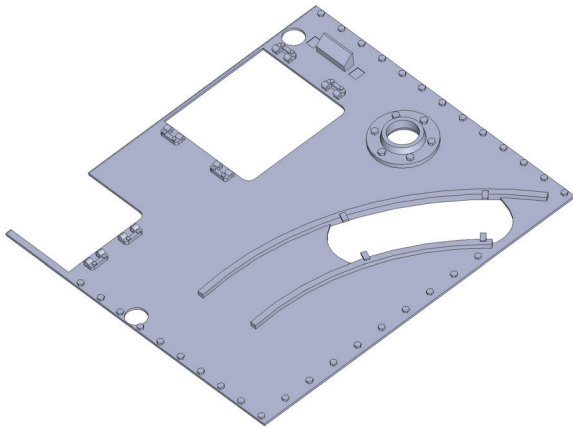
<b>PART Nr.:</b>	<b>04-02</b>
<b>MATERIAL:</b>	PET(G), CPE, ASA, ABS
<b>LAYER:</b>	0,10 - 0,25mm
<b>AMOUNT:</b>	1x
<b>SUPPORT:</b>	YES
<b>NOZZLE:</b>	0,4mm

**NOTES:**

Use the support only on the area marked in green !!!  
 Cut off the auxiliary areas marked in red.  
 If you do not need the auxiliary areas, you can print an alternate part **04-02\_NO\_BASE**.  
 If you don't want to print handles, you can use the alternate part **04-02\_NO\_HANDLES**.  
 If you don't want to print hinges, you can use the alternate part **04-02\_NO\_HINGES**.  
**Hinges can be printed separately.**  
 In this case, you have to print part **04-02\_ALT\_HINGE** (11x).

# Jagdpanzer 38(t)

## Printing guide

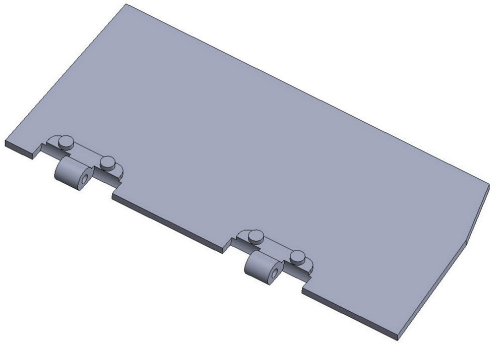


<b>PART Nr.:</b>	<b>04-03</b>
<b>MATERIAL:</b>	PET(G), CPE, ASA, ABS
<b>LAYER:</b>	0,10 - 0,20mm
<b>AMOUNT:</b>	1x
<b>SUPPORT:</b>	YES
<b>NOZZLE:</b>	0,4mm

<b>NOTES:</b>	Use the support only on 4 small areas marked in green !!!
---------------	---

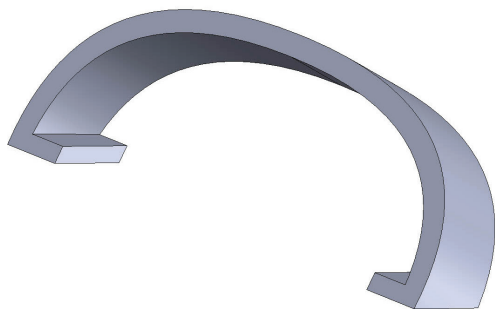
<b>PART Nr.:</b>	<b>04-04</b>
<b>MATERIAL:</b>	PET(G), CPE, ASA, ABS
<b>LAYER:</b>	0,10 - 0,20mm
<b>AMOUNT:</b>	1x
<b>SUPPORT:</b>	NO
<b>NOZZLE:</b>	0,4mm

<b>NOTES:</b>	If you don't want to print handles, you can use the alternate part <b>04-04_NO_HANDLES</b> . You can use alternative part <b>04-04_FULL_PERISCOPE</b> , if you dont want to make "glass" for the periscope.
---------------	--



<b>PART Nr.:</b>	<b>04-05</b>
<b>MATERIAL:</b>	PET(G), CPE, ASA, ABS
<b>LAYER:</b>	0,10 - 0,20mm
<b>AMOUNT:</b>	1x
<b>SUPPORT:</b>	NO
<b>NOZZLE:</b>	0,4mm

NOTES:



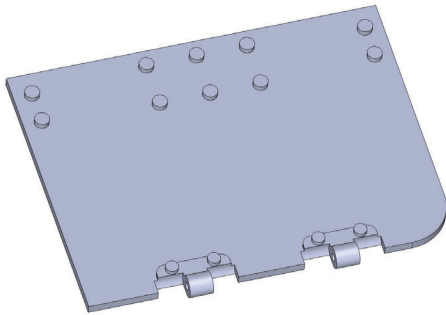
<b>PART Nr.:</b>	<b>04-06</b>
<b>MATERIAL:</b>	PET(G), CPE, ASA, ABS
<b>LAYER:</b>	0,10 - 0,20mm
<b>AMOUNT:</b>	1x
<b>SUPPORT:</b>	NO
<b>NOZZLE:</b>	0,4mm

NOTES:



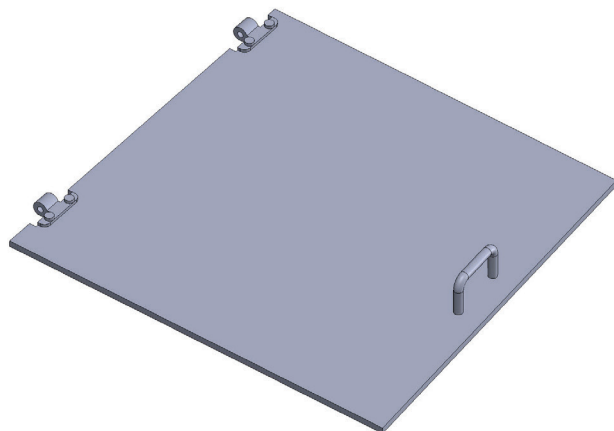
# Jagdpanzer 38(t)

## Printing guide



<b>PART Nr.:</b>	<b>04-07</b>
<b>MATERIAL:</b>	PET(G), CPE, ASA, ABS
<b>LAYER:</b>	0,10 - 0,20mm
<b>AMOUNT:</b>	1x
<b>SUPPORT:</b>	NO
<b>NOZZLE:</b>	0,4mm

NOTES:



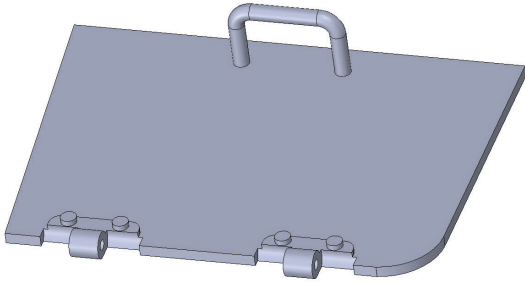
<b>PART Nr.:</b>	<b>04-08</b>
<b>MATERIAL:</b>	PET(G), CPE, ASA, ABS
<b>LAYER:</b>	0,10 - 0,20mm
<b>AMOUNT:</b>	1x
<b>SUPPORT:</b>	NO
<b>NOZZLE:</b>	0,4mm

NOTES:

If you don't want to print handles, you can use the alternate part **04-08\_NO\_HANDLES**.

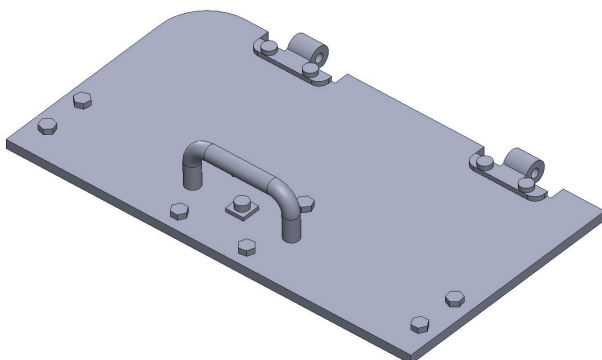
# Jagdpanzer 38(t)

## Printing guide



<b>PART Nr.:</b>	<b>04-09</b>
<b>MATERIAL:</b>	PET(G), CPE, ASA, ABS
<b>LAYER:</b>	0,10 - 0,20mm
<b>AMOUNT:</b>	1x
<b>SUPPORT:</b>	NO
<b>NOZZLE:</b>	0,4mm

**NOTES:** If you don't want to print handles, you can use the alternate part **04-09\_NO\_HANDLES**.

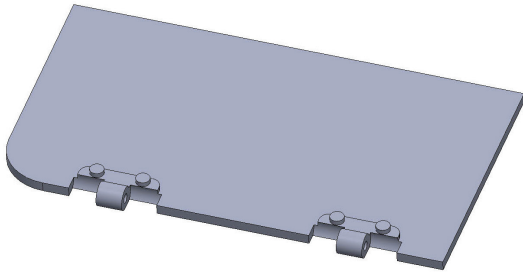


<b>PART Nr.:</b>	<b>04-10</b>
<b>MATERIAL:</b>	PET(G), CPE, ASA, ABS
<b>LAYER:</b>	0,10 - 0,20mm
<b>AMOUNT:</b>	1x
<b>SUPPORT:</b>	NO
<b>NOZZLE:</b>	0,4mm

**NOTES:** If you don't want to print handles, you can use the alternate part **04-10\_NO\_HANDLES**.

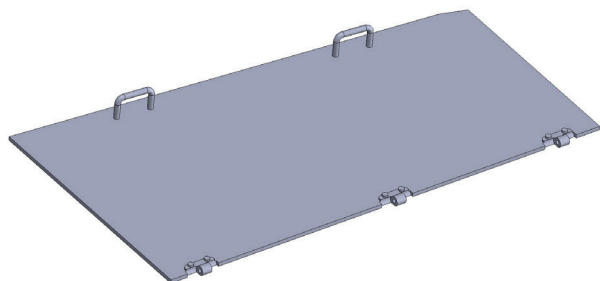
# Jagdpanzer 38(t)

## Printing guide



<b>PART Nr.:</b>	<b>04-11</b>
<b>MATERIAL:</b>	PET(G), CPE, ASA, ABS
<b>LAYER:</b>	0,10 - 0,20mm
<b>AMOUNT:</b>	1x
<b>SUPPORT:</b>	NO
<b>NOZZLE:</b>	0,4mm

NOTES:



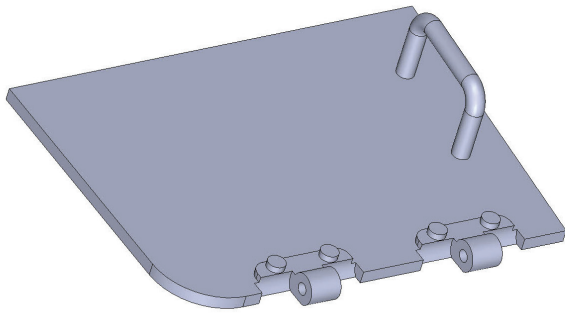
<b>PART Nr.:</b>	<b>04-12</b>
<b>MATERIAL:</b>	PET(G), CPE, ASA, ABS
<b>LAYER:</b>	0,10 - 0,20mm
<b>AMOUNT:</b>	1x
<b>SUPPORT:</b>	NO
<b>NOZZLE:</b>	0,4mm

NOTES:

If you don't want to print handles, you can use the alternate part **04-12\_NO\_HANDLES**.

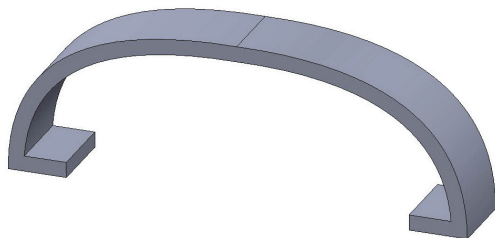
# Jagdpanzer 38(t)

## Printing guide



<b>PART Nr.:</b>	<b>04-13</b>
<b>MATERIAL:</b>	PET(G), CPE, ASA, ABS
<b>LAYER:</b>	0,10 - 0,20mm
<b>AMOUNT:</b>	1x
<b>SUPPORT:</b>	NO
<b>NOZZLE:</b>	0,4mm

**NOTES:** If you don't want to print handles, you can use the alternate part **04-13\_NO\_HANDLES**.

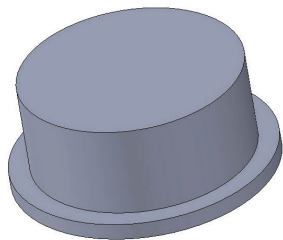


<b>PART Nr.:</b>	<b>04-14</b>
<b>MATERIAL:</b>	PET(G), CPE, ASA, ABS
<b>LAYER:</b>	0,10 - 0,20mm
<b>AMOUNT:</b>	1x
<b>SUPPORT:</b>	NO
<b>NOZZLE:</b>	0,4mm

**NOTES:**

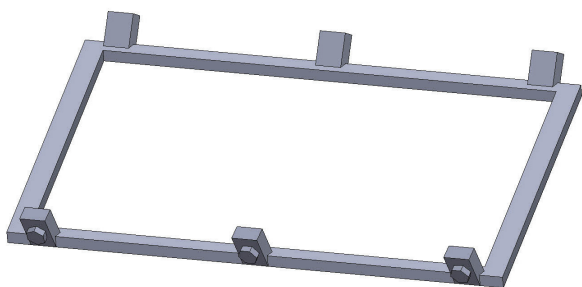
## Jagdpanzer 38(t)

### Printing guide



<b>PART Nr.:</b>	<b>04-15</b>
<b>MATERIAL:</b>	PET(G), CPE, ASA, ABS
<b>LAYER:</b>	0,10 - 0,25mm
<b>AMOUNT:</b>	2x
<b>SUPPORT:</b>	NO
<b>NOZZLE:</b>	0,4mm

**NOTES:** The part is identical to the part **01-19**. You will need a total of 3 pieces of this part

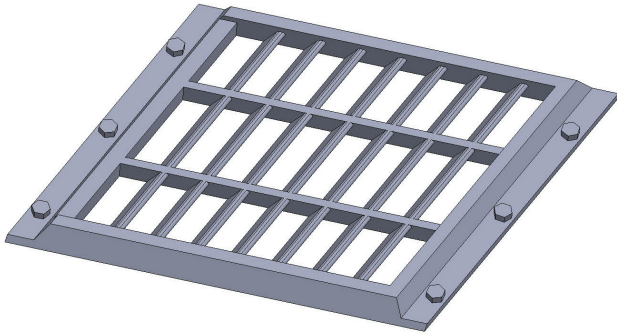


<b>PART Nr.:</b>	<b>04-16A</b>
<b>MATERIAL:</b>	PET(G), CPE, ASA, ABS
<b>LAYER:</b>	0,10 - 0,20mm
<b>AMOUNT:</b>	1x
<b>SUPPORT:</b>	NO
<b>NOZZLE:</b>	0,4mm

**NOTES:** If you don't want to print screws, you can use the alternate part **04-16A\_alt**. You can use this alternate part with M1,6 hexagon screws.

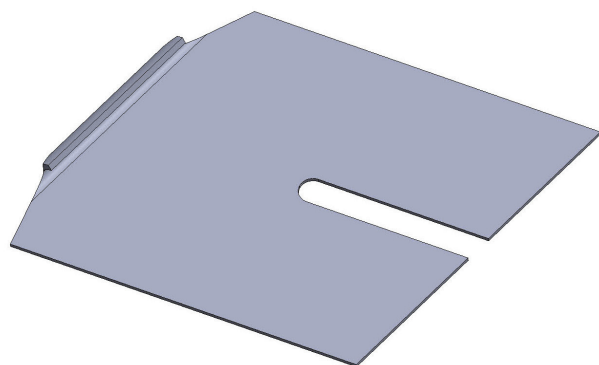
# Jagdpanzer 38(t)

## Printing guide



<b>PART Nr.:</b>	<b>04-16B</b>
<b>MATERIAL:</b>	PET(G), CPE, ASA, ABS
<b>LAYER:</b>	0,10 - 0,20mm
<b>AMOUNT:</b>	1x
<b>SUPPORT:</b>	NO
<b>NOZZLE:</b>	0,4mm

NOTES:

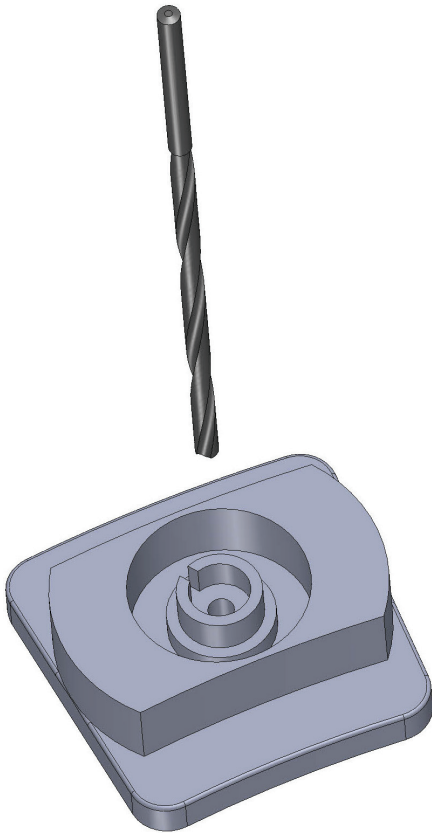


<b>PART Nr.:</b>	<b>04-16C</b>
<b>MATERIAL:</b>	PET(G), CPE, ASA, ABS
<b>LAYER:</b>	0,10 - 0,20mm
<b>AMOUNT:</b>	1x
<b>SUPPORT:</b>	NO
<b>NOZZLE:</b>	0,4mm

NOTES:

# Jagdpanzer 38(t)

## Printing guide



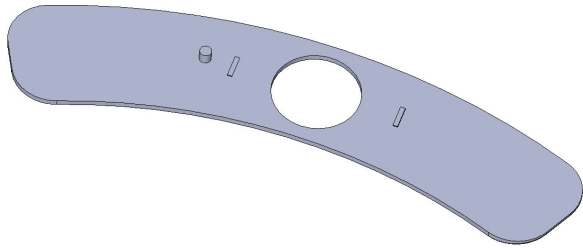
<b>PART Nr.:</b>	<b>04-17A</b>
<b>MATERIAL:</b>	PET(G), CPE, ASA, ABS
<b>LAYER:</b>	0,10 - 0,20mm
<b>AMOUNT:</b>	1x
<b>SUPPORT:</b>	NO
<b>NOZZLE:</b>	0,4mm
<b>NOTES:</b>	Drill the screw hole with a 3-3.5mm drill bit.



<b>PART Nr.:</b>	<b>04-17B</b>
<b>MATERIAL:</b>	PET(G), CPE, ASA, ABS
<b>LAYER:</b>	0,10 - 0,20mm
<b>AMOUNT:</b>	1x
<b>SUPPORT:</b>	NO
<b>NOZZLE:</b>	0,4mm
<b>NOTES:</b>	You can use alternative part <b>04-17B_FULL_PERISCOPE</b> , if you dont want to make "glass" for the periscope.

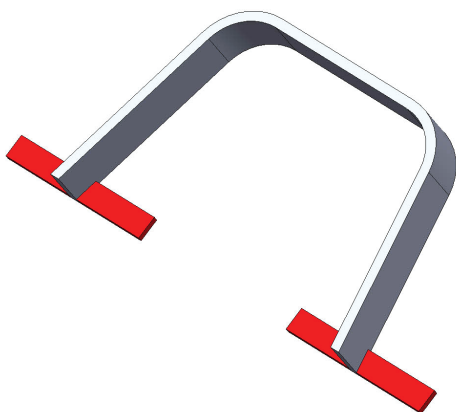
# Jagdpanzer 38(t)

## Printing guide



<b>PART Nr.:</b>	<b>04-17C</b>
<b>MATERIAL:</b>	PET(G), CPE, ASA, ABS
<b>LAYER:</b>	0,10 - 0,20mm
<b>AMOUNT:</b>	1x
<b>SUPPORT:</b>	NO
<b>NOZZLE:</b>	0,4mm

NOTES:



<b>PART Nr.:</b>	<b>04-17D</b>
<b>MATERIAL:</b>	PET(G), CPE, ASA, ABS
<b>LAYER:</b>	0,10 - 0,20mm
<b>AMOUNT:</b>	1x
<b>SUPPORT:</b>	NO
<b>NOZZLE:</b>	0,4mm

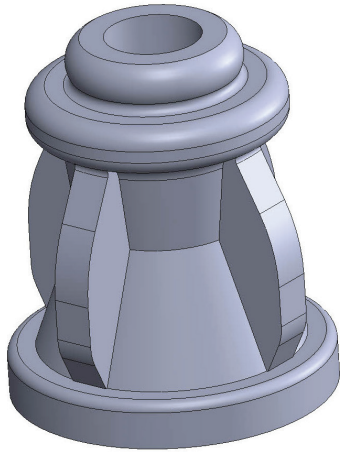
NOTES:

Cut off the auxiliary areas marked in red.  
If you do not need the auxiliary areas, you can print an alternate part **04-017D\_NO\_BASE**.



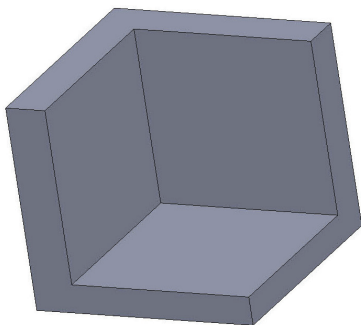
# Jagdpanzer 38(t)

## Printing guide



<b>PART Nr.:</b>	<b>04-18</b>
<b>MATERIAL:</b>	PET(G), CPE, ASA, ABS
<b>LAYER:</b>	0,10 - 0,20mm
<b>AMOUNT:</b>	1x
<b>SUPPORT:</b>	NO
<b>NOZZLE:</b>	0,4mm

**NOTES:** You can use alternative part **04-18\_alt** with bigger hole diameter - 4mm.

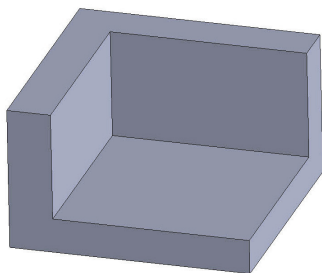


<b>PART Nr.:</b>	<b>04-19</b>
<b>MATERIAL:</b>	PET(G), CPE, ASA, ABS
<b>LAYER:</b>	0,10 - 0,25mm
<b>AMOUNT:</b>	1x
<b>SUPPORT:</b>	NO
<b>NOZZLE:</b>	0,4mm

**NOTES:**

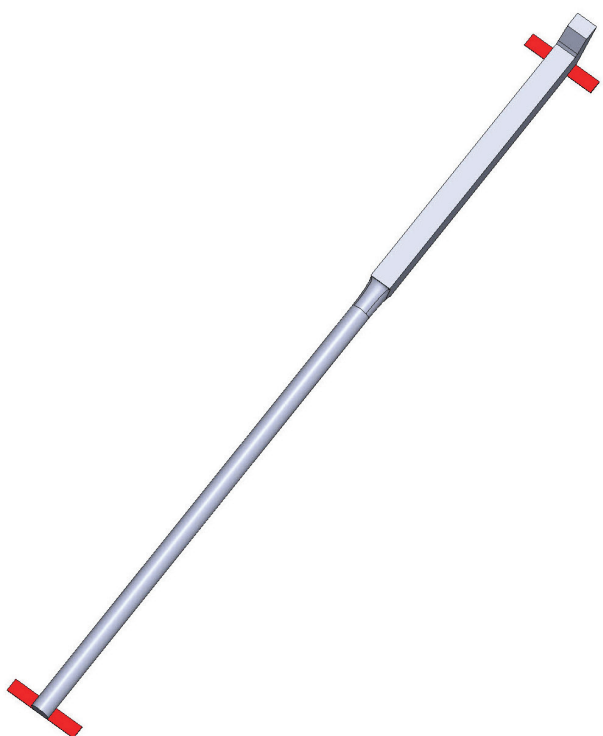
# Jagdpanzer 38(t)

## Printing guide



<b>PART Nr.:</b>	<b>04-20</b>
<b>MATERIAL:</b>	PET(G), CPE, ASA, ABS
<b>LAYER:</b>	0,10 - 0,25mm
<b>AMOUNT:</b>	1x
<b>SUPPORT:</b>	NO
<b>NOZZLE:</b>	0,4mm

<b>NOTES:</b>	
---------------	--

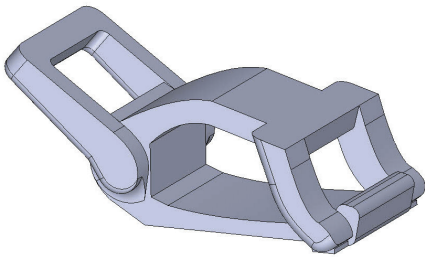


<b>PART Nr.:</b>	<b>04-21</b>
<b>MATERIAL:</b>	PET(G), CPE, ASA, ABS
<b>LAYER:</b>	0,10 - 0,20mm
<b>AMOUNT:</b>	1x
<b>SUPPORT:</b>	NO
<b>NOZZLE:</b>	0,4mm

<b>NOTES:</b>	<p>Cut off the auxiliary areas marked in red.</p> <p>If you do not need the auxiliary areas, you can print an alternate part <b>04-21_NO_BASE</b>.</p>
---------------	--

# Jagdpanzer 38(t)

## Printing guide



<b>PART Nr.:</b>	<b>04-22</b>
<b>MATERIAL:</b>	PET(G), CPE, ASA, ABS
<b>LAYER:</b>	0,10 - 0,20mm
<b>AMOUNT:</b>	2x
<b>SUPPORT:</b>	NO
<b>NOZZLE:</b>	0,3 - 0,4mm

**NOTES:**  
The part is identical to the part **01-22**.  
You will need a total of 5 pieces of this part

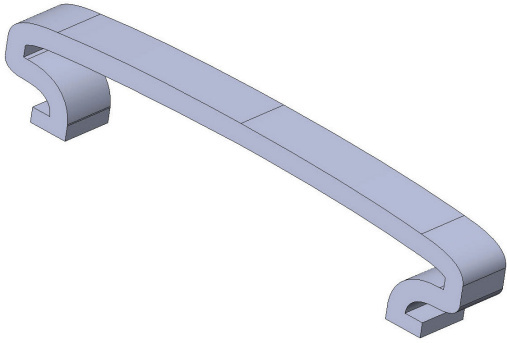


<b>PART Nr.:</b>	<b>04-23</b>
<b>MATERIAL:</b>	PET(G), CPE, ASA, ABS
<b>LAYER:</b>	0,10 - 0,20mm
<b>AMOUNT:</b>	1x
<b>SUPPORT:</b>	NO
<b>NOZZLE:</b>	0,4mm

**NOTES:**  
Cut off the auxiliary areas marked in red.  
If you do not need the auxiliary areas, you can print an alternate part **04-23\_NO\_BASE**.

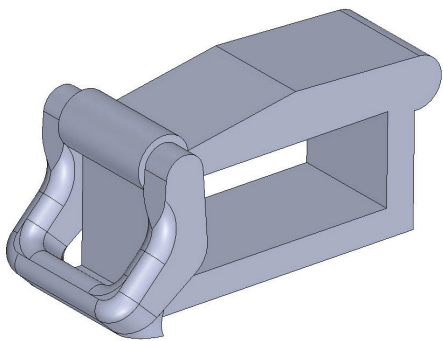
# Jagdpanzer 38(t)

## Printing guide



<b>PART Nr.:</b>	<b>04-24</b>
<b>MATERIAL:</b>	PET(G), CPE, ASA, ABS
<b>LAYER:</b>	0,10 - 0,20mm
<b>AMOUNT:</b>	1x
<b>SUPPORT:</b>	NO
<b>NOZZLE:</b>	0,4mm

NOTES:

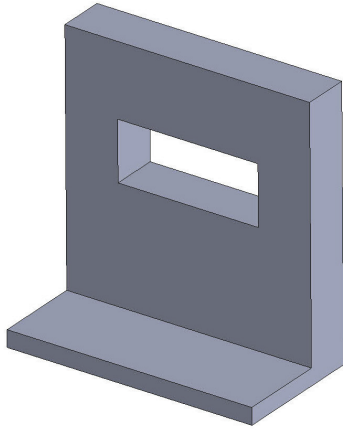


<b>PART Nr.:</b>	<b>04-25</b>
<b>MATERIAL:</b>	PET(G), CPE, ASA, ABS
<b>LAYER:</b>	0,10 - 0,20mm
<b>AMOUNT:</b>	1x
<b>SUPPORT:</b>	NO
<b>NOZZLE:</b>	0,3 - 0,4mm

NOTES:

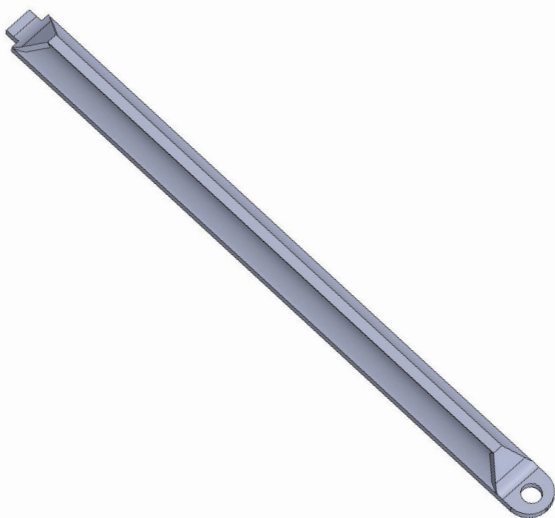
# Jagdpanzer 38(t)

## Printing guide



<b>PART Nr.:</b>	<b>04-26</b>
<b>MATERIAL:</b>	PET(G), CPE, ASA, ABS
<b>LAYER:</b>	0,10 - 0,25mm
<b>AMOUNT:</b>	1x
<b>SUPPORT:</b>	NO
<b>NOZZLE:</b>	0,4mm

<b>NOTES:</b>	
---------------	--

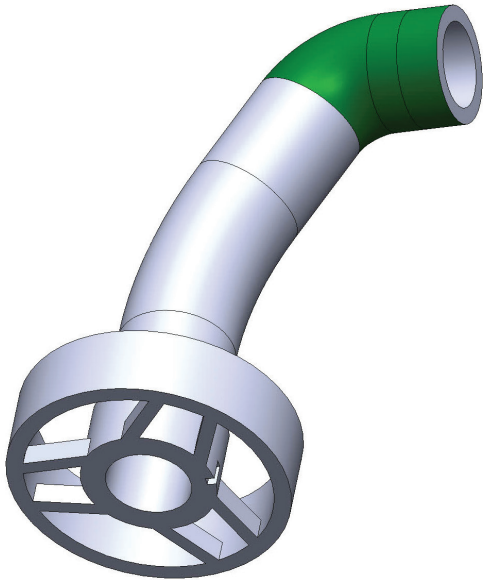


<b>PART Nr.:</b>	<b>04-27</b>
<b>MATERIAL:</b>	PET(G), CPE, ASA, ABS
<b>LAYER:</b>	0,10 - 0,20mm
<b>AMOUNT:</b>	1x
<b>SUPPORT:</b>	NO
<b>NOZZLE:</b>	0,4mm

<b>NOTES:</b>	
---------------	--

## Jagdpanzer 38(t)

### Printing guide



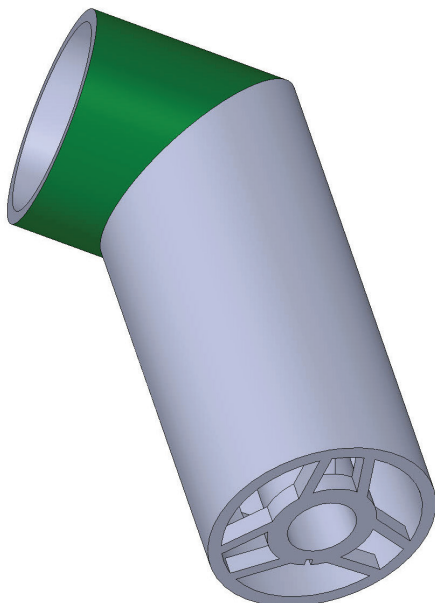
<b>PART Nr.:</b>	<b>04-28</b>
<b>MATERIAL:</b>	PET(G), CPE, ASA, ABS
<b>LAYER:</b>	0,10 - 0,20mm
<b>AMOUNT:</b>	1x
<b>SUPPORT:</b>	YES
<b>NOZZLE:</b>	0,3 - 0,4mm

**NOTES:**

**Use the support only on the area marked in green!!!**  
Do not use supports on the interior surfaces of the part.

It is recommended to print the part from ASA or ABS for the possibility of very strong bonding using acetone.

You can use part **04-28\_DLP** for DLP/SLA/LCD printer.



<b>PART Nr.:</b>	<b>04-29</b>
<b>MATERIAL:</b>	PET(G), CPE, ASA, ABS
<b>LAYER:</b>	0,10 - 0,20mm
<b>AMOUNT:</b>	1x
<b>SUPPORT:</b>	YES
<b>NOZZLE:</b>	0,3 - 0,4mm

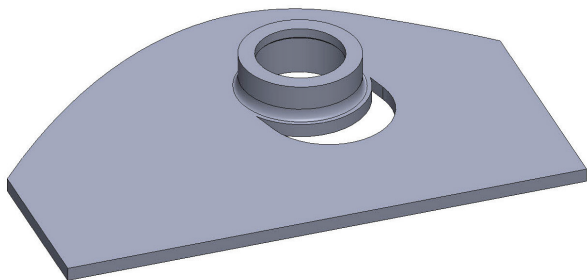
**NOTES:**

**Use the support only on the area marked in green!!!**  
Do not use supports on the interior surfaces of the part.

It is recommended to print the part from ASA or ABS for the possibility of very strong bonding using acetone.

# Jagdpanzer 38(t)

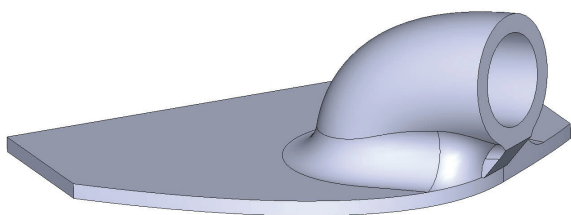
## Printing guide



<b>PART Nr.:</b>	<b>04-30</b>
<b>MATERIAL:</b>	PET(G), CPE, ASA, ABS
<b>LAYER:</b>	0,15 - 0,25mm
<b>AMOUNT:</b>	1x
<b>SUPPORT:</b>	NO
<b>NOZZLE:</b>	0,4mm

**NOTES:**

It is recommended to print the part from ASA or ABS for the possibility of very strong bonding using acetone.



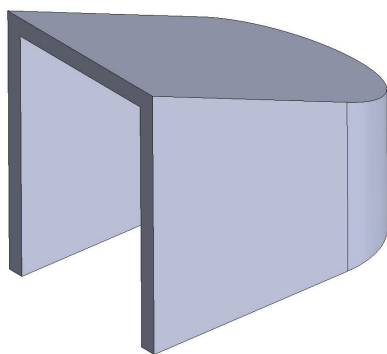
<b>PART Nr.:</b>	<b>04-31</b>
<b>MATERIAL:</b>	PET(G), CPE, ASA, ABS
<b>LAYER:</b>	0,15 - 0,25mm
<b>AMOUNT:</b>	1x
<b>SUPPORT:</b>	NO
<b>NOZZLE:</b>	0,4mm

**NOTES:**

It is recommended to print the part from ASA or ABS for the possibility of very strong bonding using acetone.

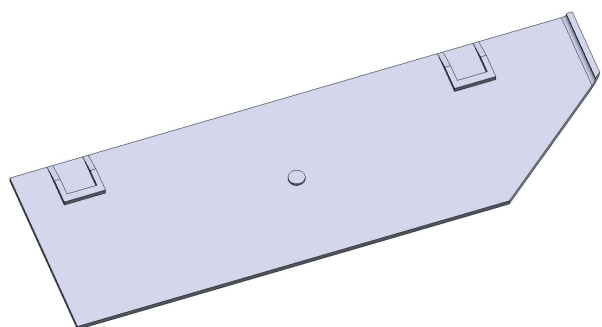
## Jagdpanzer 38(t)

### Printing guide



<b>PART Nr.:</b>	<b>04-32</b>
<b>MATERIAL:</b>	PET(G), CPE, ASA, ABS
<b>LAYER:</b>	0,10 - 0,25mm
<b>AMOUNT:</b>	1x
<b>SUPPORT:</b>	NO
<b>NOZZLE:</b>	0,4mm

NOTES:



<b>PART Nr.:</b>	<b>04-33</b>
<b>MATERIAL:</b>	PET(G), CPE, ASA, ABS
<b>LAYER:</b>	0,15 - 0,25mm
<b>AMOUNT:</b>	1x
<b>SUPPORT:</b>	NO
<b>NOZZLE:</b>	0,4mm

NOTES:

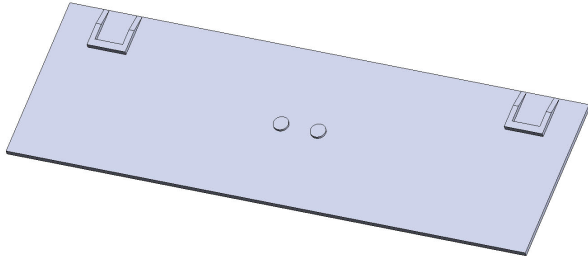
It is recommended to print the part from ASA or ABS for the possibility of very strong bonding using acetone.

If you want version with screws, you can use the alternate part **04-33\_alt**. You can use this part with M1,6 hexagon screws.



## Jagdpanzer 38(t)

### Printing guide

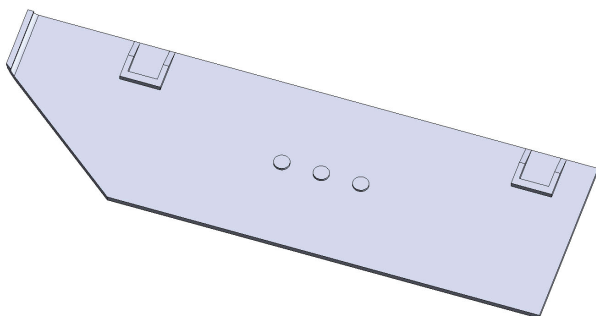


<b>PART Nr.:</b>	<b>04-34</b>
<b>MATERIAL:</b>	PET(G), CPE, ASA, ABS
<b>LAYER:</b>	0,15 - 0,25mm
<b>AMOUNT:</b>	1x
<b>SUPPORT:</b>	NO
<b>NOZZLE:</b>	0,4mm

**NOTES:**

It is recommended to print the part from ASA or ABS for the possibility of very strong bonding using acetone.

If you want version with screws, you can use the alternate part **04-34\_alt**. You can use this part with M1,6 hexagon screws.



<b>PART Nr.:</b>	<b>04-35</b>
<b>MATERIAL:</b>	PET(G), CPE, ASA, ABS
<b>LAYER:</b>	0,15 - 0,25mm
<b>AMOUNT:</b>	1x
<b>SUPPORT:</b>	NO
<b>NOZZLE:</b>	0,4mm

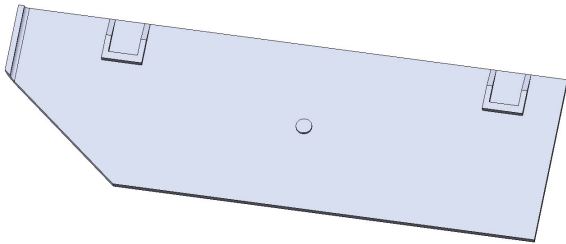
**NOTES:**

It is recommended to print the part from ASA or ABS for the possibility of very strong bonding using acetone.

If you want version with screws, you can use the alternate part **04-35\_alt**. You can use this part with M1,6 hexagon screws.

# Jagdpanzer 38(t)

## Printing guide

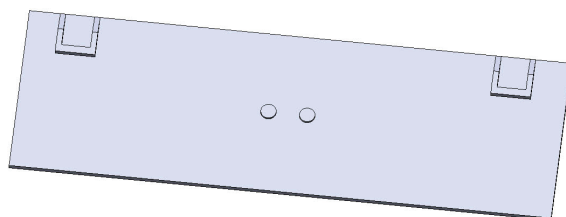


<b>PART Nr.:</b>	<b>04-36</b>
<b>MATERIAL:</b>	PET(G), CPE, ASA, ABS
<b>LAYER:</b>	0,15 - 0,25mm
<b>AMOUNT:</b>	1x
<b>SUPPORT:</b>	NO
<b>NOZZLE:</b>	0,4mm

**NOTES:**

It is recommended to print the part from ASA or ABS for the possibility of very strong bonding using acetone.

If you want version with screws, you can use the alternate part **04-36\_alt**.  
You can use this part with M1,6 hexagon screws.



<b>PART Nr.:</b>	<b>04-37</b>
<b>MATERIAL:</b>	PET(G), CPE, ASA, ABS
<b>LAYER:</b>	0,15 - 0,25mm
<b>AMOUNT:</b>	1x
<b>SUPPORT:</b>	NO
<b>NOZZLE:</b>	0,4mm

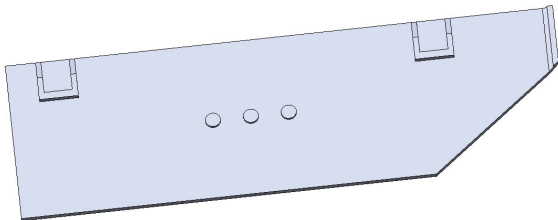
**NOTES:**

It is recommended to print the part from ASA or ABS for the possibility of very strong bonding using acetone.

If you want version with screws, you can use the alternate part **04-37\_alt**.  
You can use this part with M1,6 hexagon screws.

# Jagdpanzer 38(t)

## Printing guide

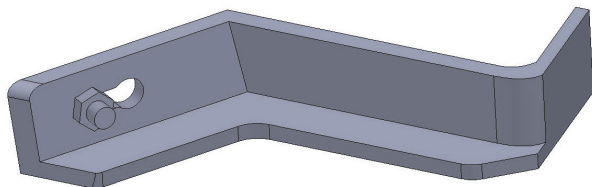


<b>PART Nr.:</b>	<b>04-38</b>
<b>MATERIAL:</b>	PET(G), CPE, ASA, ABS
<b>LAYER:</b>	0,15 - 0,25mm
<b>AMOUNT:</b>	1x
<b>SUPPORT:</b>	NO
<b>NOZZLE:</b>	0,4mm

**NOTES:**

It is recommended to print the part from ASA or ABS for the possibility of very strong bonding using acetone.

If you want version with screws, you can use the alternate part **04-38\_alt**.  
You can use this part with M1,6 hexagon screws.



<b>PART Nr.:</b>	<b>04-39</b>
<b>MATERIAL:</b>	PET(G), CPE, ASA, ABS
<b>LAYER:</b>	0,10 - 0,20mm
<b>AMOUNT:</b>	1x
<b>SUPPORT:</b>	NO
<b>NOZZLE:</b>	0,3 - 0,4mm

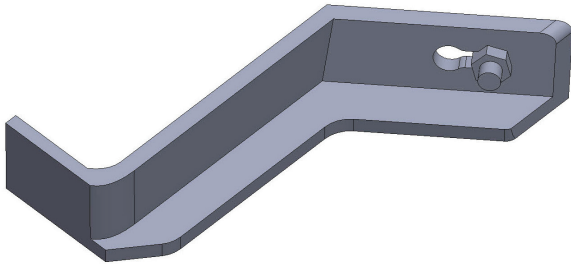
**NOTES:**

It is recommended to print the part from ASA or ABS for the possibility of very strong bonding using acetone.

If you want version with screws, you can use the alternate part **04-39\_alt**.  
You can use this part with M1,6 hexagon screws.

## Jagdpanzer 38(t)

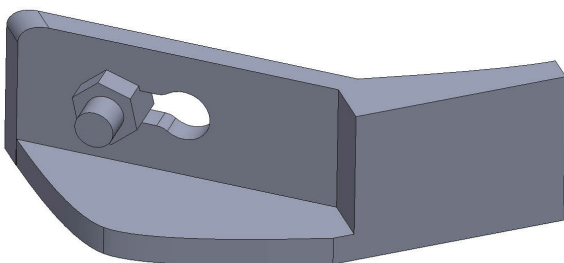
### Printing guide



<b>PART Nr.:</b>	<b>04-40</b>
<b>MATERIAL:</b>	PET(G), CPE, ASA, ABS
<b>LAYER:</b>	0,10 - 0,20mm
<b>AMOUNT:</b>	1x
<b>SUPPORT:</b>	NO
<b>NOZZLE:</b>	0,3 - 0,4mm

**NOTES:** It is recommended to print the part from ASA or ABS for the possibility of very strong bonding using acetone.

If you want version with screws, you can use the alternate part **04-40\_alt**. You can use this part with M1,6 hexagon screws.



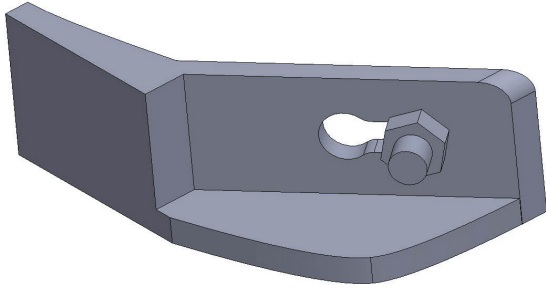
<b>PART Nr.:</b>	<b>04-41</b>
<b>MATERIAL:</b>	PET(G), CPE, ASA, ABS
<b>LAYER:</b>	0,10 - 0,20mm
<b>AMOUNT:</b>	5x
<b>SUPPORT:</b>	NO
<b>NOZZLE:</b>	0,3 - 0,4mm

**NOTES:** It is recommended to print the part from ASA or ABS for the possibility of very strong bonding using acetone.

If you want version with screws, you can use the alternate part **04-41\_alt**. You can use this part with M1,6 hexagon screws.

# Jagdpanzer 38(t)

## Printing guide

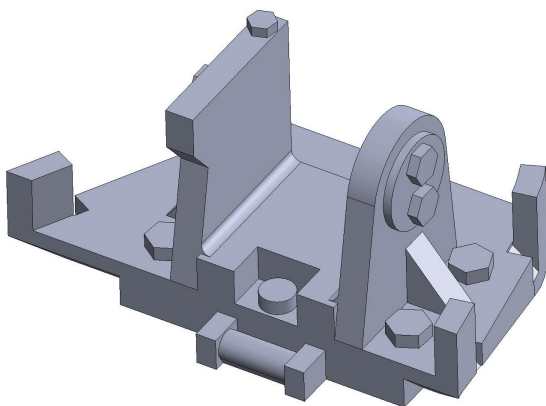


<b>PART Nr.:</b>	<b>04-42</b>
<b>MATERIAL:</b>	PET(G), CPE, ASA, ABS
<b>LAYER:</b>	0,10 - 0,20mm
<b>AMOUNT:</b>	5x
<b>SUPPORT:</b>	NO
<b>NOZZLE:</b>	0,3 - 0,4mm

**NOTES:**

It is recommended to print the part from ASA or ABS for the possibility of very strong bonding using acetone.

If you want version with screws, you can use the alternate part **04-42\_alt**.  
You can use this part with M1,6 hexagon screws.

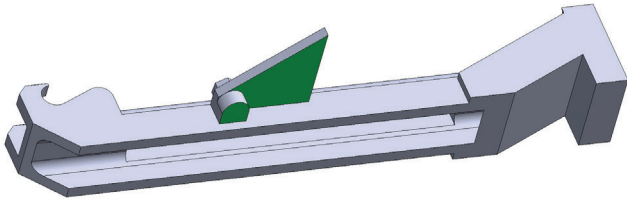


<b>PART Nr.:</b>	<b>04-43</b>
<b>MATERIAL:</b>	PET(G), CPE, ASA, ABS
<b>LAYER:</b>	0,10 - 0,20mm
<b>AMOUNT:</b>	1x
<b>SUPPORT:</b>	NO
<b>NOZZLE:</b>	0,3 - 0,4mm

**NOTES:**

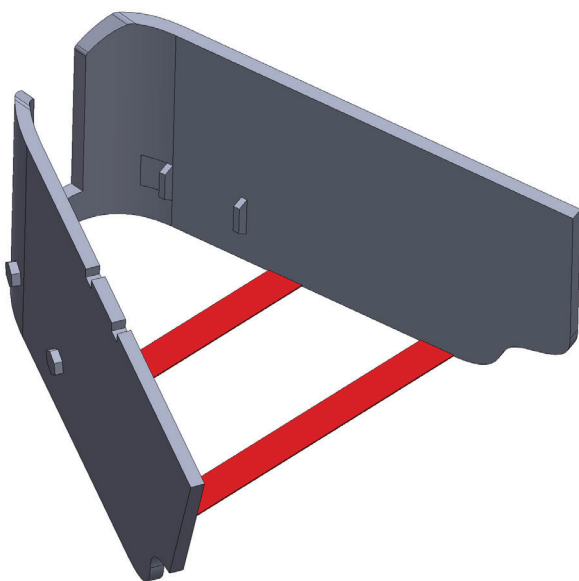
# Jagdpanzer 38(t)

## Printing guide



<b>PART Nr.:</b>	<b>04-44</b>
<b>MATERIAL:</b>	PET(G), CPE, ASA, ABS
<b>LAYER:</b>	0,10 - 0,20mm
<b>AMOUNT:</b>	1x
<b>SUPPORT:</b>	YES
<b>NOZZLE:</b>	0,3 - 0,4mm

**NOTES:** Apply the support to areas marked in green.

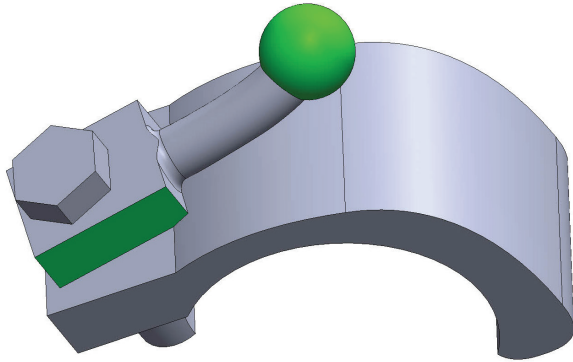


<b>PART Nr.:</b>	<b>04-45</b>
<b>MATERIAL:</b>	PET(G), CPE, ASA, ABS
<b>LAYER:</b>	0,10 - 0,20mm
<b>AMOUNT:</b>	1x
<b>SUPPORT:</b>	NO
<b>NOZZLE:</b>	0,3 - 0,4mm

**NOTES:** Cut off the auxiliary areas marked in red.  
If you do not need the auxiliary areas, you can print an alternate part **04-45\_NO\_BASE**.

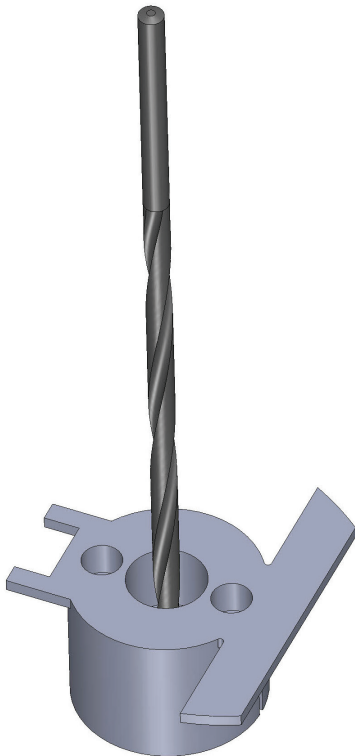
# Jagdpanzer 38(t)

## Printing guide



<b>PART Nr.:</b>	<b>04-46</b>
<b>MATERIAL:</b>	PET(G), CPE, ASA, ABS
<b>LAYER:</b>	0,10 - 0,20mm
<b>AMOUNT:</b>	1x
<b>SUPPORT:</b>	YES
<b>NOZZLE:</b>	0,3 - 0,4mm

**NOTES:** Apply the support to areas marked in green.



<b>PART Nr.:</b>	<b>04-47</b>
<b>MATERIAL:</b>	PET(G), CPE, ASA, ABS
<b>LAYER:</b>	0,10 - 0,25mm
<b>AMOUNT:</b>	1x
<b>SUPPORT:</b>	NO
<b>NOZZLE:</b>	0,3 - 0,4mm

**NOTES:** Drill the screw hole with a 2-2.5mm drill bit.

# Jagdpanzer 38(t)

## Printing guide



<b>PART Nr.:</b>	<b>MG34_1A</b>
<b>MATERIAL:</b>	PET(G), CPE, ASA, ABS
<b>LAYER:</b>	0,10 - 0,20mm
<b>AMOUNT:</b>	1x
<b>SUPPORT:</b>	NO
<b>NOZZLE:</b>	0,3mm

**NOTES:**

You can use part **MG34\_DLP\_v1** or **MG34\_DLP\_v2** for DLP/SLA/LCD printer.



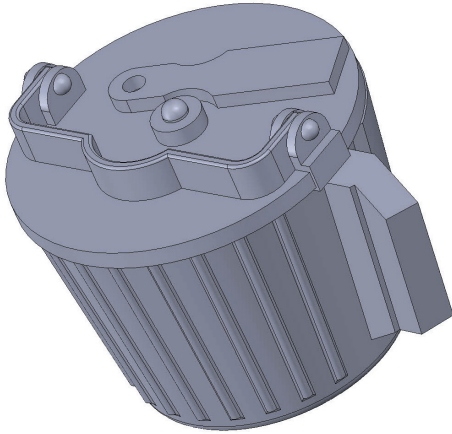
<b>PART Nr.:</b>	<b>MG34_1B</b>
<b>MATERIAL:</b>	PET(G), CPE, ASA, ABS
<b>LAYER:</b>	0,10 - 0,25mm
<b>AMOUNT:</b>	1x
<b>SUPPORT:</b>	NO
<b>NOZZLE:</b>	0,3mm

**NOTES:**



# Jagdpanzer 38(t)

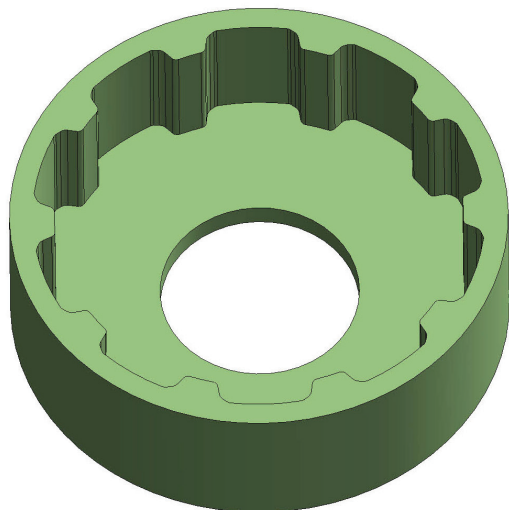
## Printing guide



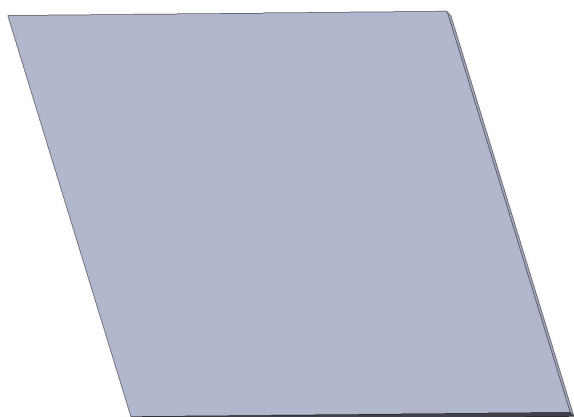
<b>PART Nr.:</b>	<b>MG34_2</b>
<b>MATERIAL:</b>	PET(G), CPE, ASA, ABS
<b>LAYER:</b>	0,10 - 0,20mm
<b>AMOUNT:</b>	1x
<b>SUPPORT:</b>	NO
<b>NOZZLE:</b>	0,3mm
<b>NOTES:</b>	

# Jagdpanzer 38(t)

## Printing guide



<b>PART Nr.:</b>	<b>JIG</b>
<b>MATERIAL:</b>	PET(G), CPE, ASA, ABS
<b>LAYER:</b>	0,2 - 0,3mm
<b>AMOUNT:</b>	1x
<b>SUPPORT:</b>	NO
<b>NOZZLE:</b>	0,4mm
<b>NOTES:</b>	Use for comfortable and accurate assembly of the wheel axle.



<b>PART Nr.:</b>	<b>NET_TEMPLATE</b>
<b>MATERIAL:</b>	PET(G), CPE, ASA, ABS
<b>LAYER:</b>	0,2 - 0,3mm
<b>AMOUNT:</b>	1x
<b>SUPPORT:</b>	NO
<b>NOZZLE:</b>	0,4mm
<b>NOTES:</b>	You can print this optional part for easier cutting of the mesh for the 04-16 assembly.

